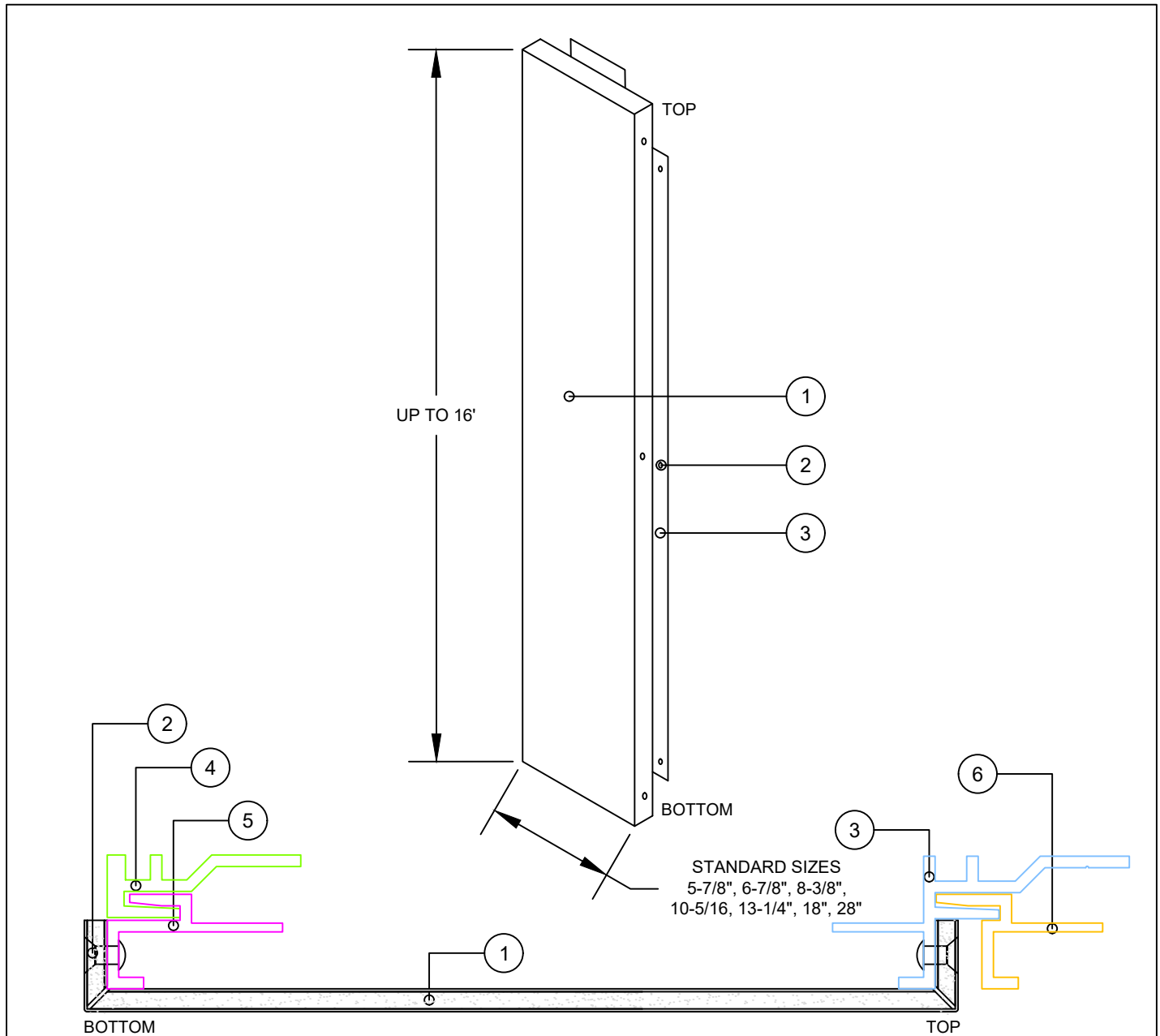


ACS COMPOSITE SYSTEMS INC.

ACP SYSTEMS - 2

VERTICAL



LIST OF MATERIALS

- | | |
|-----------------------------------|------------------------------|
| 1. 4MM STACBOND A2 or FR CORE ACM | 4. S2 - STARTER (ALUMINUM) |
| 2. #8 S.S. RIVET @ 16" O.C. | 5. S2 - BASE RAIL (ALUMINUM) |
| 3. S2 - F RAIL (ALUMINUM) | 6. S2 - M RAIL (ALUMINUM) |

DWG BY KAW	PROJECT NAME	PAGE DESCRIPTION
DATE SUBMITTED SEPTEMBER 2021		
REVISIONS		
NO. _____ DATE _____		
NO. _____ DATE _____		
NO. _____ DATE _____		
NO. _____ DATE _____		

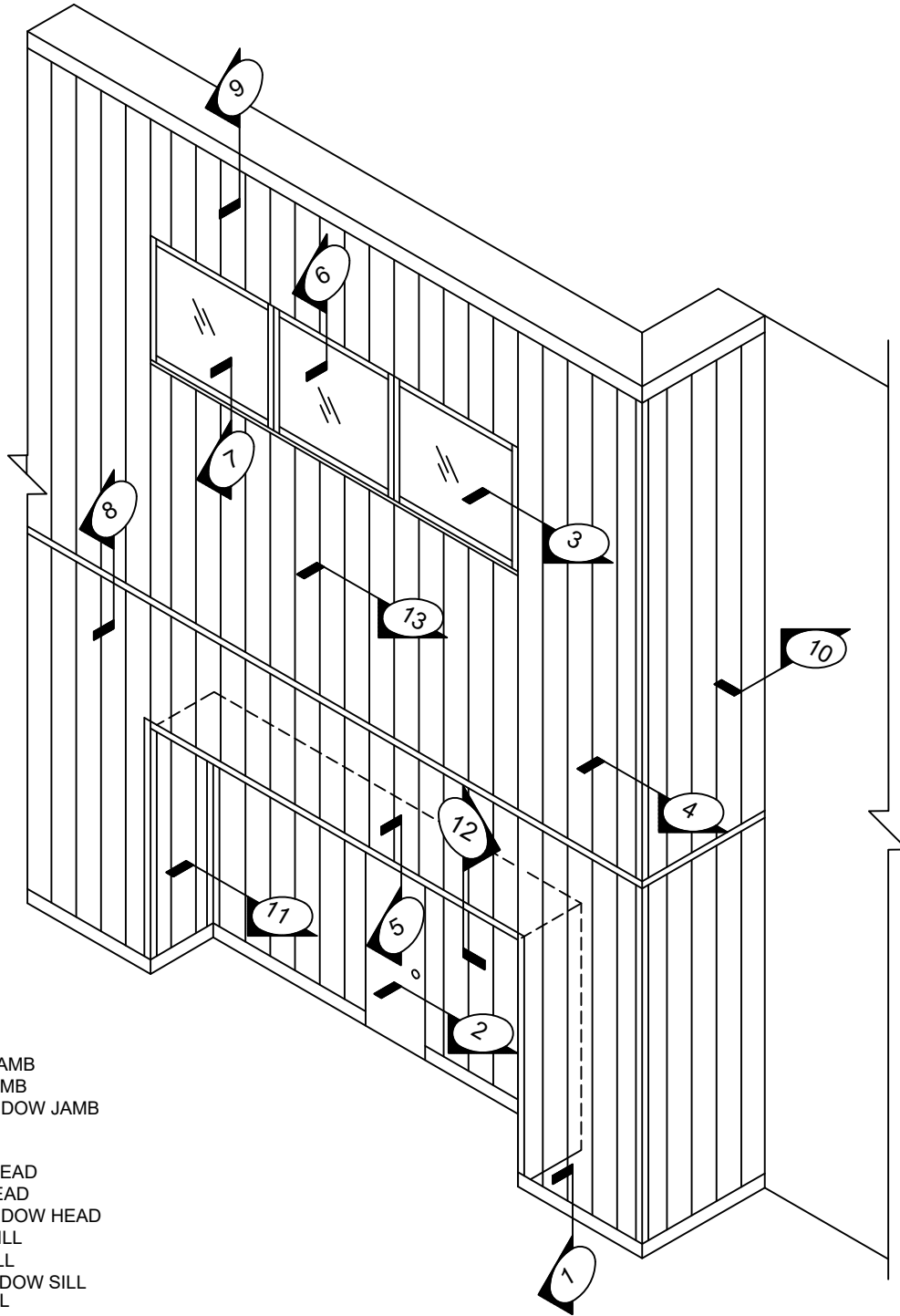
NOT TO SCALE

ISOMETRIC AND CUT THROUGH VIEW OF PANELS



STACBOND

www.stacbond.es



SECTION DETAILS

- 1. BASE
- 2. DOOR JAMB
- 3A. FLANGE WINDOW JAMB
- 3B. PUNCH WINDOW JAMB
- 3C. CURTAIN WALL WINDOW JAMB
- 4. OUTSIDE CORNER
- 5. DOOR HEAD
- 6A. FLANGE WINDOW HEAD
- 6B. PUNCH WINDOW HEAD
- 6C. CURTAIN WALL WINDOW HEAD
- 7A. FLANGE WINDOW SILL
- 7B. PUNCH WINDOW SILL
- 7C. CURTAIN WALL WINDOW SILL
- 8. TYPICAL HORIZONTAL
- 9. PARAPET CAP
- 10. VERTICAL END
- 11. INSIDE CORNER
- 12. TYPICAL SOFFIT
- 13. TYPICAL JOINT

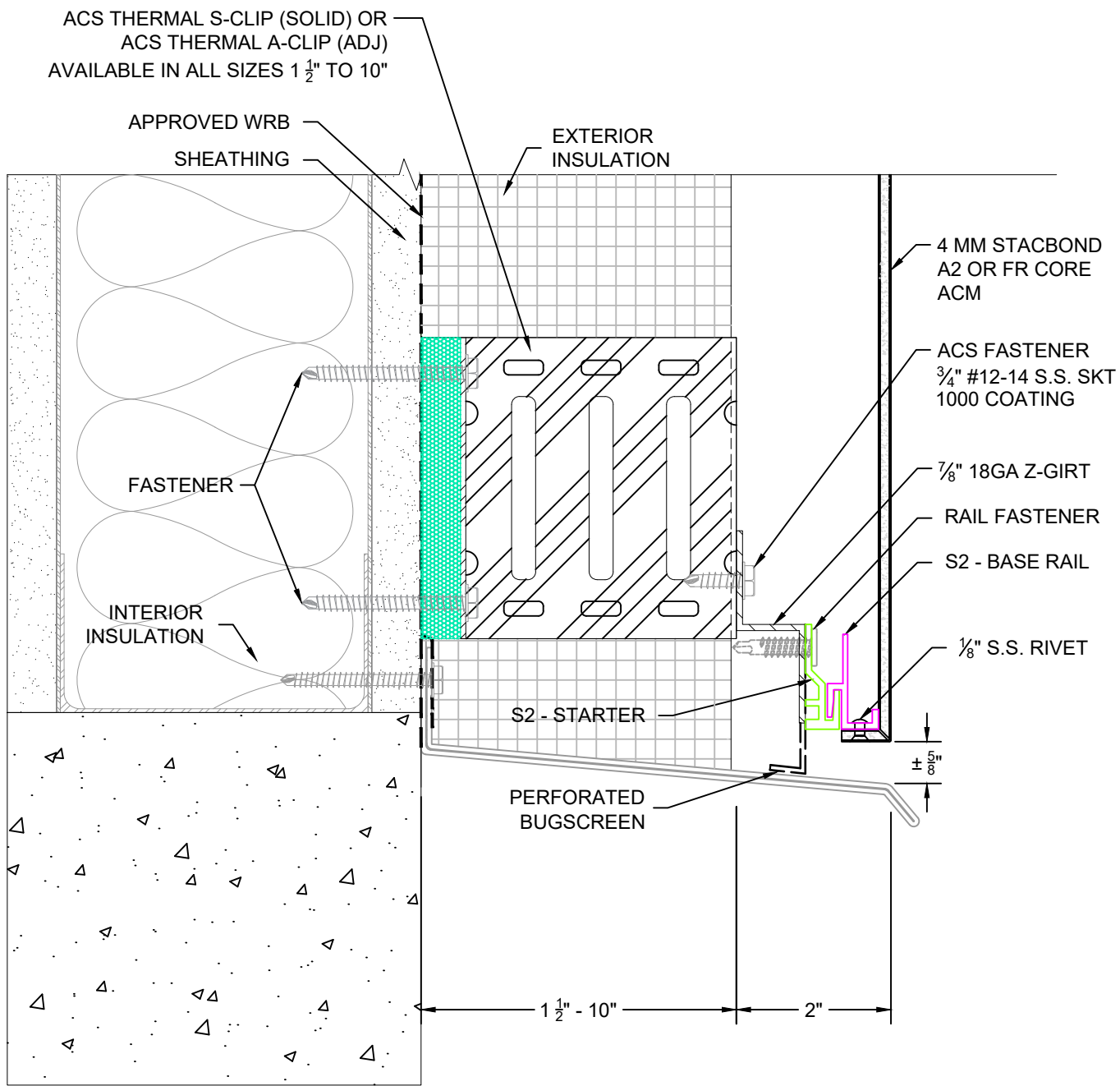
DWG BY KAW	PROJECT NAME	PAGE DESCRIPTION
DATE SUBMITTED SEPTEMBER 2021		
REVISIONS		
NO. _____ DATE _____		
NO. _____ DATE _____		
NO. _____ DATE _____		
NO. _____ DATE _____		



NOT TO SCALE

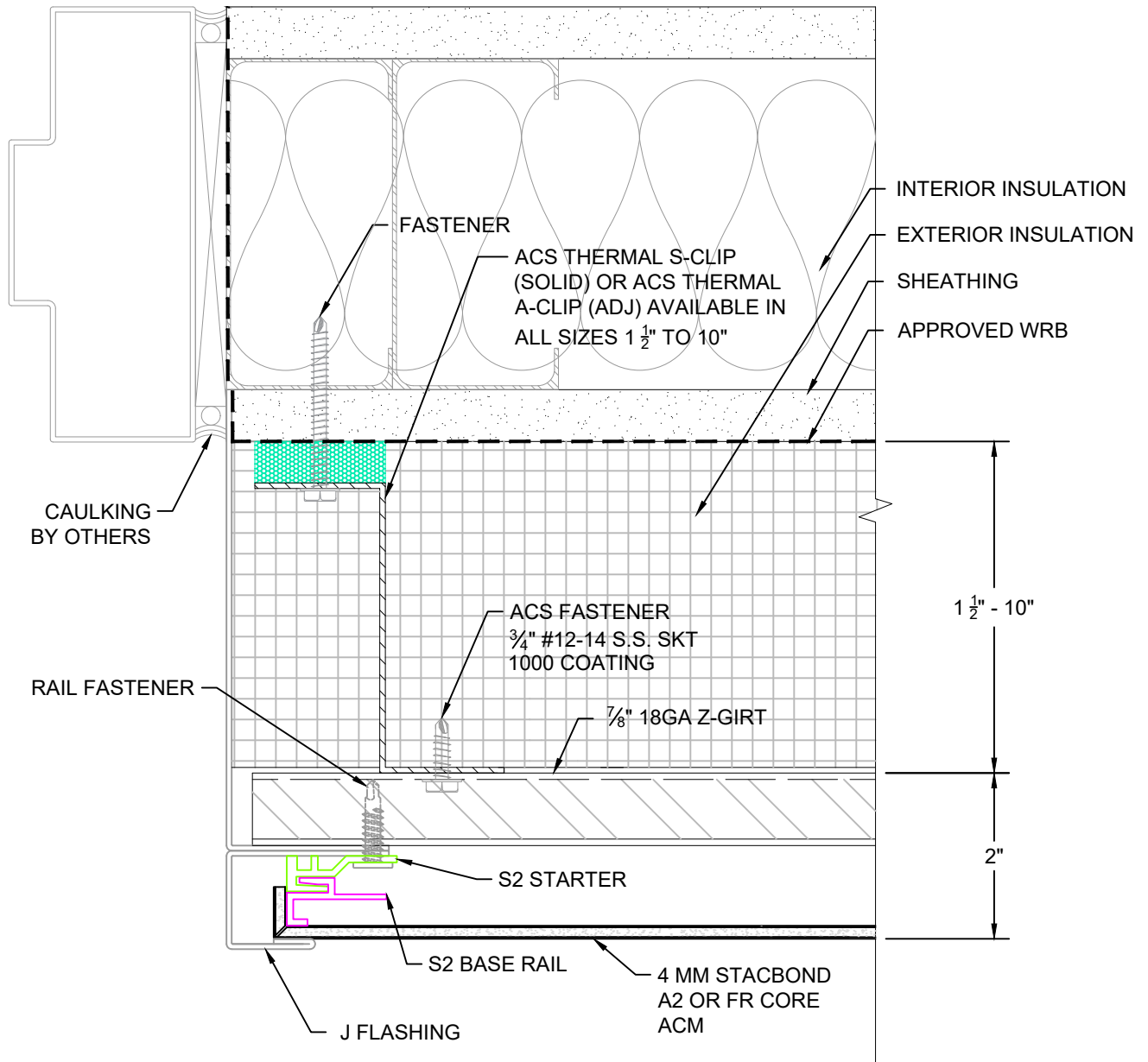
ELEVATION OF TYPICAL DETAILS



Composite Systems Inc.
 35 - 7430 Butler Road
 Omaha, NE 68121
 (781) 352-1015
 info@acscompositesystems.com
www.acscompositesystems.com

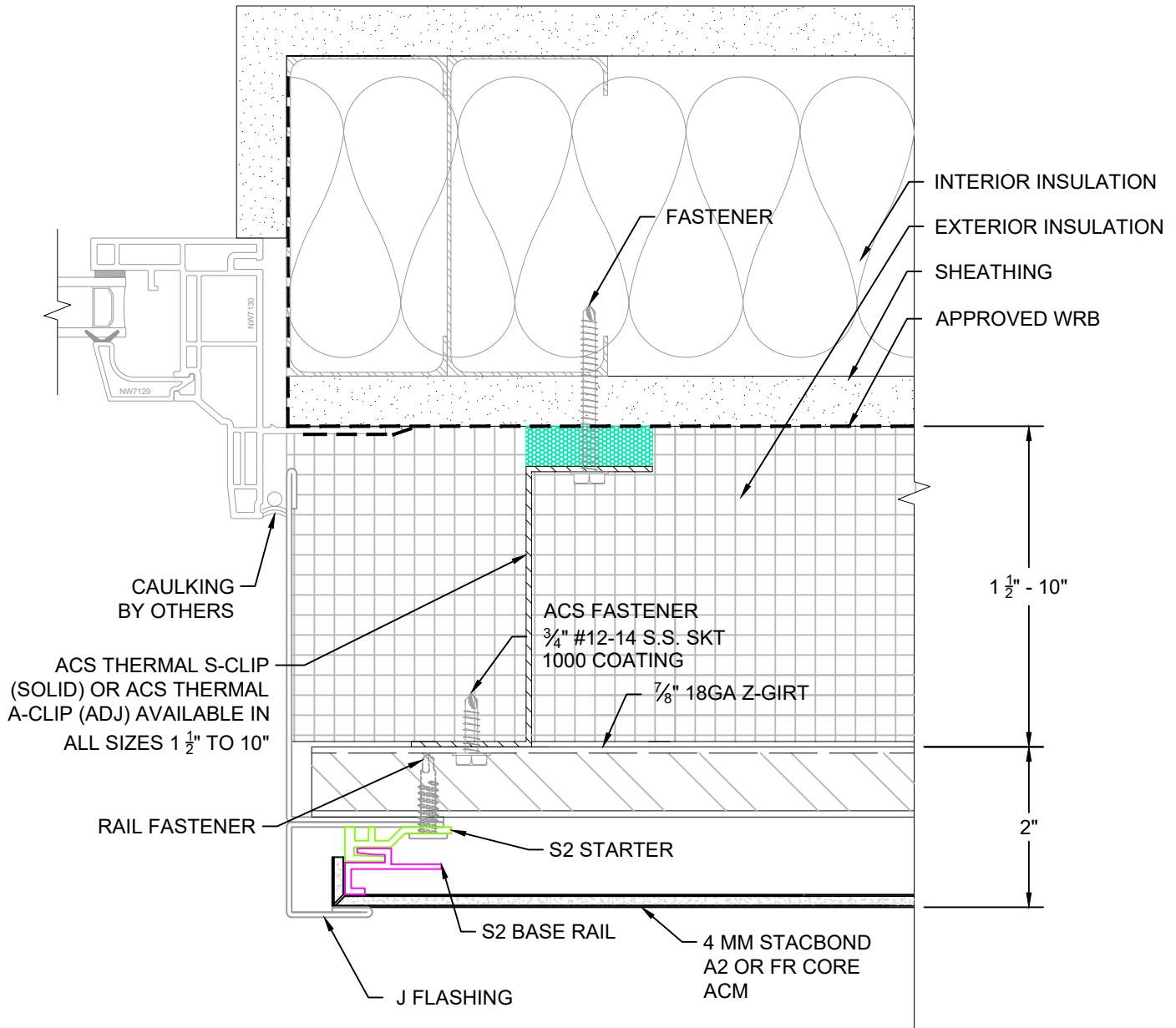
STAC BOND
www.stacbond.es





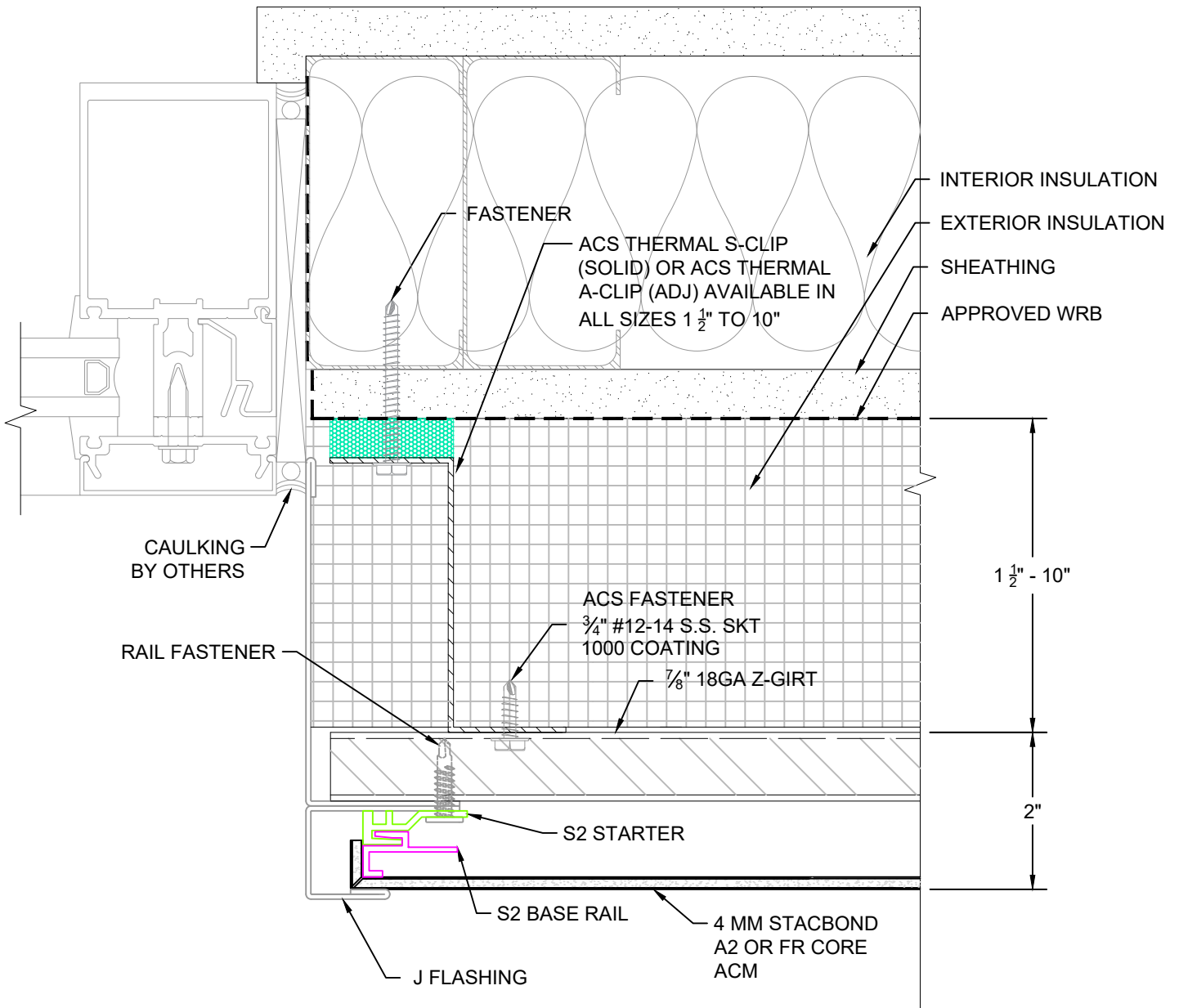
1	DWG BY KAW	PROJECT NAME	PAGE DESCRIPTION	 STAC BOND <small>Composite Systems Inc.</small> <small>35 - 7630 Butler Road</small> <small>Smiths, Pa. 15211</small> <small>(770) 352-1015</small> <small>info@acscompositesystems.com</small> <small>www.acscompositesystems.com</small>	 <small>www.stacbond.es</small>
	DATE SUBMITTED SEPTEMBER 2021		STANDARD DETAILS		
	REVISIONS NO. DATE _____ NO. DATE _____ NO. DATE _____ NO. DATE _____	NOT TO SCALE	BASE		





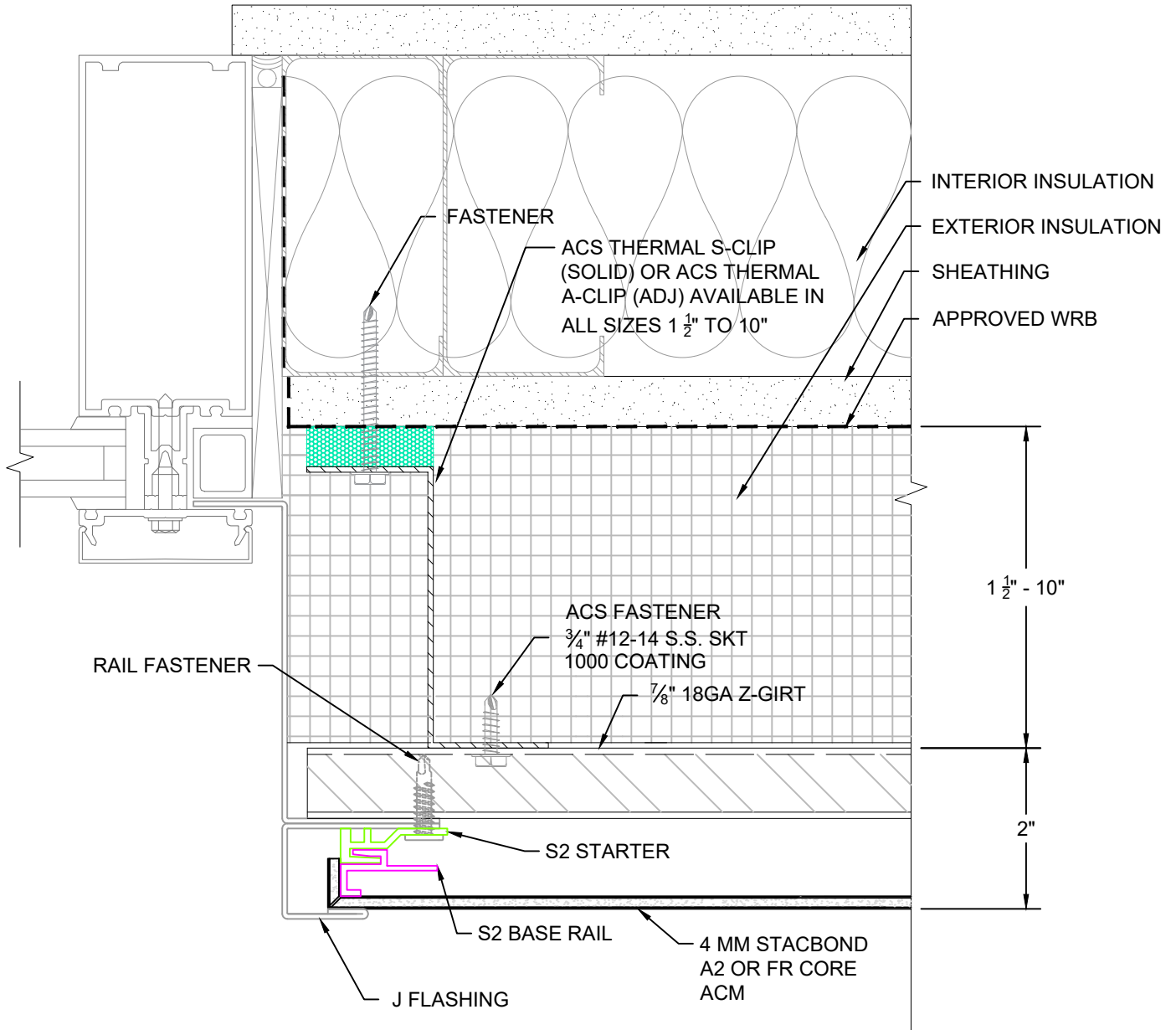
2	DWG BY KAW	PROJECT NAME	PAGE DESCRIPTION				
	DATE SUBMITTED SEPTEMBER 2021					STANDARD DETAILS DOOR JAMB	<small>35 - 7435 Butler Road Snoke, Pa 15211 (770) 352-1015 info@acscompositesystems.com</small>
	REVISIONS NO. _____ DATE _____ NO. _____ DATE _____ NO. _____ DATE _____ NO. _____ DATE _____						




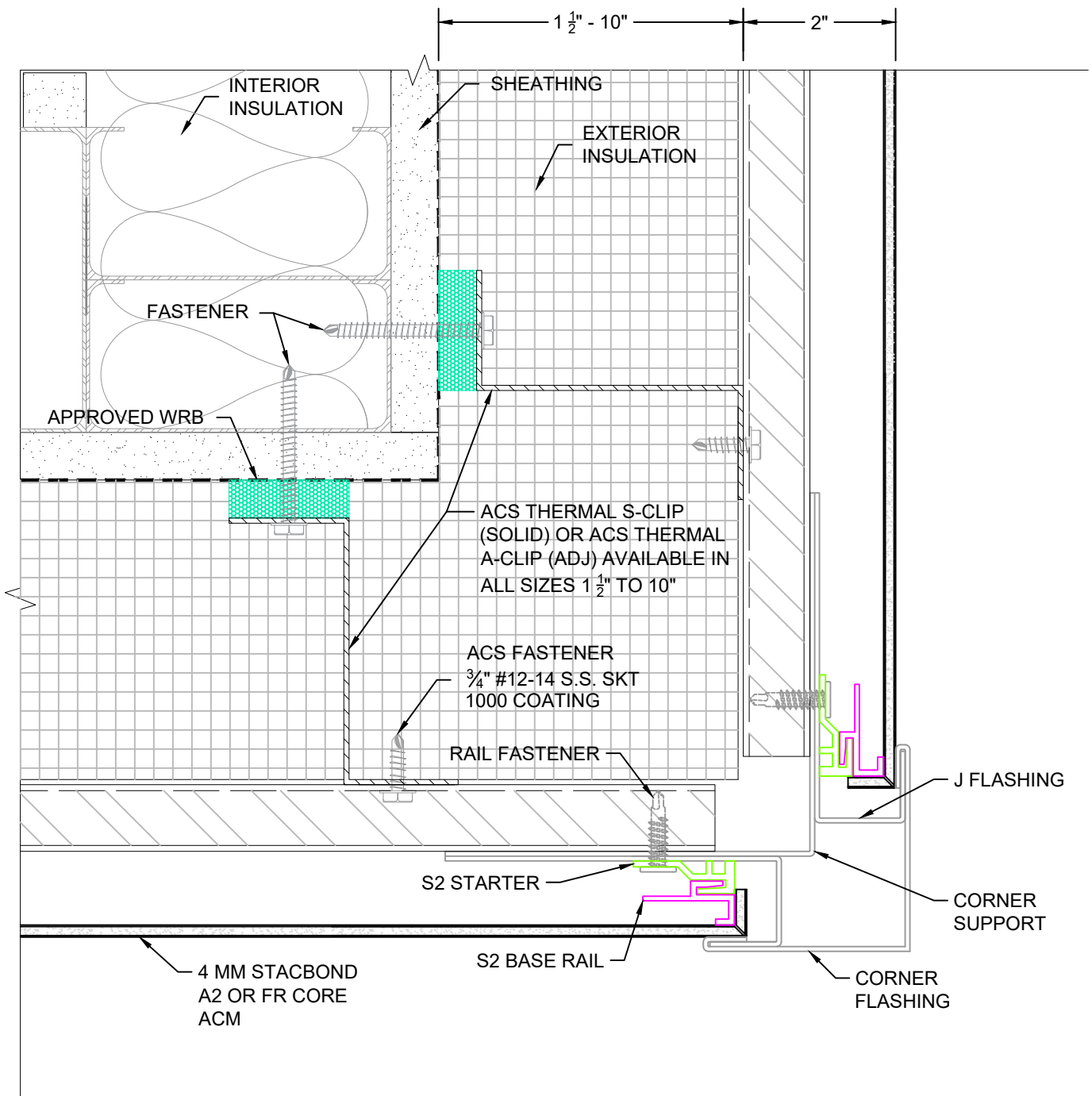
3A	DETAIL	DWG BY KAW	PROJECT NAME	PAGE DESCRIPTION	 STAC BOND <small>35 - 7430 Butler Road Sanke, Pa. 19211 (717) 352-1015 info@acscompositesystems.com</small>	 <small>www.stacbond.es</small>
	DATE SUBMITTED SEPTEMBER 2021	NOT TO SCALE	STANDARD DETAILS FLANGE WINDOW JAMB			
	REVISIONS NO. DATE NO. DATE NO. DATE NO. DATE	THESE DRAWINGS ARE THE SOLE PROPERTY OF ACS COMPOSITE SYSTEMS AND MAY ONLY BE REPRODUCED UPON RECEIPT OF WRITTEN PERMISSION FROM ACS COMPOSITE SYSTEMS INC.	<small>www.acscompositesystems.com</small>			





DETAIL <h1>3B</h1>	DWG BY KAW	PROJECT NAME 	PAGE DESCRIPTION STANDARD DETAILS PUNCH WINDOW JAMB	 Composite Systems Inc. <small>35 - 7635 Butler Road Sooke, BC V9Z 1N1 (778) 352-1015 info@acscompositesystems.com</small>	 <small>www.stacbond.es</small>
	DATE SUBMITTED SEPTEMBER 2021				
REVISIONS NO. _____ DATE _____ NO. _____ DATE _____ NO. _____ DATE _____ NO. _____ DATE _____					



3C	DETAIL	DWG BY KAW	PROJECT NAME	PAGE DESCRIPTION	 STAC BOND <small>www.stacbond.es</small>
		DATE SUBMITTED SEPTEMBER 2021		STANDARD DETAILS CURTAIN WALL WINDOW JAMB	
		REVISIONS NO. _____ DATE _____ NO. _____ DATE _____ NO. _____ DATE _____ NO. _____ DATE _____	NOT TO SCALE	<small>THESE DRAWINGS ARE THE SOLE PROPERTY OF ACS COMPOSITE SYSTEMS AND MAY ONLY BE REPRODUCED UPON RECEIPT OF WRITTEN PERMISSION FROM ACS COMPOSITE SYSTEMS INC.</small>	

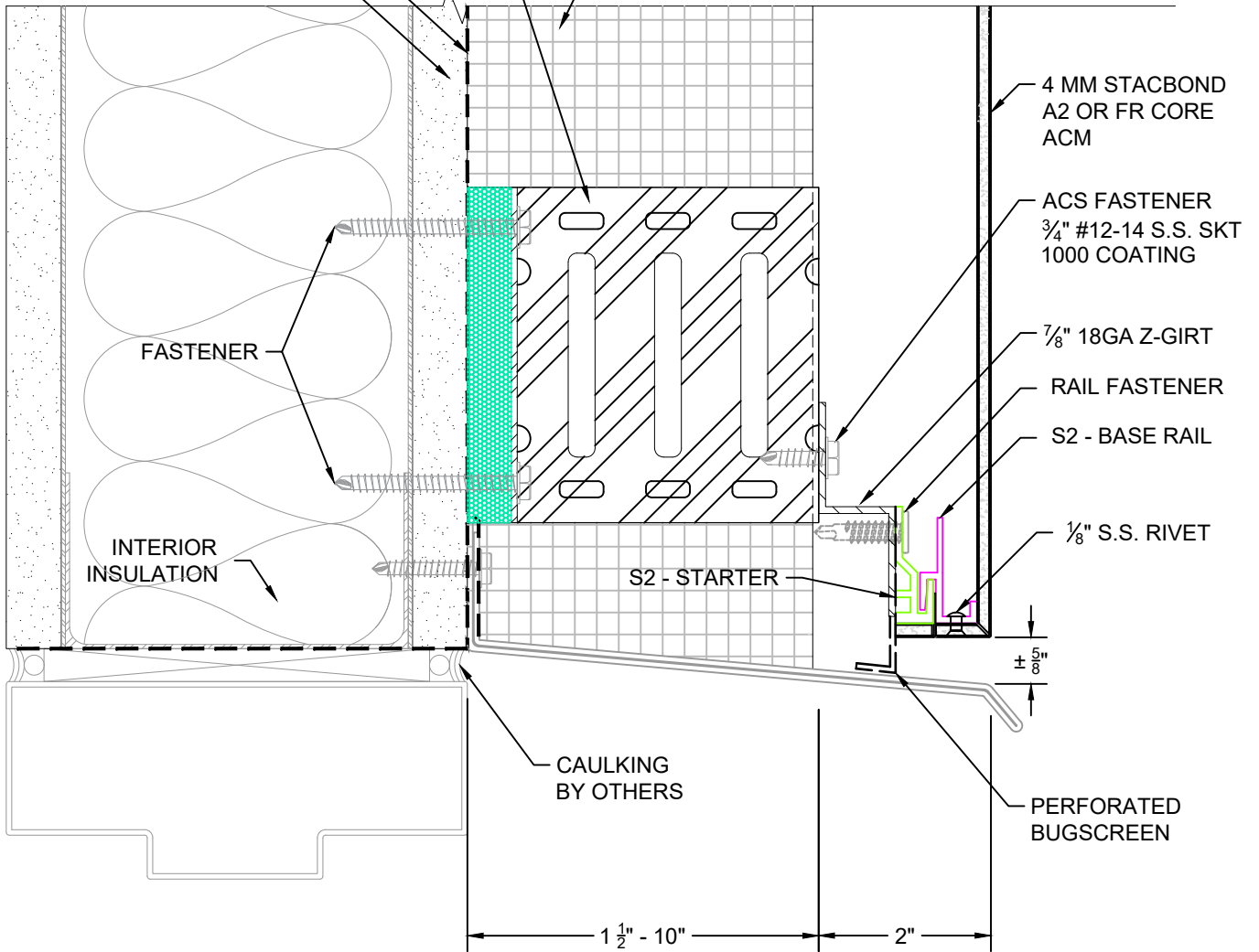


4	DWG BY KAW	PROJECT NAME	PAGE DESCRIPTION						
	DATE SUBMITTED SEPTEMBER 2021					STANDARD DETAILS OUTSIDE CORNER	<small> 35 - 7435 Butler Road Souda, Pa 19211 (770) 352-1015 info@acscompositesystems.com </small>	<small>www.acscompositesystems.com</small>	<small>www.stacbond.es</small>
	REVISIONS NO. DATE _____ NO. DATE _____ NO. DATE _____ NO. DATE _____								

ACS THERMAL S-CLIP (SOLID) OR
ACS THERMAL A-CLIP (ADJ)
AVAILABLE IN ALL SIZES 1 1/2" TO 10"

APPROVED WRB
SHEATHING

EXTERIOR
INSULATION



4 MM STACBOND
A2 OR FR CORE
ACM

ACS FASTENER
3/4" #12-14 S.S. SKT
1000 COATING

7/8" 18GA Z-GIRT

RAIL FASTENER

S2 - BASE RAIL

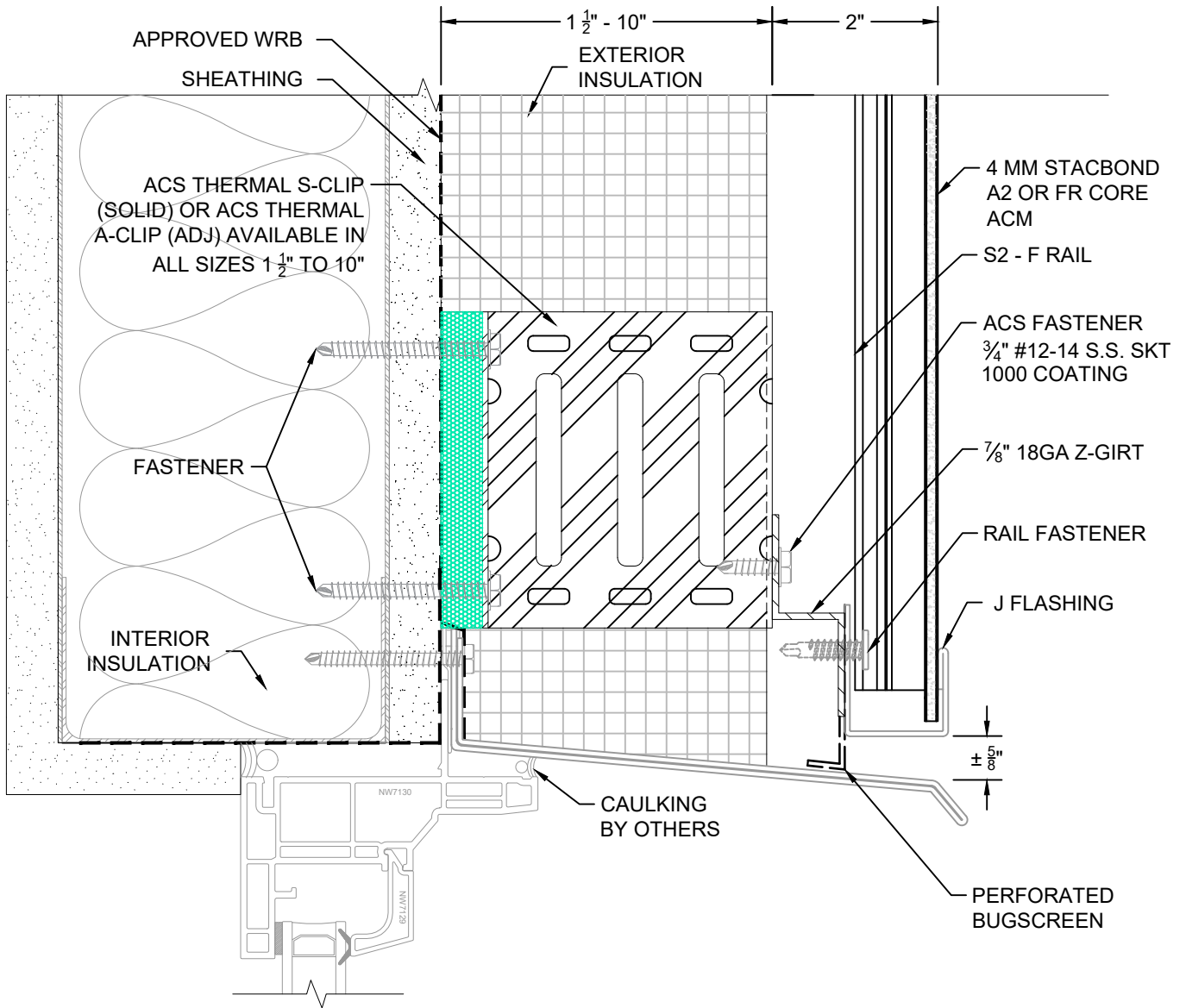
1/8" S.S. RIVET


CAULKING
BY OTHERS

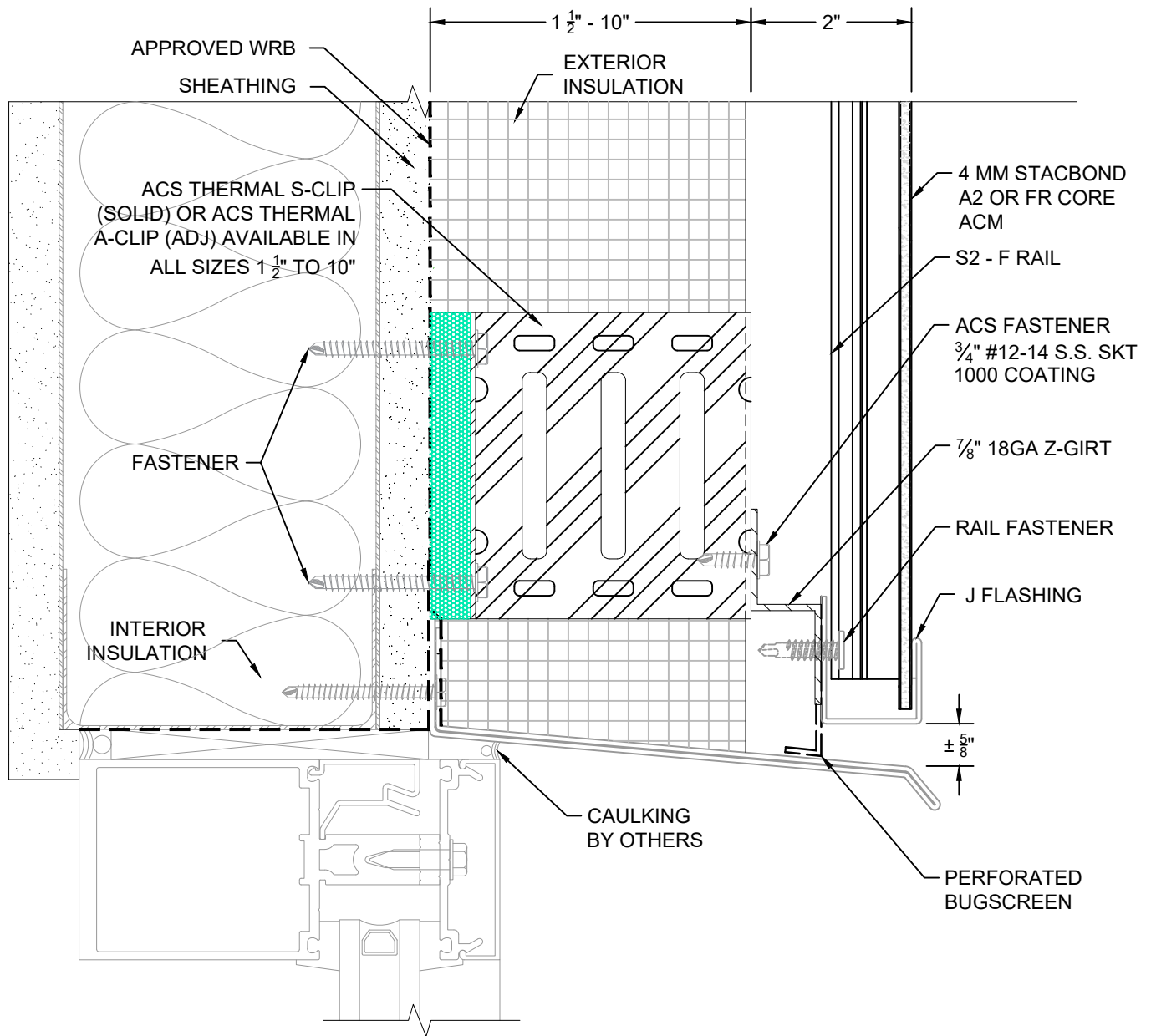
PERFORATED
BUGSCREEN


1 1/2" - 10" 2"

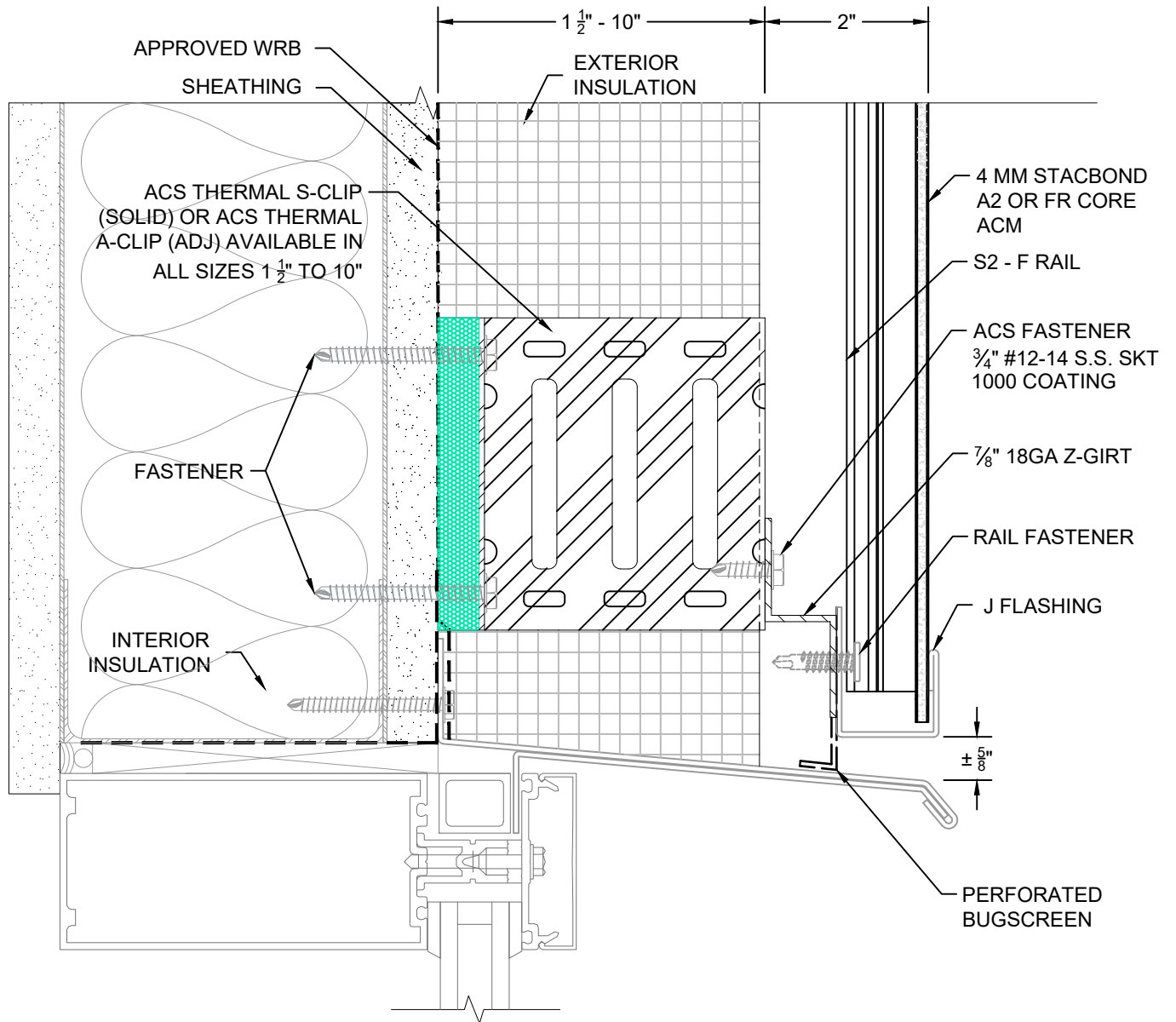
5	DETAIL	DWG BY KAW	PROJECT NAME	PAGE DESCRIPTION	 STAC BOND <small>www.stacbond.es</small>
		DATE SUBMITTED SEPTEMBER 2021		STANDARD DETAILS DOOR HEAD	
		REVISIONS NO. _____ DATE _____ NO. _____ DATE _____ NO. _____ DATE _____ NO. _____ DATE _____	NOT TO SCALE	<small>THESE DRAWINGS ARE THE SOLE PROPERTY OF ACS COMPOSITE SYSTEMS AND MAY ONLY BE REPRODUCED UPON RECEIPT OF WRITTEN PERMISSION FROM ACS COMPOSITE SYSTEMS INC.</small>	



6A	DETAIL	DWG BY KAW	PROJECT NAME	PAGE DESCRIPTION	 STAC BOND [®]
		DATE SUBMITTED SEPTEMBER 2021		STANDARD DETAILS FLANGE WINDOW HEAD	
		REVISIONS NO. _____ DATE _____ NO. _____ DATE _____ NO. _____ DATE _____ NO. _____ DATE _____	NOT TO SCALE	<small>THESE DRAWINGS ARE THE SOLE PROPERTY OF ACS COMPOSITE SYSTEMS AND MAY ONLY BE REPRODUCED UPON RECEIPT OF WRITTEN PERMISSION FROM ACS COMPOSITE SYSTEMS INC.</small>	



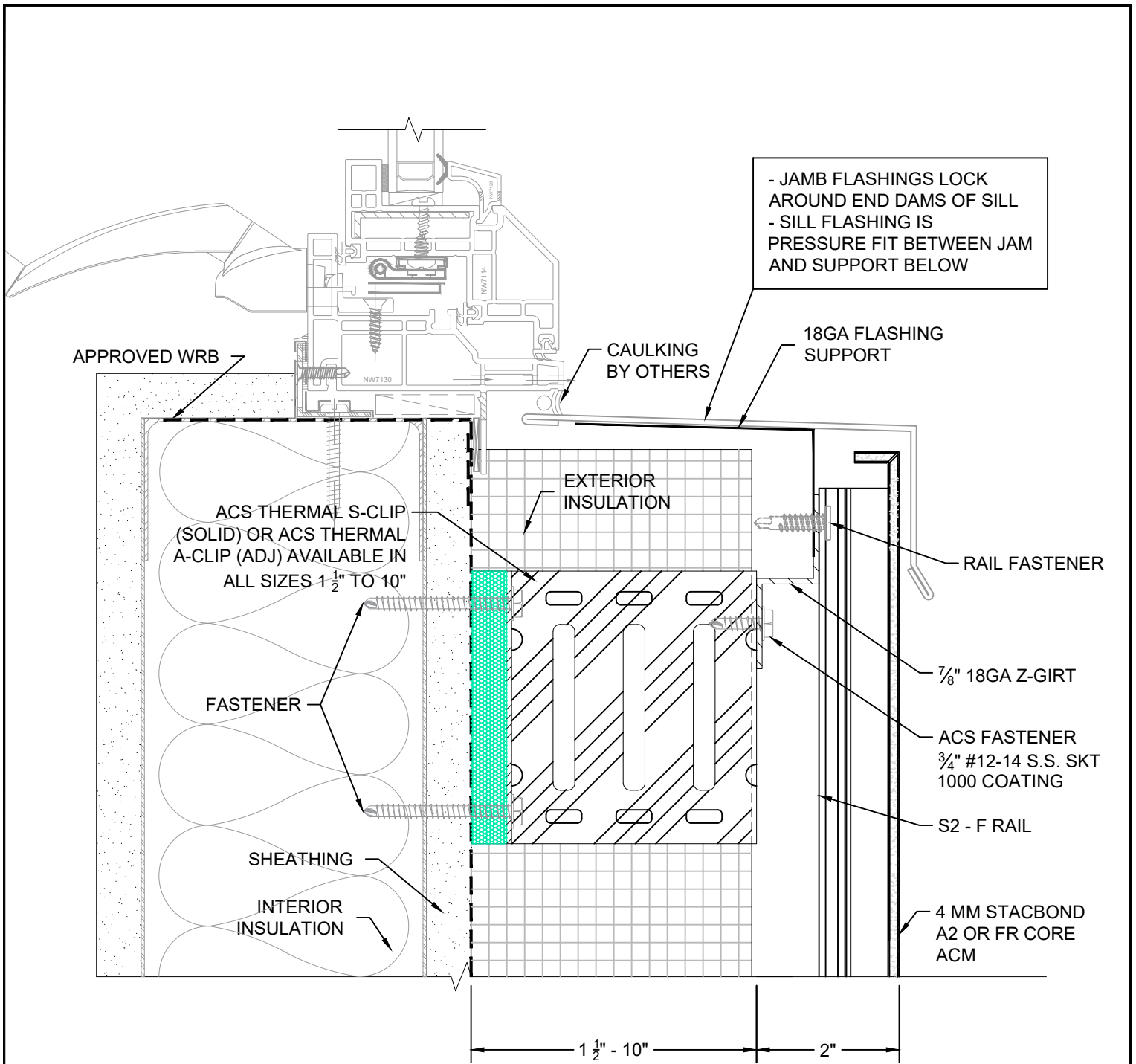
6B	DETAIL	DWG BY KAW	PROJECT NAME	PAGE DESCRIPTION	 STAC BOND <small>www.stacbond.es</small>
		DATE SUBMITTED SEPTEMBER 2021		STANDARD DETAILS PUNCH WINDOW HEAD	
		REVISIONS NO. _____ DATE _____ NO. _____ DATE _____ NO. _____ DATE _____ NO. _____ DATE _____	NOT TO SCALE	<small>THESE DRAWINGS ARE THE SOLE PROPERTY OF ACS COMPOSITE SYSTEMS AND MAY ONLY BE REPRODUCED UPON RECEIPT OF WRITTEN PERMISSION FROM ACS COMPOSITE SYSTEMS INC.</small>	
				<small>www.acscompositesystems.com</small>	



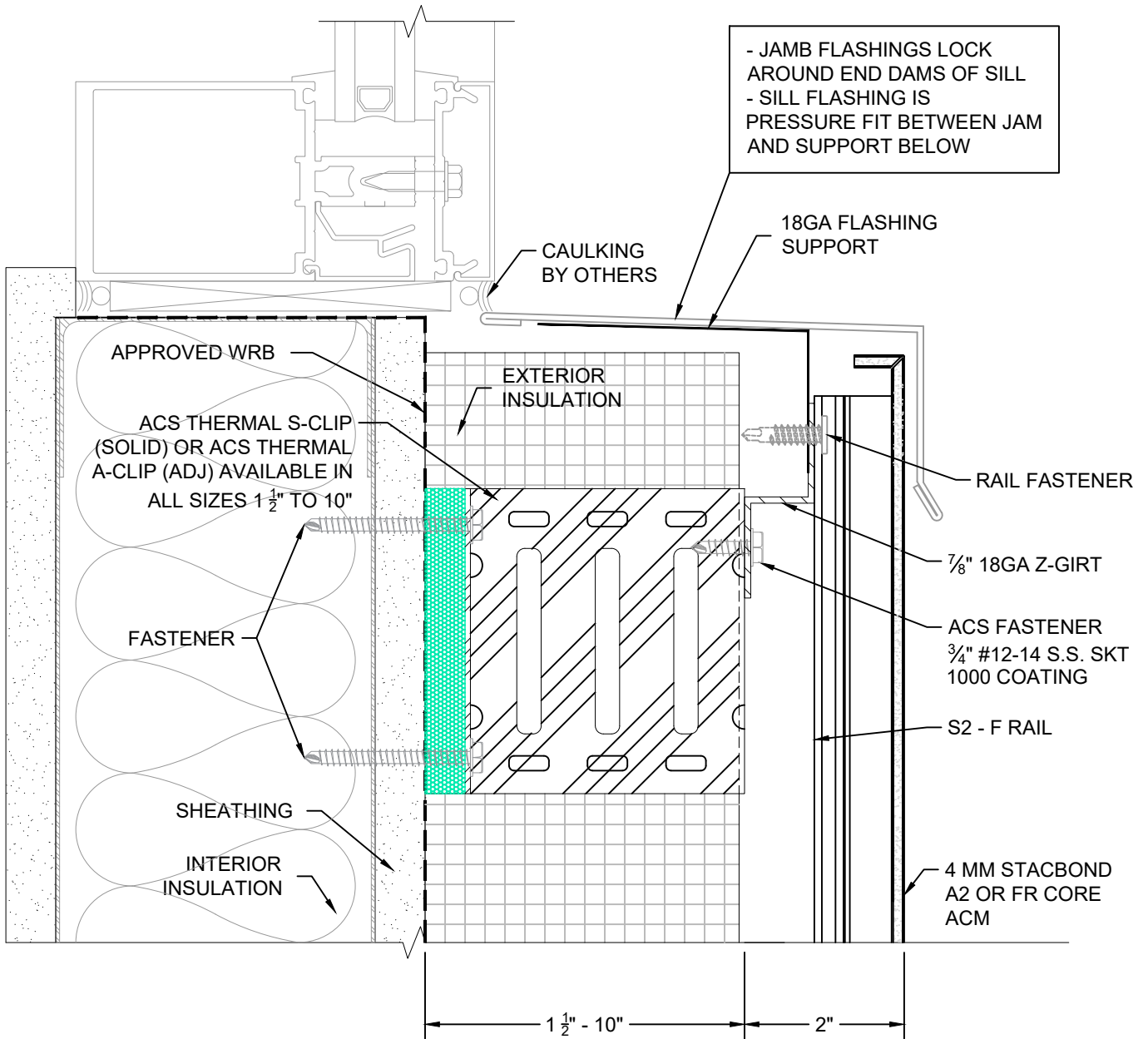
<p>DETAIL</p> <p>6C</p>	<p>DWG BY KAW</p>	<p>PROJECT NAME</p>	<p>PAGE DESCRIPTION</p>
	<p>DATE SUBMITTED SEPTEMBER 2021</p>	<p>NOT TO SCALE</p>	<p>STANDARD DETAILS CURTAIN WALL WINDOW HEAD</p>
	<p>REVISIONS</p> <p>NO. DATE</p> <p>NO. DATE</p> <p>NO. DATE</p> <p>NO. DATE</p>		<p>THESE DRAWINGS ARE THE SOLE PROPERTY OF ACS COMPOSITE SYSTEMS AND MAY ONLY BE REPRODUCED UPON RECEIPT OF WRITTEN PERMISSION FROM ACS COMPOSITE SYSTEMS INC.</p>


35 - 7435 Butler Road
Snoke, Pa 15211
(770) 352-1015
info@acscompositesystems.com
www.acscompositesystems.com

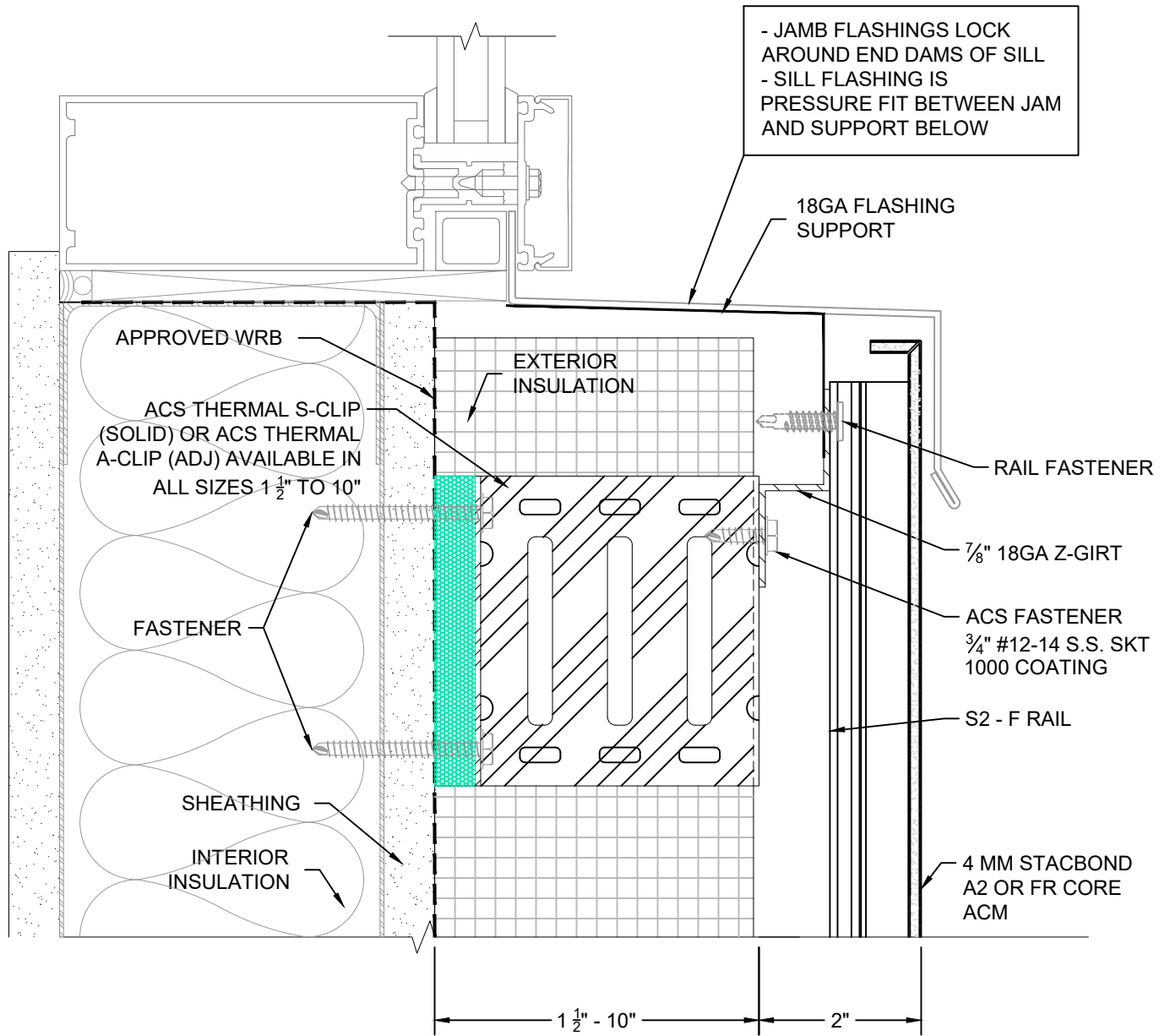
www.stacbond.es



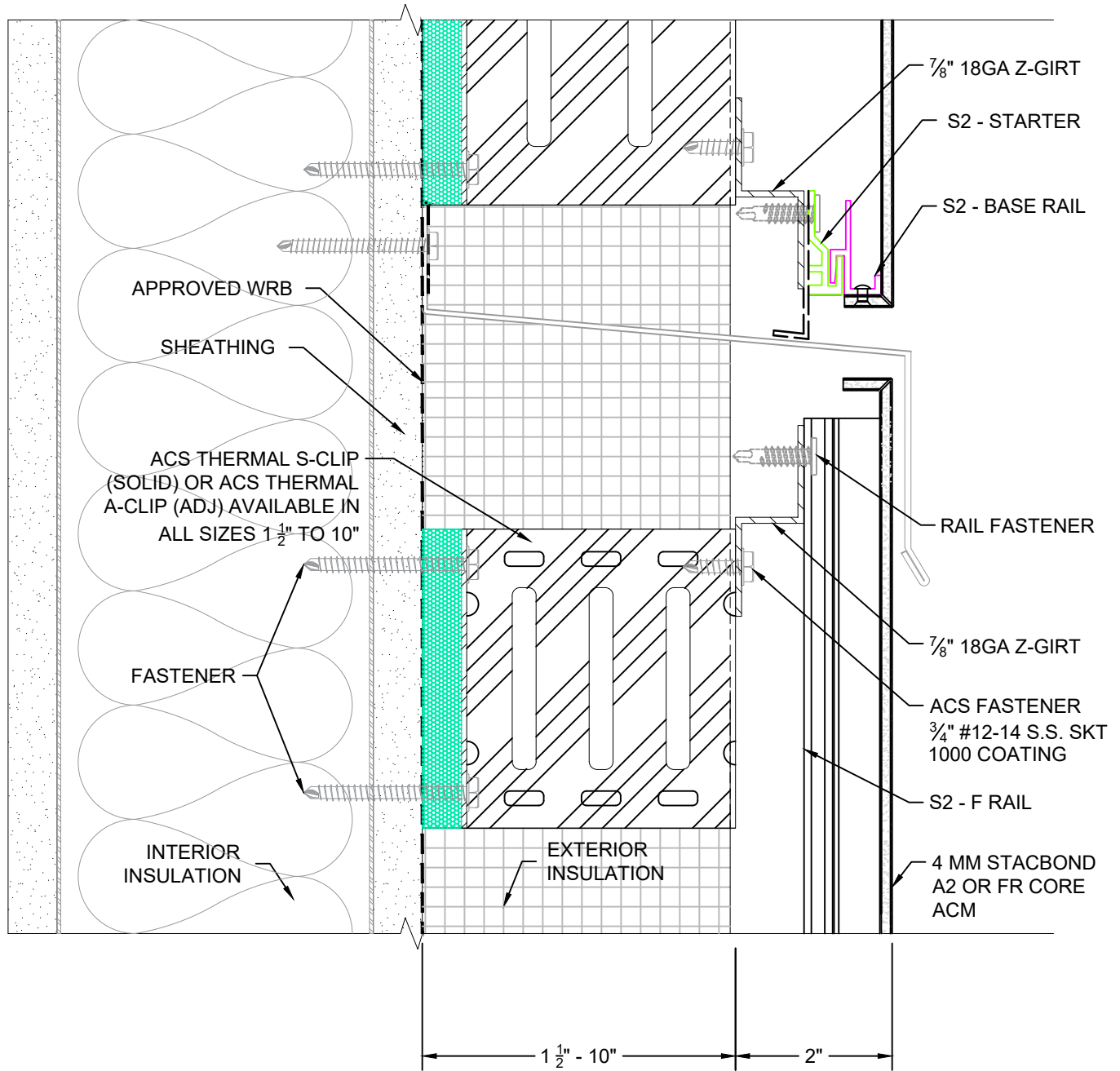
DETAIL <h1>7A</h1>	DWG BY KAW	PROJECT NAME 	PAGE DESCRIPTION STANDARD DETAILS FLANGE WINDOW SILL	 Composite Systems Inc. <small>35 - 7430 Butler Road Snoke, Pa 15211 (770) 352-1015 info@acscompositesystems.com</small> www.acscompositesystems.com	 www.stacbond.es
	DATE SUBMITTED SEPTEMBER 2021				
REVISIONS NO. _____ DATE _____ NO. _____ DATE _____ NO. _____ DATE _____ NO. _____ DATE _____					





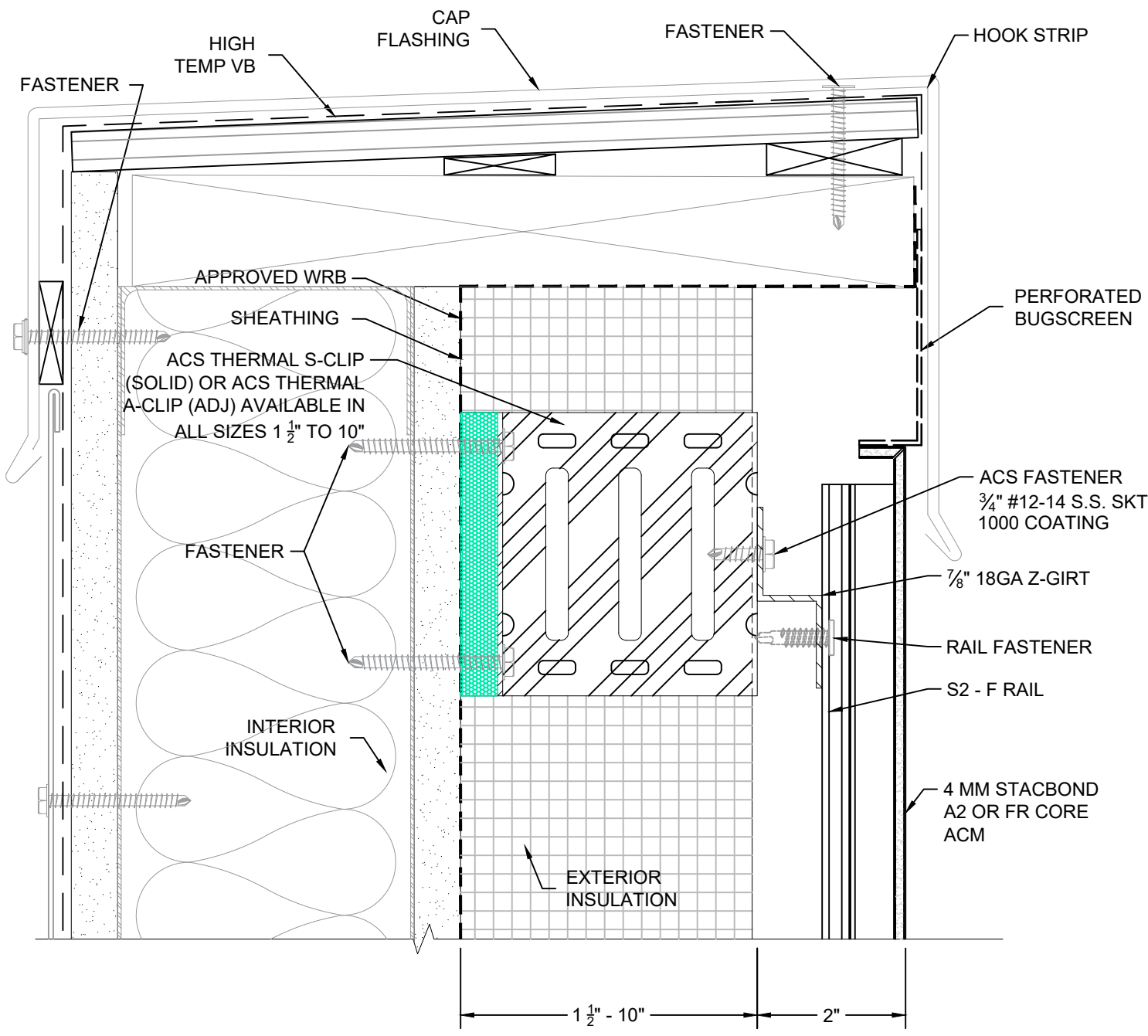
7B	DETAIL	DWG BY KAW	PROJECT NAME	PAGE DESCRIPTION	 STAC BOND <small>www.stacbond.es</small>
		DATE SUBMITTED SEPTEMBER 2021		STANDARD DETAILS PUNCH WINDOW SILL	
		REVISIONS NO. DATE NO. DATE NO. DATE NO. DATE	NOT TO SCALE	<small>THESE DRAWINGS ARE THE SOLE PROPERTY OF ACS COMPOSITE SYSTEMS AND MAY ONLY BE REPRODUCED UPON RECEIPT OF WRITTEN PERMISSION FROM ACS COMPOSITE SYSTEMS INC.</small>	





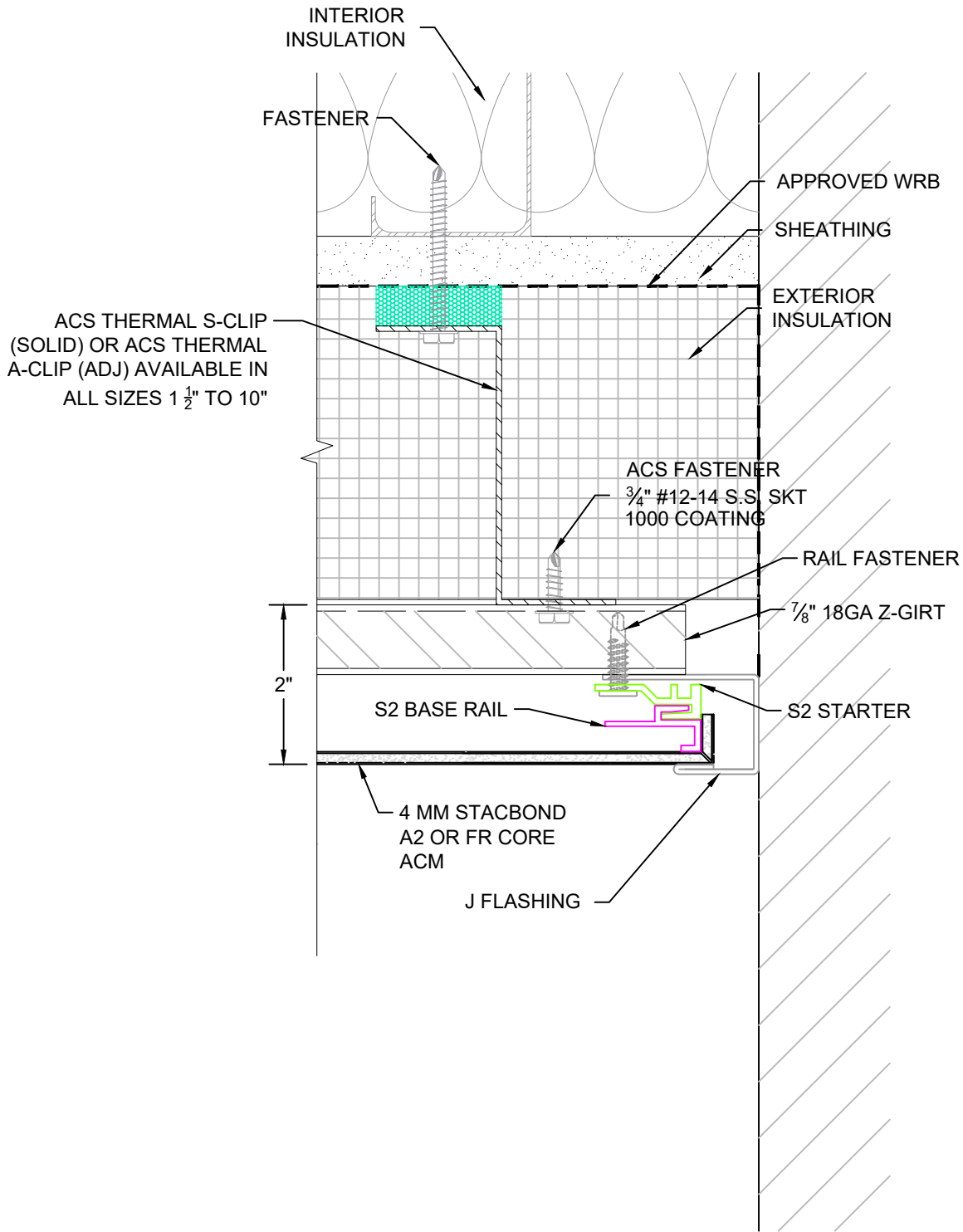
7C	DWG BY KAW	PROJECT NAME	PAGE DESCRIPTION STANDARD DETAILS CURTAIN WALL WINDOW SILL	 Composite Systems Inc. <small>35 - 7435 Butler Road Snoke, Pa. 15211 (770) 352-1015 info@acscompositesystems.com</small> www.acscompositesystems.com	 www.stacbond.es
	DATE SUBMITTED SEPTEMBER 2021				
	REVISIONS NO. _____ DATE _____ NO. _____ DATE _____ NO. _____ DATE _____ NO. _____ DATE _____	THESE DRAWINGS ARE THE SOLE PROPERTY OF ACS COMPOSITE SYSTEMS AND MAY ONLY BE REPRODUCED UPON RECEIPT OF WRITTEN PERMISSION FROM ACS COMPOSITE SYSTEMS INC.			




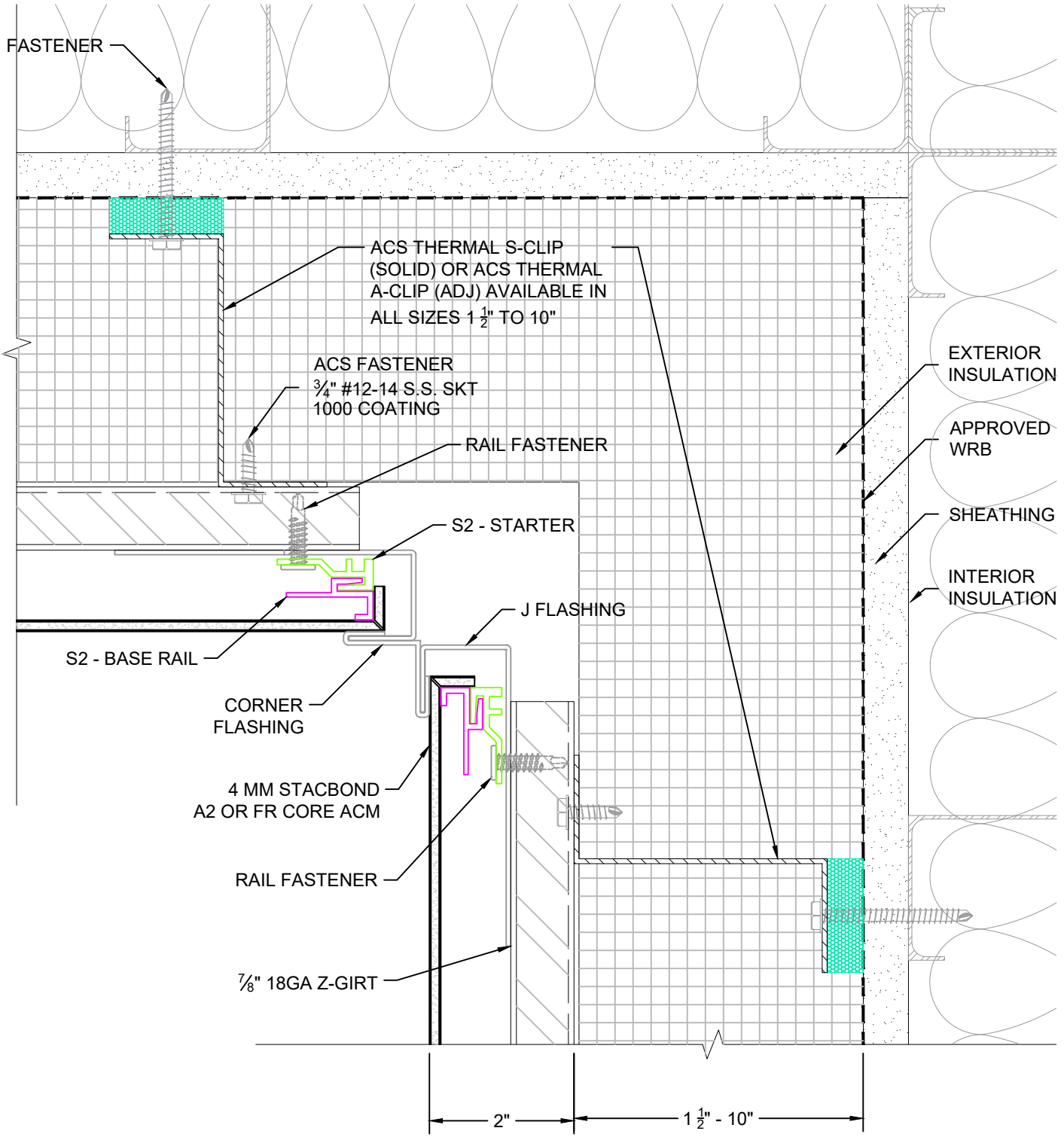
8	DETAIL	DWG BY KAW	PROJECT NAME	PAGE DESCRIPTION	 STAC BOND <small>35 - 7420 Butler Road Snoke, Pa 19211 (717) 352-1015 info@acscompositesystems.com</small>	 <small>www.stacbond.es</small>
		DATE SUBMITTED SEPTEMBER 2021		STANDARD DETAILS TYPICAL HORIZONTAL		
		REVISIONS NO. _____ DATE _____ NO. _____ DATE _____ NO. _____ DATE _____ NO. _____ DATE _____	NOT TO SCALE	<small>THESE DRAWINGS ARE THE SOLE PROPERTY OF ACS COMPOSITE SYSTEMS AND MAY ONLY BE REPRODUCED UPON RECEIPT OF WRITTEN PERMISSION FROM ACS COMPOSITE SYSTEMS INC.</small>		





9	DWG BY KAW	PROJECT NAME	PAGE DESCRIPTION	 STAC BOND <small>35 - 7620 Butler Road Snoke, Pa 19211 (717) 352-1015 info@acscompositesystems.com</small> www.acscompositesystems.com	 <small>www.stacbond.es</small>
	DATE SUBMITTED SEPTEMBER 2021		STANDARD DETAILS PARAPET CAP		
	REVISIONS NO. _____ DATE _____ NO. _____ DATE _____ NO. _____ DATE _____ NO. _____ DATE _____	NOT TO SCALE	<small>THESE DRAWINGS ARE THE SOLE PROPERTY OF ACS COMPOSITE SYSTEMS AND MAY ONLY BE REPRODUCED UPON RECEIPT OF WRITTEN PERMISSION FROM ACS COMPOSITE SYSTEMS INC.</small>		

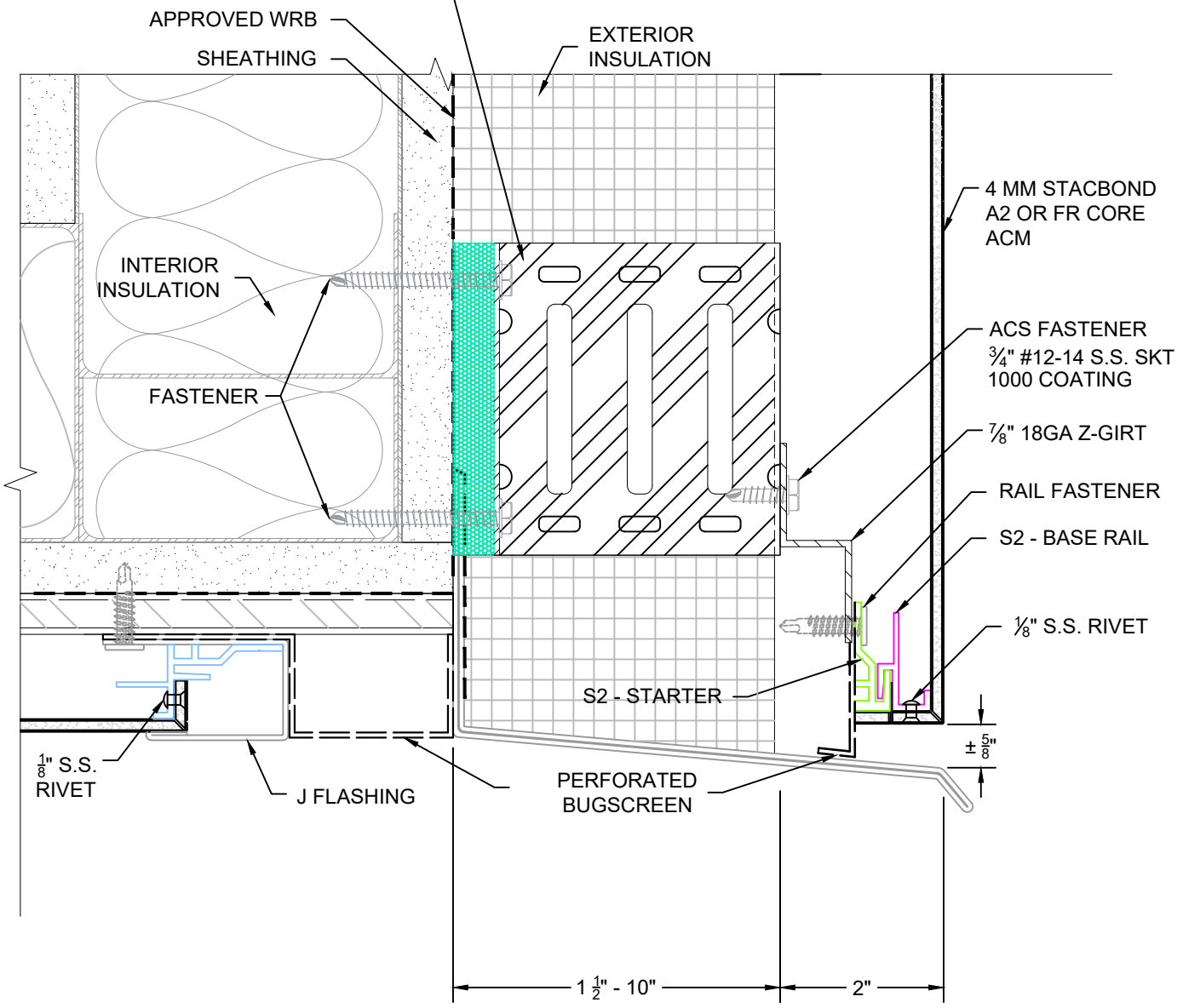



10	DWG BY KAW	PROJECT NAME	PAGE DESCRIPTION	 Composite Systems Inc. <small>35 - 7430 Butler Road Sooke, BC V9Z 1N1 (778) 352-1015 info@acscompositesystems.com</small>	STAC BOND
	DATE SUBMITTED SEPTEMBER 2021				
	REVISIONS NO. _____ DATE _____ NO. _____ DATE _____ NO. _____ DATE _____ NO. _____ DATE _____	NOT TO SCALE	<small>THESE DRAWINGS ARE THE SOLE PROPERTY OF ACS COMPOSITE SYSTEMS AND MAY ONLY BE REPRODUCED UPON RECEIPT OF WRITTEN PERMISSION FROM ACS COMPOSITE SYSTEMS INC.</small>		

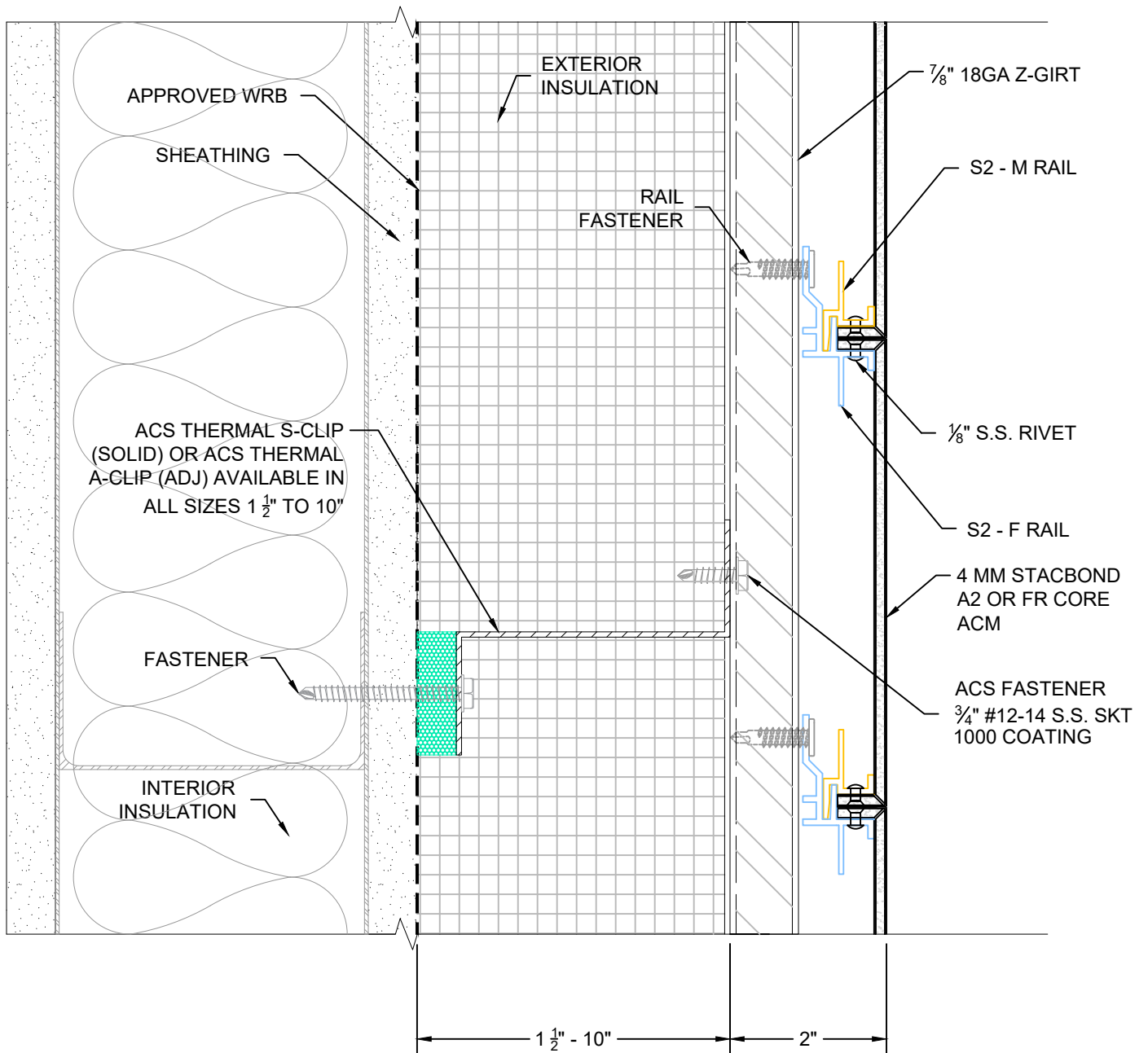




11	DWG BY KAW	NOT TO SCALE	PAGE DESCRIPTION STANDARD DETAILS INSIDE CORNER	 ACS Composite Systems Inc. <small>35 - 7435 Butler Road SoHo, TX 75211 (770) 352-1015 info@acscompositesystems.com</small>	 STACBOND <small>www.stacbond.es</small>
	DATE SUBMITTED SEPTEMBER 2021		THESE DRAWINGS ARE THE SOLE PROPERTY OF ACS COMPOSITE SYSTEMS AND MAY ONLY BE REPRODUCED UPON RECEIPT OF WRITTEN PERMISSION FROM ACS COMPOSITE SYSTEMS INC.		
	REVISIONS NO. DATE NO. DATE NO. DATE NO. DATE		PROJECT NAME		

ACS THERMAL S-CLIP (SOLID) OR
ACS THERMAL A-CLIP (ADJ)
AVAILABLE IN ALL SIZES 1 1/2" TO 10"



12	DETAIL	DWG BY KAW	PROJECT NAME	PAGE DESCRIPTION	 STAC BOND <small>Composite Systems Inc.</small> <small>35 - 7435 Butler Road</small> <small>Sanke, Pa. 19211</small> <small>(717) 352-1015</small> <small>info@acscompositesystems.com</small> <small>www.acscompositesystems.com</small>	STANDARD DETAILS TYPICAL SOFFIT <small>THESE DRAWINGS ARE THE SOLE PROPERTY OF ACS COMPOSITE SYSTEMS AND MAY ONLY BE REPRODUCED UPON RECEIPT OF WRITTEN PERMISSION FROM ACS COMPOSITE SYSTEMS INC.</small>	STAC BOND <small>www.stacbond.es</small>
		DATE SUBMITTED SEPTEMBER 2021					
		REVISIONS NO. DATE NO. DATE NO. DATE NO. DATE	NOT TO SCALE				



13	DETAIL	DWG BY KAW	PROJECT NAME	PAGE DESCRIPTION	 STAC BOND <small>35 - 7635 Butler Road Snoke, Pa 15211 (770) 352-1015 info@acscompositesystems.com</small>	 <small>www.stacbond.es</small>
		DATE SUBMITTED SEPTEMBER 2021		STANDARD DETAILS TYPICAL JOINT		
		REVISIONS NO. _____ DATE _____ NO. _____ DATE _____ NO. _____ DATE _____ NO. _____ DATE _____	NOT TO SCALE	<small>THESE DRAWINGS ARE THE SOLE PROPERTY OF ACS COMPOSITE SYSTEMS AND MAY ONLY BE REPRODUCED UPON RECEIPT OF WRITTEN PERMISSION FROM ACS COMPOSITE SYSTEMS INC.</small>		