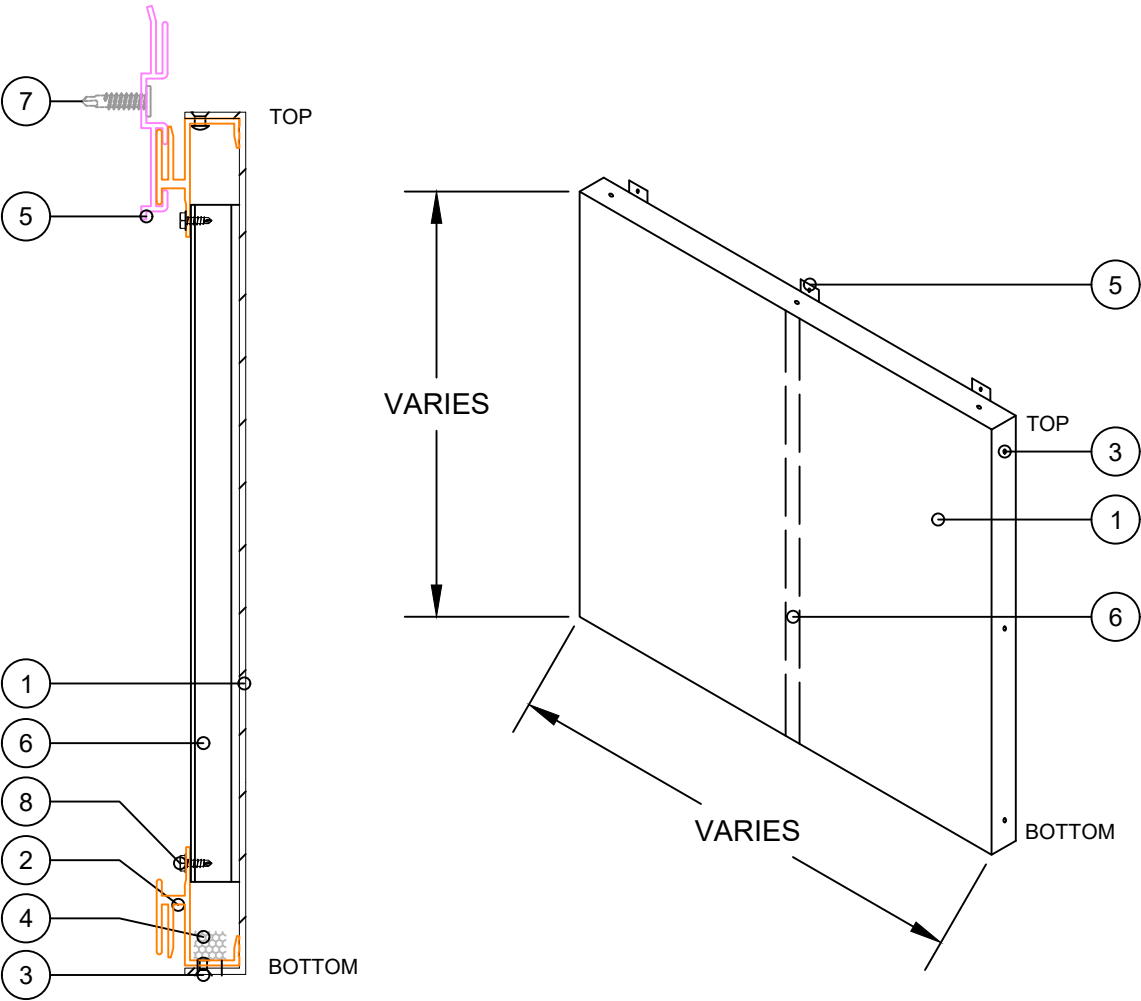



ACS COMPOSITE SYSTEMS INC.

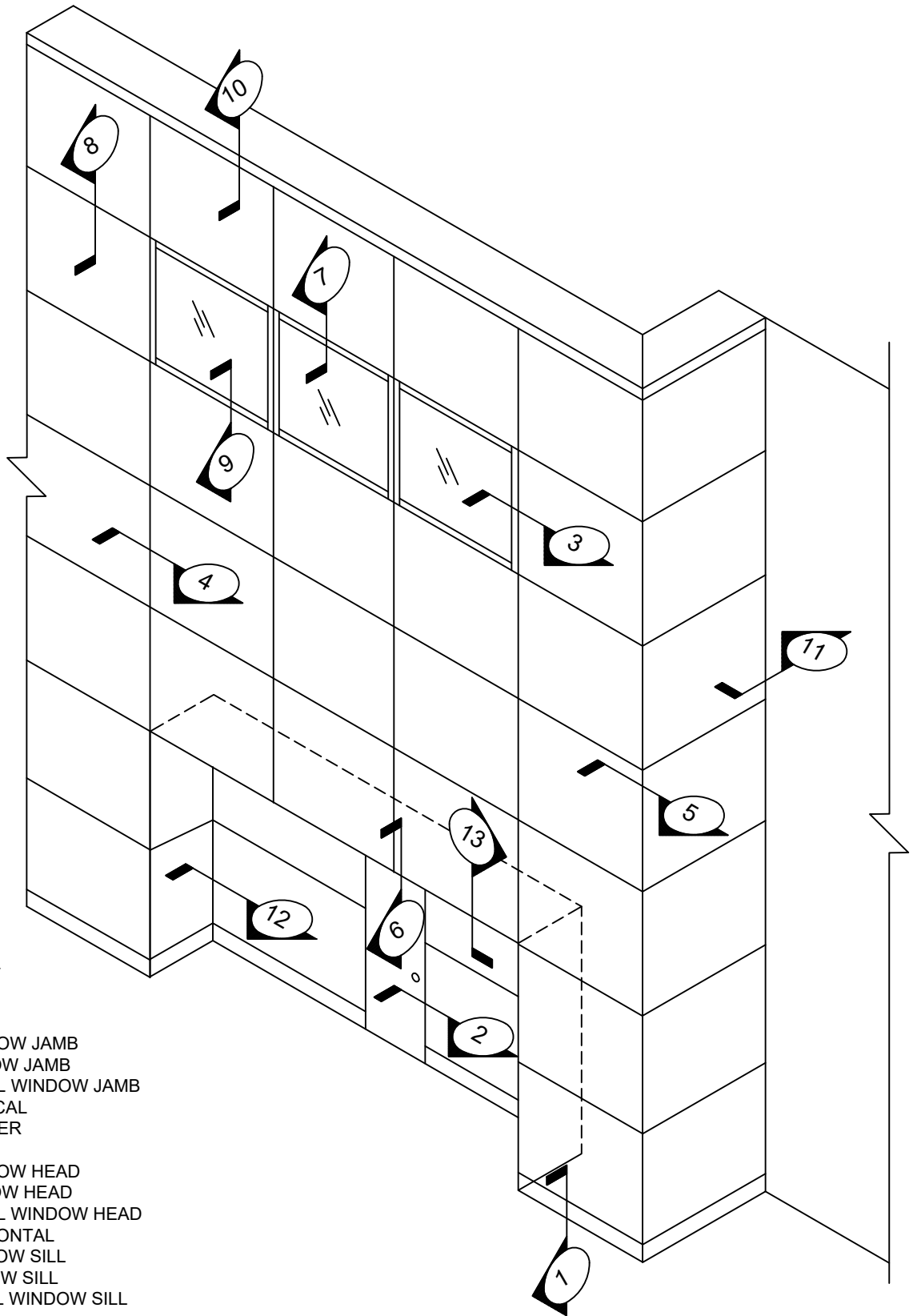
PLATE SYSTEMS - 4



LIST OF MATERIALS

- | | |
|---------------------------------|-------------------------------------|
| 1. PLATE (SINGLE SKIN MATERIAL) | 5. S1 - DUAL CLIP (ALUMINUM) |
| 2. S1 - FRAME (ALUMINUM) | 6. S1 - STIFFENER (ALUMINUM) |
| 3. 1/8" S.S. RIVET | 7. #10 - 3/4" SCREW DT-2000 COATING |
| 4. WEEP HOLE 3/8" WITH BAFFLE | 8. #10 - 1/2" SCREW DT-2000 COATING |

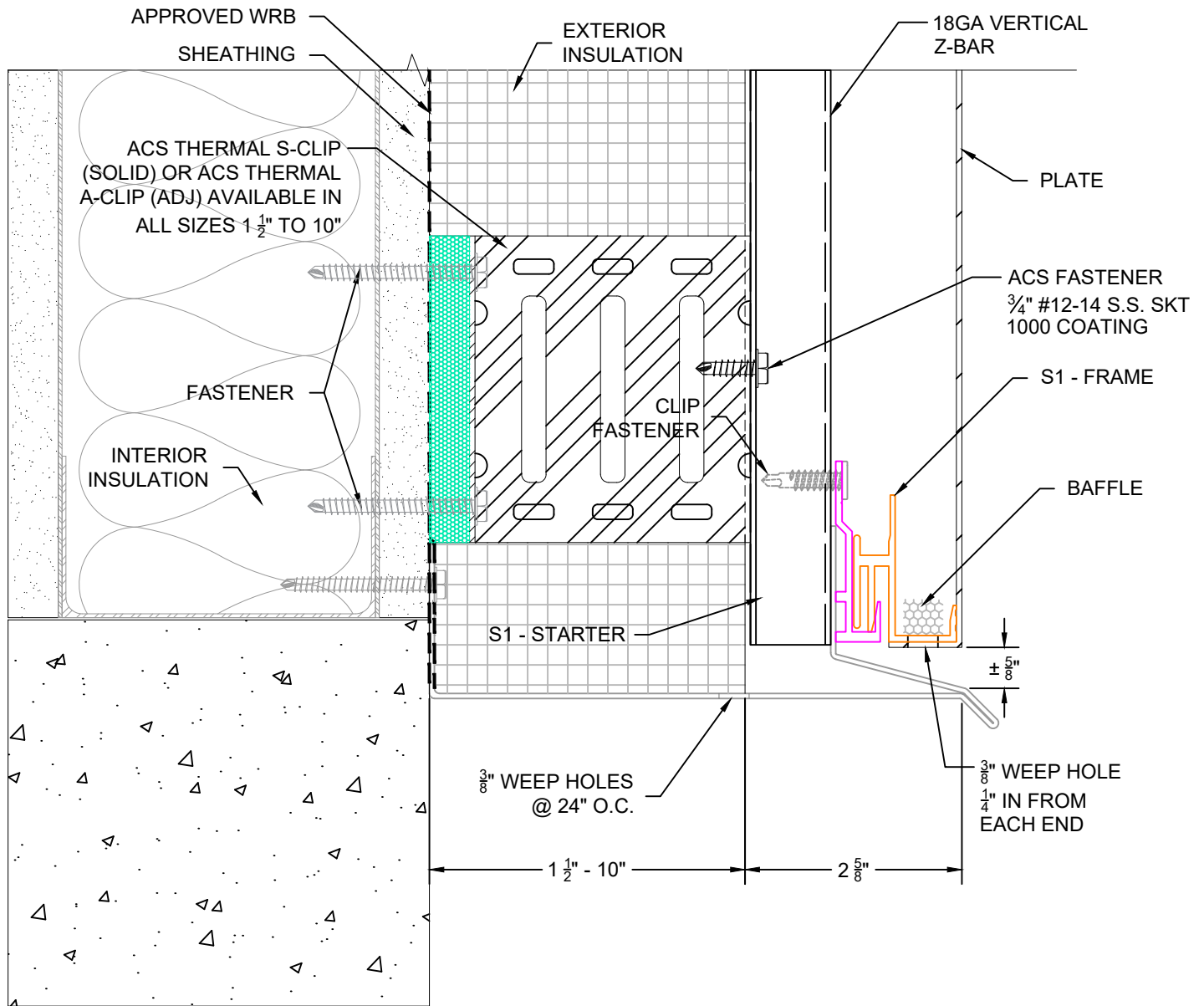
DWG BY KAW	PROJECT NAME	PAGE DESCRIPTION	 <p>Composite Systems Inc.</p> <p>35 - 7450 Butler Road Socle, NC 29211 (770) 392-1015 info@acscompositesystems.com</p> <p>www.acscompositesystems.com</p>
DATE SUBMITTED SEPTEMBER 2021		ISOMETRIC AND CUT THROUGH VIEW OF PANELS	
REVISIONS	NOT TO SCALE		
NO. _____ DATE _____ NO. _____ DATE _____ NO. _____ DATE _____ NO. _____ DATE _____			



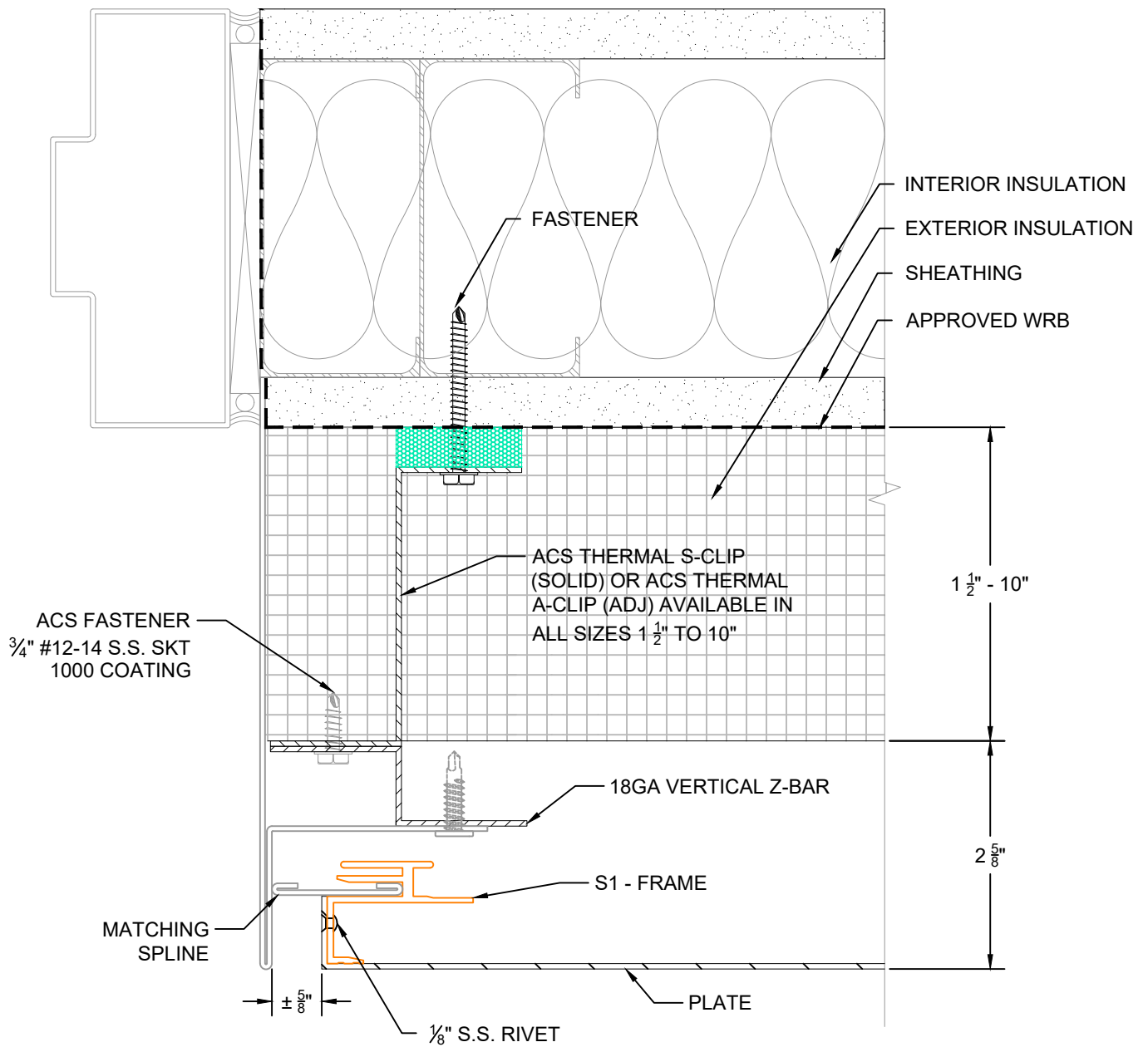
SECTION DETAILS

1. BASE
2. DOOR JAMB
- 3A. FLANGE WINDOW JAMB
- 3B. PUNCH WINDOW JAMB
- 3C. CURTAIN WALL WINDOW JAMB
4. TYPICAL VERTICAL
5. OUTSIDE CORNER
6. DOOR HEAD
- 7A. FLANGE WINDOW HEAD
- 7B. PUNCH WINDOW HEAD
- 7C. CURTAIN WALL WINDOW HEAD
8. TYPICAL HORIZONTAL
- 9A. FLANGE WINDOW SILL
- 9B. PUNCH WINDOW SILL
- 9C. CURTAIN WALL WINDOW SILL
10. PARAPET CAP
11. VERTICAL END
12. INSIDE CORNER
13. TYPICAL SOFFIT

DWG BY KAW	PROJECT NAME	PAGE DESCRIPTION	 <p>ACS Composite Systems Inc. 35 - 7450 Butler Road Saskatoon, SK S0T 1B1 (778) 392-1015 info@acscompositesystems.com www.acscompositesystems.com</p>
DATE SUBMITTED SEPTEMBER 2021		<h2>ELEVATION OF TYPICAL DETAILS</h2>	
REVISIONS NO. _____ DATE _____ NO. _____ DATE _____ NO. _____ DATE _____ NO. _____ DATE _____	NOT TO SCALE		



DETAIL <



DETAIL

2

DWG BY

KAW

DATE SUBMITTED

SEPTEMBER 2021

REVISIONS

NO. DATE

NO. DATE

NO. DATE

NO. DATE

PROJECT NAME

NOT TO SCALE

PAGE DESCRIPTION

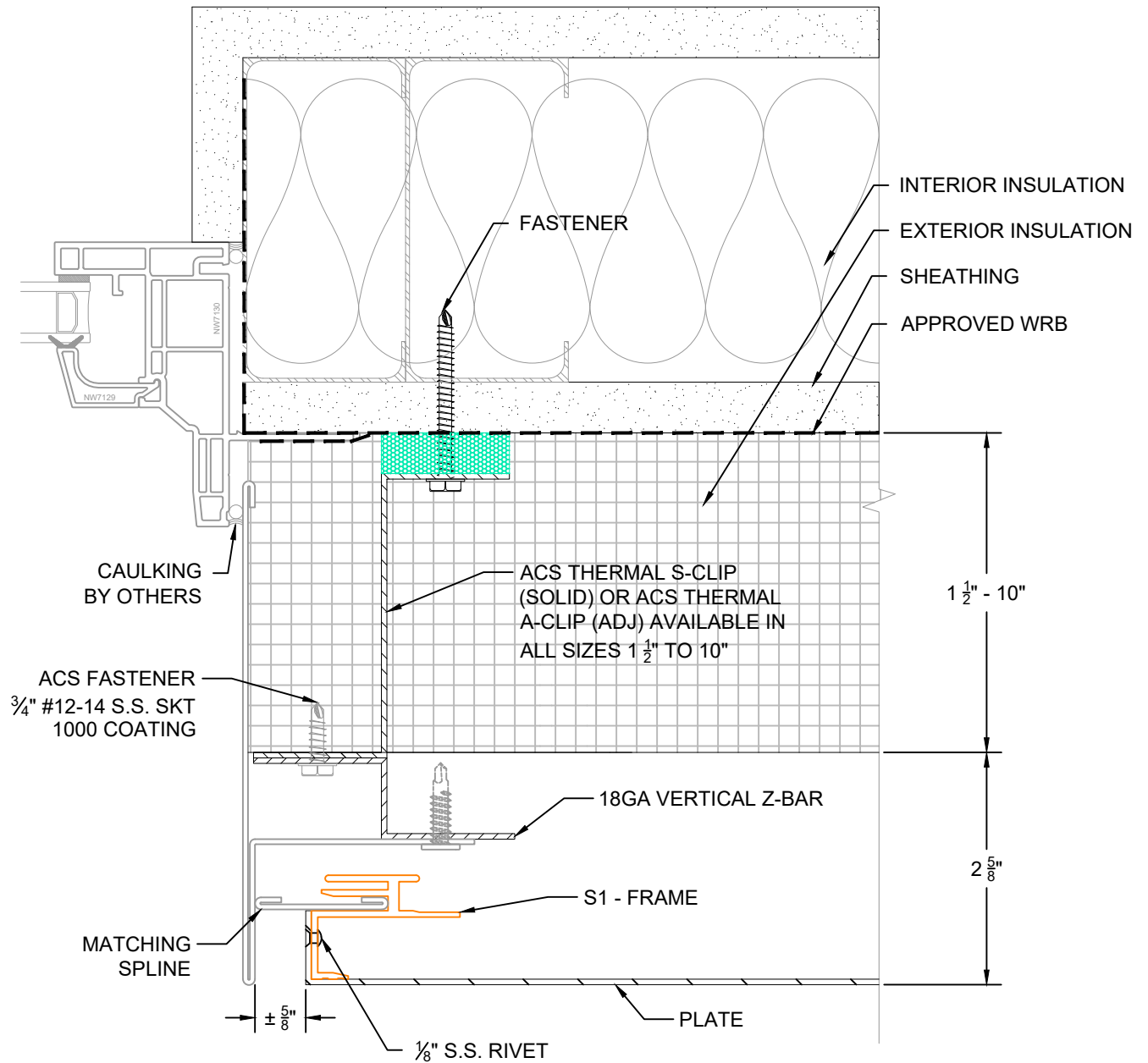
STANDARD DETAILS DOOR JAMB

THESE DRAWINGS ARE THE SOLE PROPERTY OF ACS COMPOSITE SYSTEMS AND MAY ONLY BE REPRODUCED UPON RECEIPT OF WRITTEN PERMISSION FROM ACS COMPOSITE SYSTEMS INC.

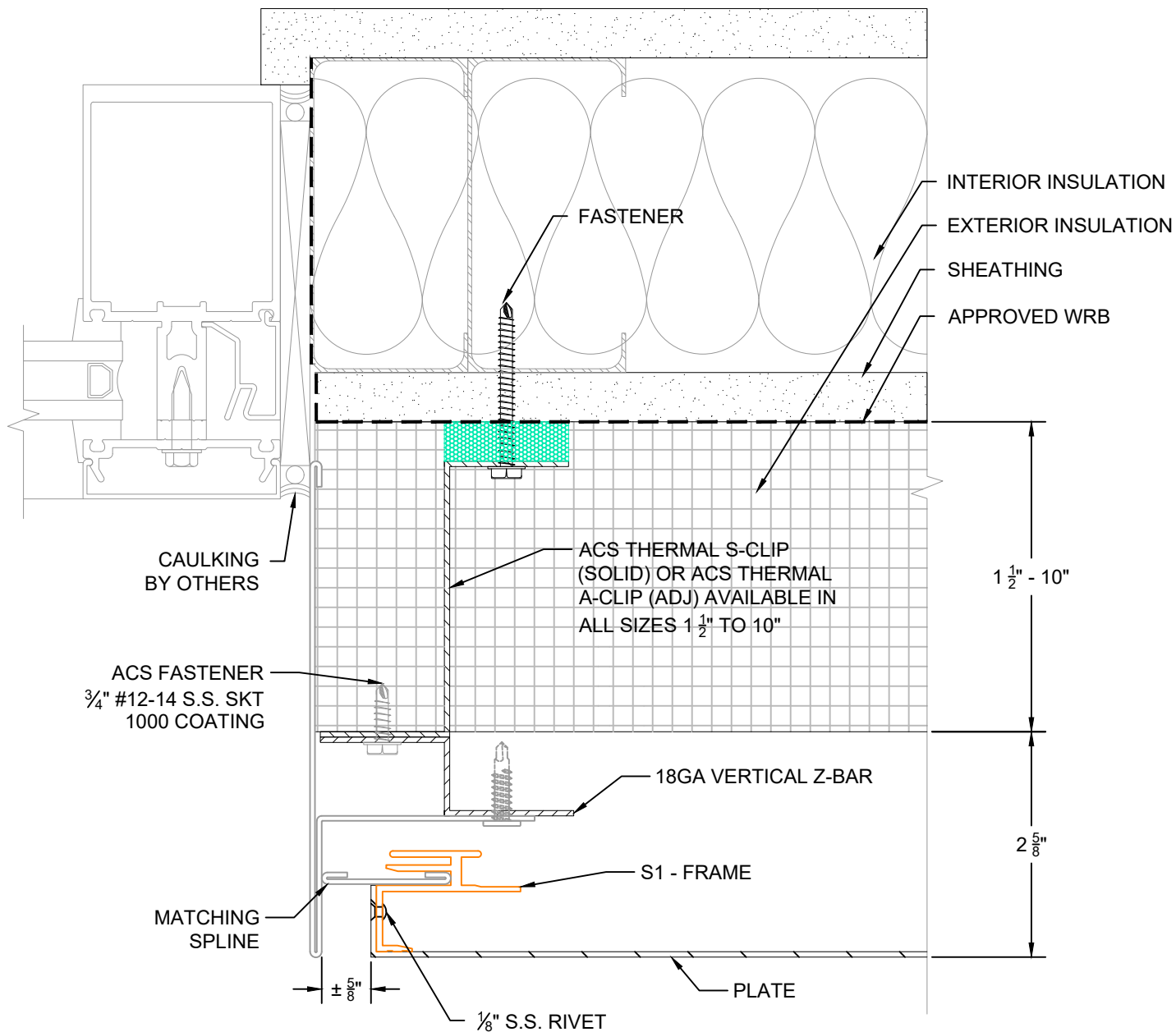


35 - 7450 Butler Road
Saville, NC 28781
(770) 352-1015
info@acscompositesystems.com

www.acscompositesystems.com



DETAIL
--



DETAIL

DWG BY

KAW

DATE SUBMITTED

SEPTEMBER 2021

REVISIONS

NO. DATE

NO. DATE

NO. DATE

NO. DATE

PROJECT NAME

NOT TO SCALE

PAGE DESCRIPTION

STANDARD DETAILS PUNCH WINDOW JAMB

THESE DRAWINGS ARE THE SOLE PROPERTY OF ACS COMPOSITE SYSTEMS AND MAY ONLY BE REPRODUCED UPON RECEIPT OF WRITTEN PERMISSION FROM ACS COMPOSITE SYSTEMS INC.

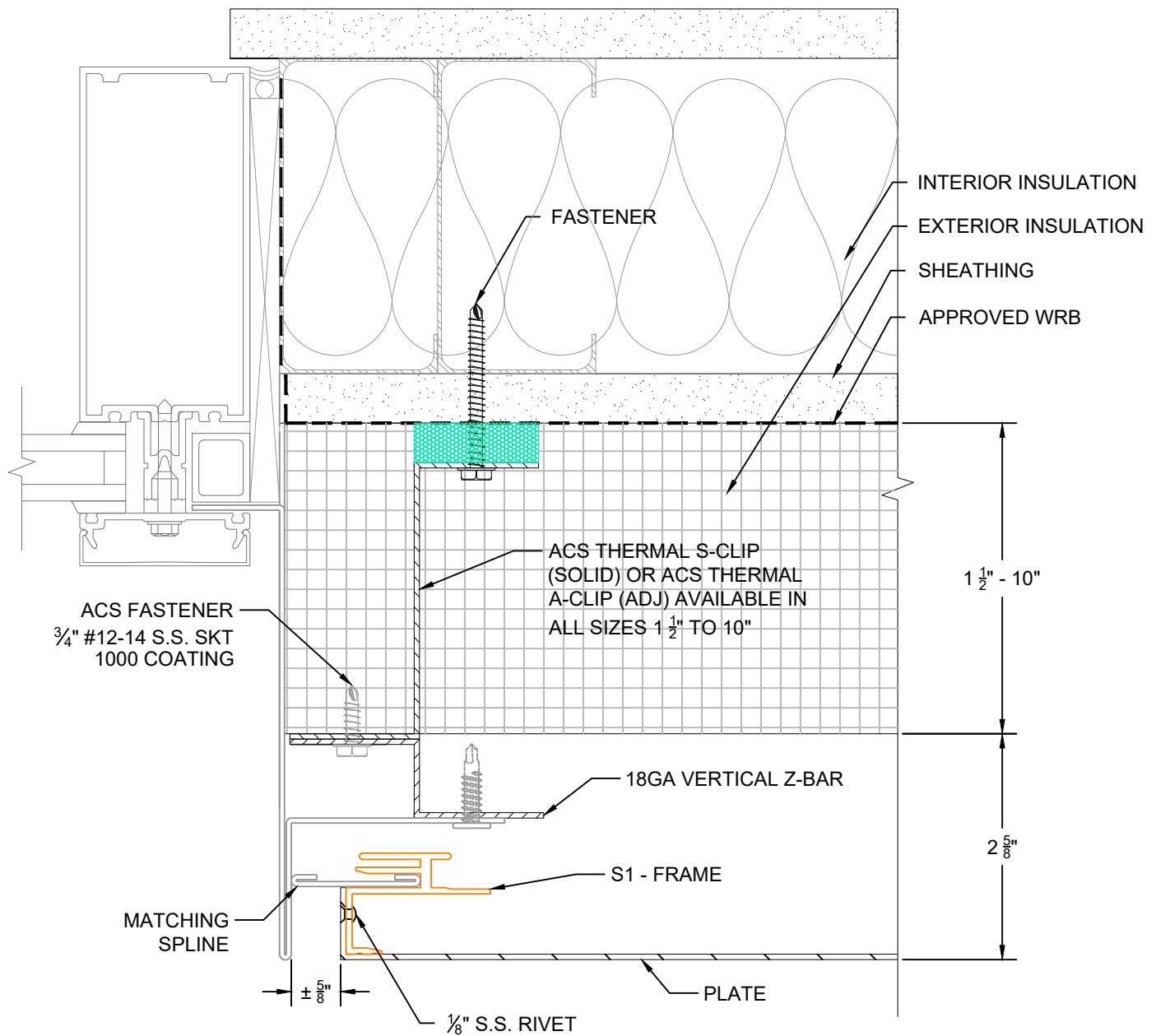



Composite Systems Inc.

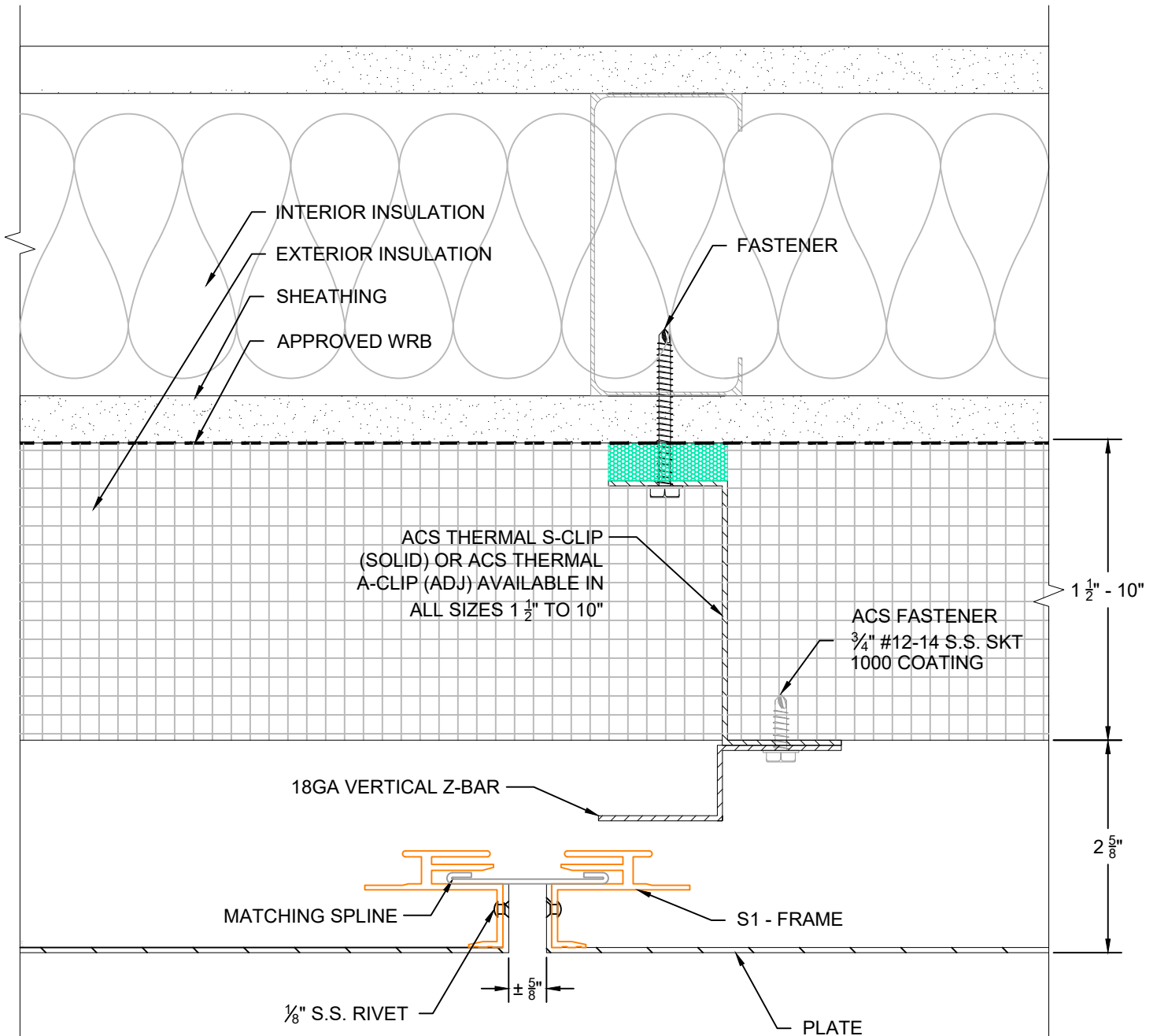
35 - 7450 Butler Road
Saville, NC 28581
(770) 352-1015
info@acscompositesystems.com


www.acscompositesystems.com

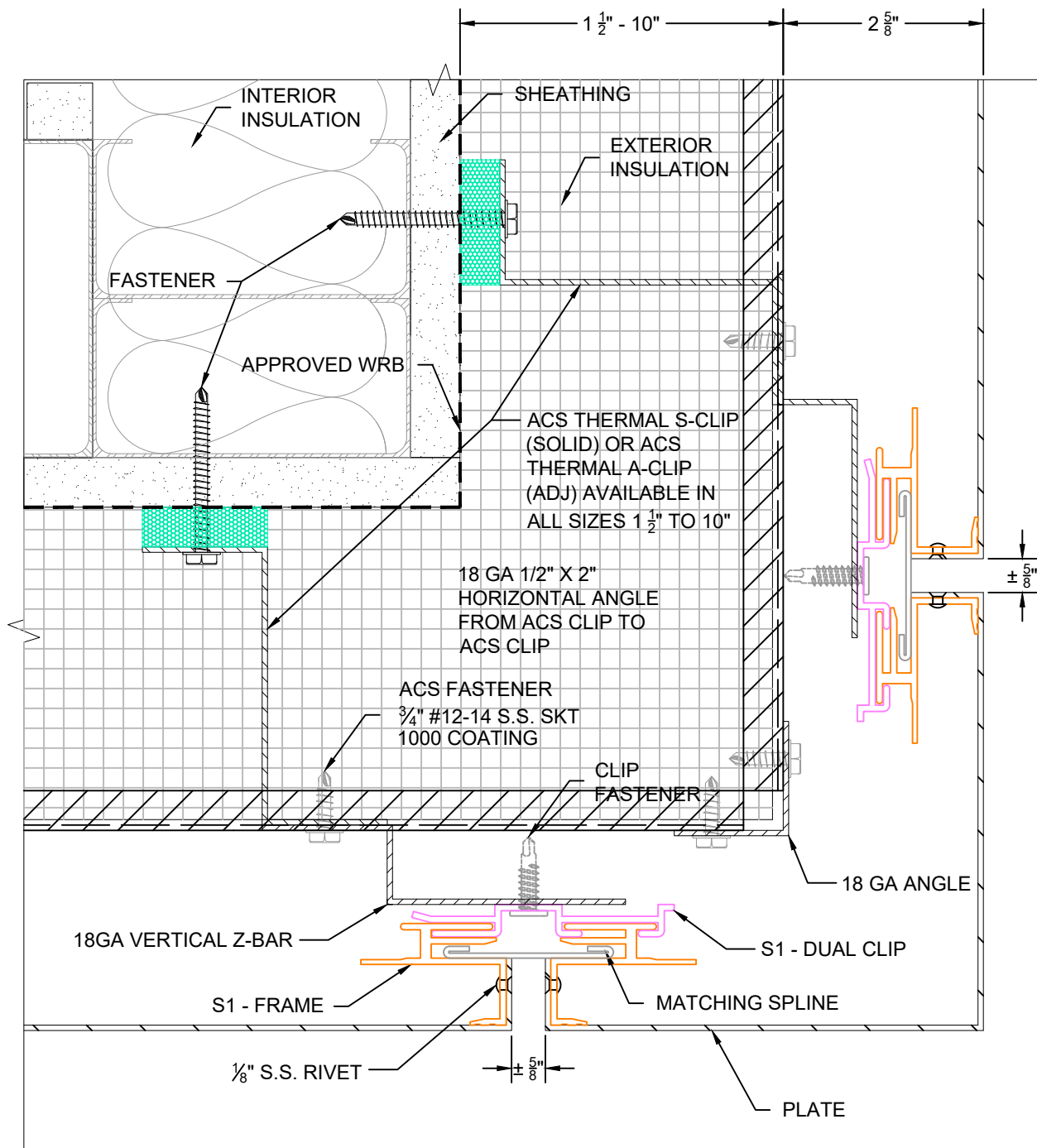
3B



<p>DETAIL</p> <p>3C</p>	<p>DWG BY KAW</p> <p>DATE SUBMITTED SEPTEMBER 2021</p> <p>REVISIONS</p> <p>NO. _____ DATE _____</p> <p>NO. _____ DATE _____</p> <p>NO. _____ DATE _____</p>	<p>PROJECT NAME</p> <p>NOT TO SCALE</p>	<p>PAGE DESCRIPTION</p> <p>STANDARD DETAILS CURTAIN WALL WINDOW JAMB</p> <p>THESE DRAWINGS ARE THE SOLE PROPERTY OF ACS COMPOSITE SYSTEMS AND MAY ONLY BE REPRODUCED UPON RECEIPT OF WRITTEN PERMISSION FROM ACS COMPOSITE SYSTEMS INC.</p>	<p> Composite Systems Inc. 35 - 7450 Butler Road Scotts, NC 27571 (778) 352-1015 info@acscompositesystems.com www.acscompositesystems.com</p>	
--------------------------------	---	---	---	--	--



<p>DETAIL</p> <p>4</p>	<p>DWG BY KAW</p> <p>DATE SUBMITTED SEPTEMBER 2021</p> <p>REVISIONS</p> <p>NO. DATE</p> <p>NO. DATE</p> <p>NO. DATE</p> <p>NO. DATE</p>	<p>PROJECT NAME</p> <p>NOT TO SCALE</p>	<p>PAGE DESCRIPTION</p> <p>STANDARD DETAILS</p> <p>TYPICAL VERTICAL</p> <p>THESE DRAWINGS ARE THE SOLE PROPERTY OF ACS COMPOSITE SYSTEMS AND MAY ONLY BE REPRODUCED UPON RECEIPT OF WRITTEN PERMISSION FROM ACS COMPOSITE SYSTEMS INC.</p>	<p></p> <p>35 - 7450 Butler Road Saville, NC 28581 (770) 352-1015 info@acscompositesystems.com www.acscompositesystems.com</p>	
-------------------------------	---	---	--	---	--



DETAIL

5

DWG BY
KAW
DATE SUBMITTED
SEPTEMBER 2021
REVISIONS
NO. DATE
NO. DATE
NO. DATE
NO. DATE

PROJECT NAME

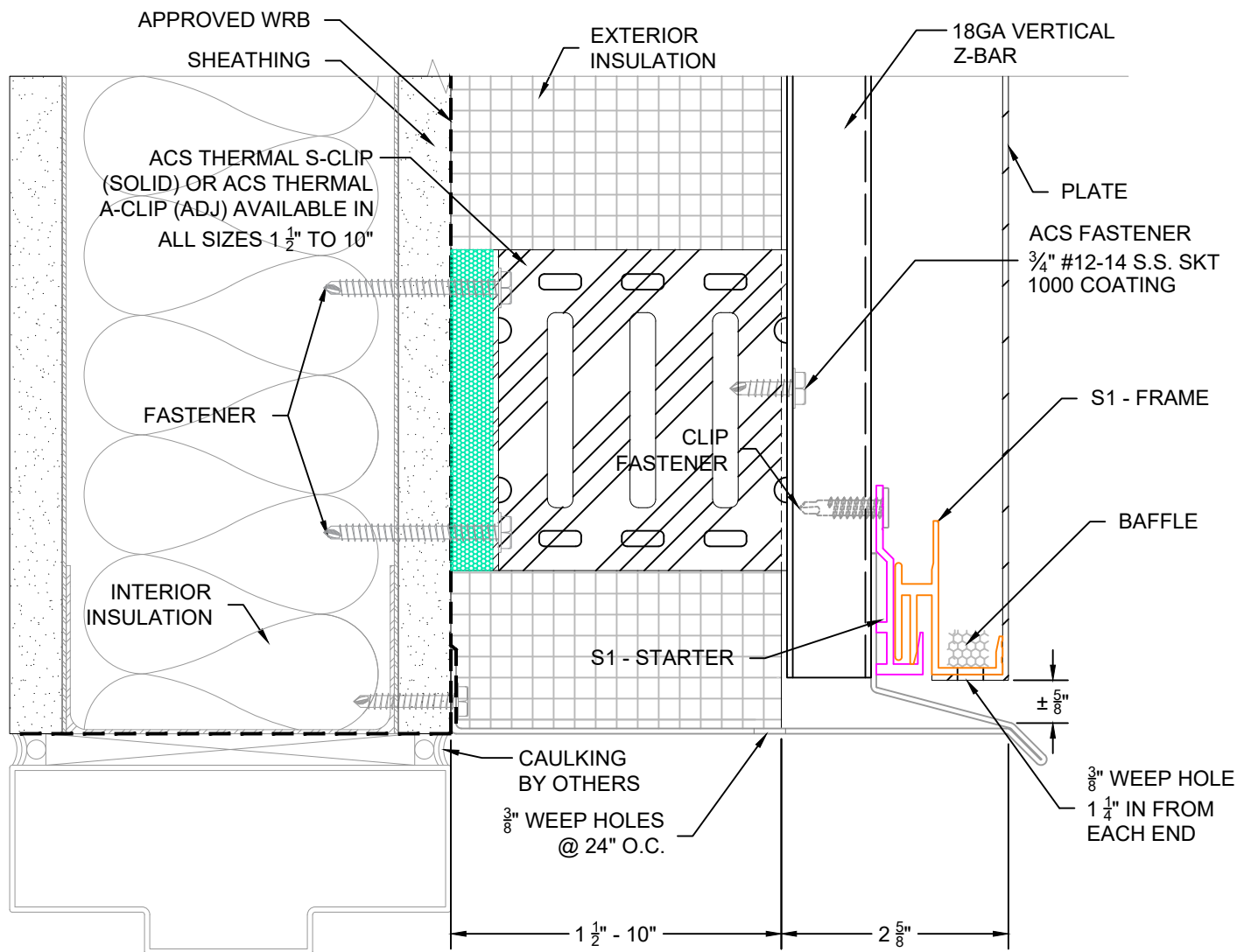
NOT TO SCALE


PAGE DESCRIPTION

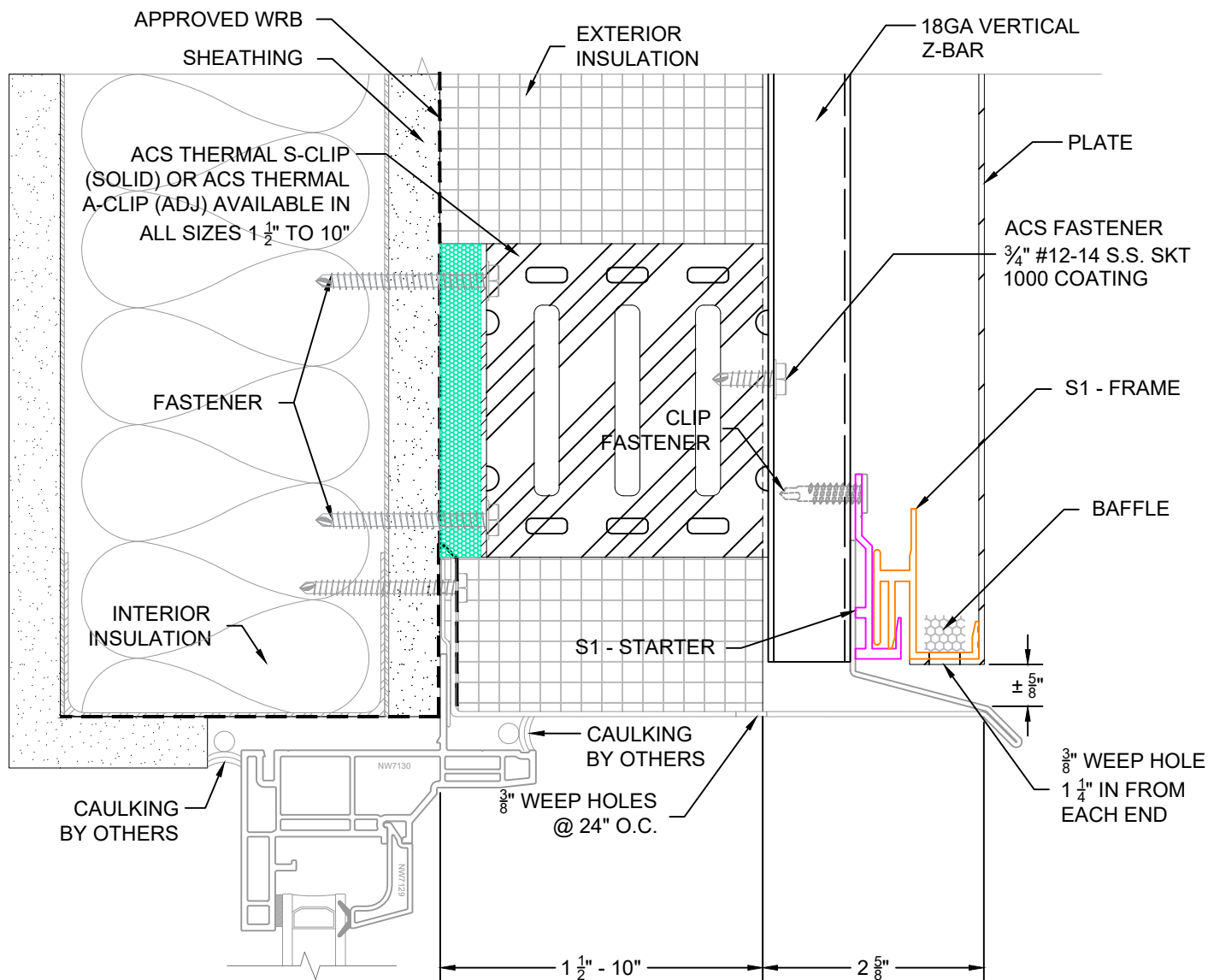
STANDARD DETAILS OUTSIDE CORNER


THESE DRAWINGS ARE THE SOLE PROPERTY OF ACS COMPOSITE SYSTEMS AND MAY ONLY BE REPRODUCED UPON RECEIPT OF WRITTEN PERMISSION FROM ACS COMPOSITE SYSTEMS INC.

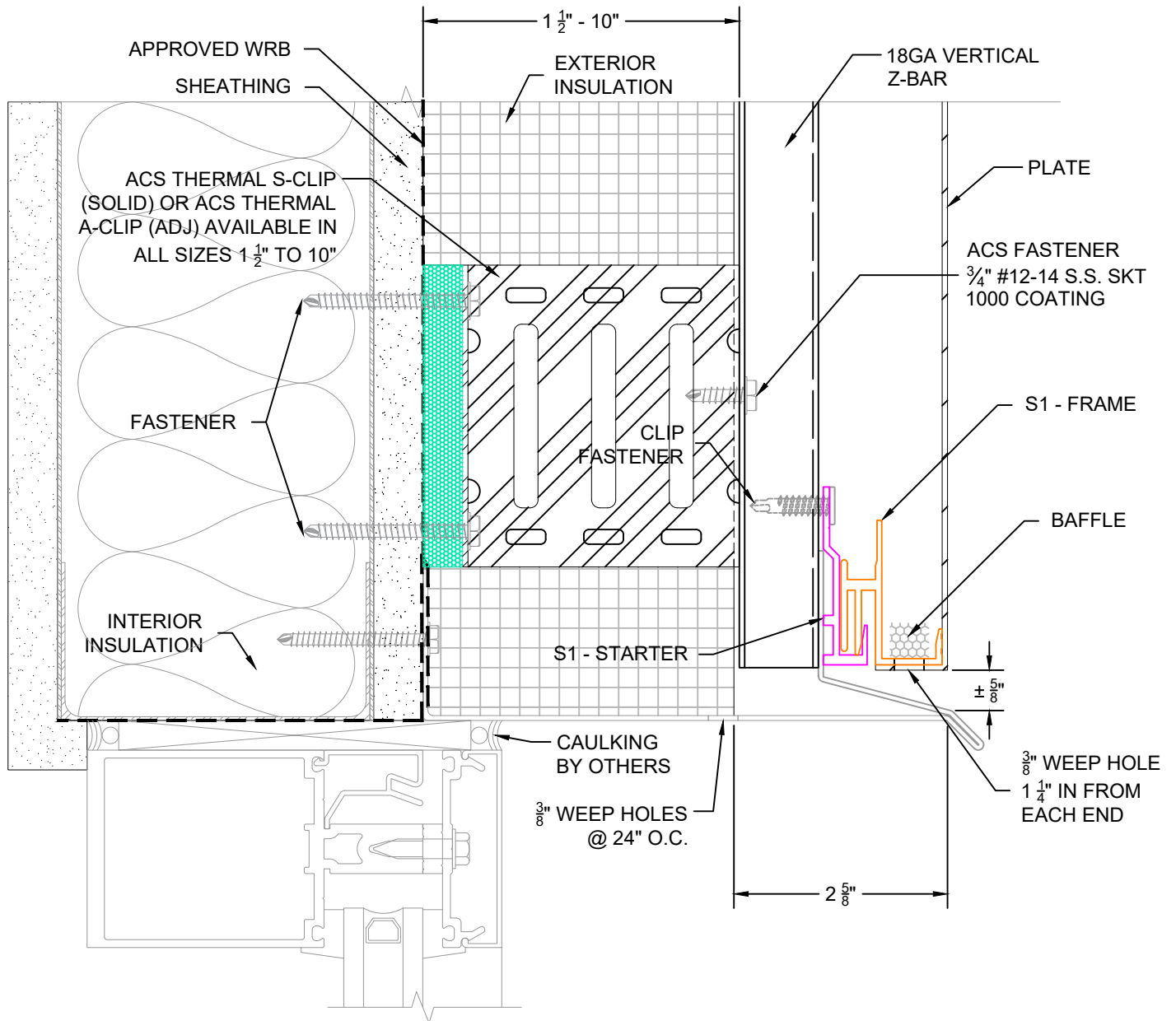
ACS
Composite Systems Inc.
35 - 7450 Butler Road
Saville, NC 28581
(770) 352-1015
info@acscompositesystems.com
www.acscompositesystems.com



<p>DETAIL</p> <p>6</p>	<p>DWG BY KAW</p> <p>DATE SUBMITTED SEPTEMBER 2021</p> <p>REVISIONS</p> <p>NO. _____ DATE _____</p> <p>NO. _____ DATE _____</p> <p>NO. _____ DATE _____</p> <p>NO. _____ DATE _____</p>	<p>PROJECT NAME</p> <p>NOT TO SCALE</p>	<p>PAGE DESCRIPTION</p> <p>STANDARD DETAILS</p> <p>DOOR HEAD</p> <p>THESE DRAWINGS ARE THE SOLE PROPERTY OF ACS COMPOSITE SYSTEMS AND MAY ONLY BE REPRODUCED UPON RECEIPT OF WRITTEN PERMISSION FROM ACS COMPOSITE SYSTEMS INC.</p>	<p> ACS Composite Systems Inc. <small>35 - 7450 Butler Road Seattle, WA 98148 (778) 383-1015 info@acscompositesystems.com</small></p> <p>www.acscompositesystems.com</p>	
-------------------------------	---	---	---	--	--



DETAIL	DWG BY KAW	PROJECT NAME	PAGE DESCRIPTION	
7A	DATE SUBMITTED SEPTEMBER 2021		STANDARD DETAILS FLANGE WINDOW HEAD	
	REVISIONS		THESE DRAWINGS ARE THE SOLE PROPERTY OF ACS COMPOSITE SYSTEMS AND MAY ONLY BE REPRODUCED UPON RECEIPT OF WRITTEN PERMISSION FROM ACS COMPOSITE SYSTEMS INC.	
	NO. _____ DATE _____ NO. _____ DATE _____ NO. _____ DATE _____	NOT TO SCALE		
			 <p>35 - 7450 Butler Road Saville, NC 28581 (770) 352-1015 info@acscompositesystems.com www.acscompositesystems.com</p>	



DETAIL

DWG BY

KAW

PROJECT NAME

PAGE DESCRIPTION

STANDARD DETAILS PUNCH WINDOW HEAD

THESE DRAWINGS ARE THE SOLE PROPERTY OF ACS COMPOSITE SYSTEMS AND MAY ONLY BE REPRODUCED UPON RECEIPT OF WRITTEN PERMISSION FROM ACS COMPOSITE SYSTEMS INC.



35 - 7450 Butler Road
Saville, NC 28581
(770) 383-1015
info@acscompositesystems.com

www.acscompositesystems.com

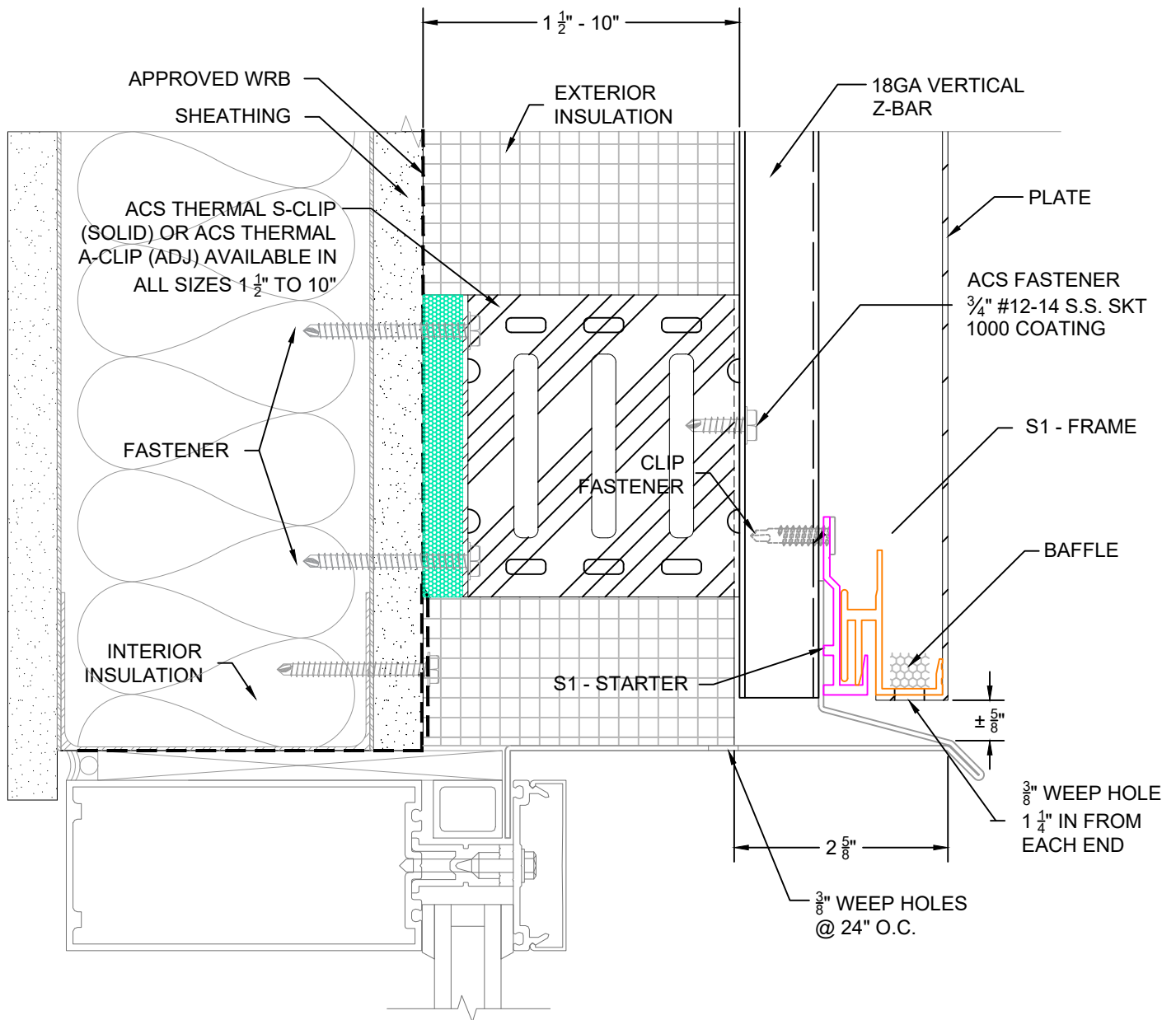
7B

DATE SUBMITTED
SEPTEMBER 2021

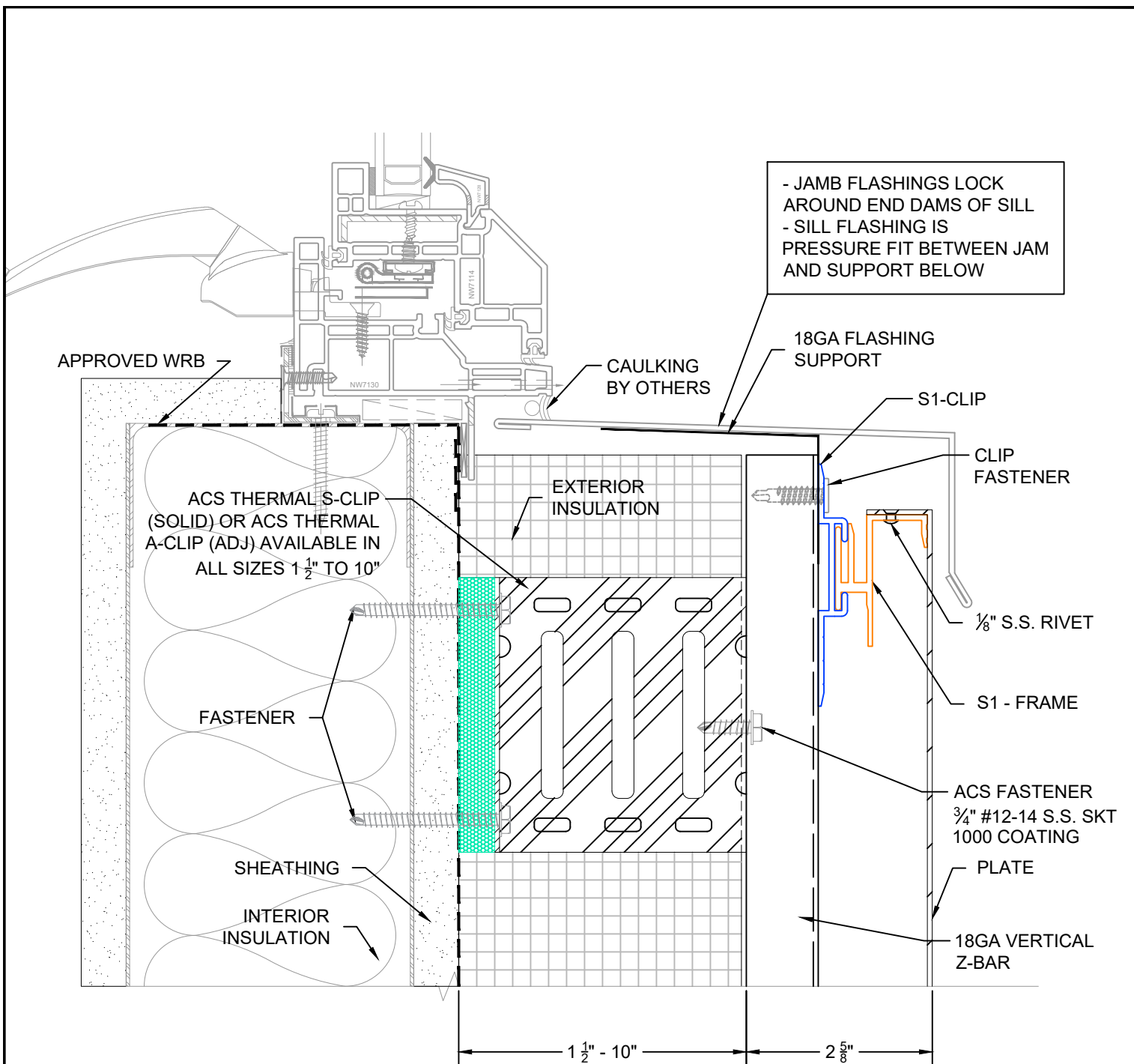
REVISIONS


NO. DATE
NO. DATE
NO. DATE
NO. DATE

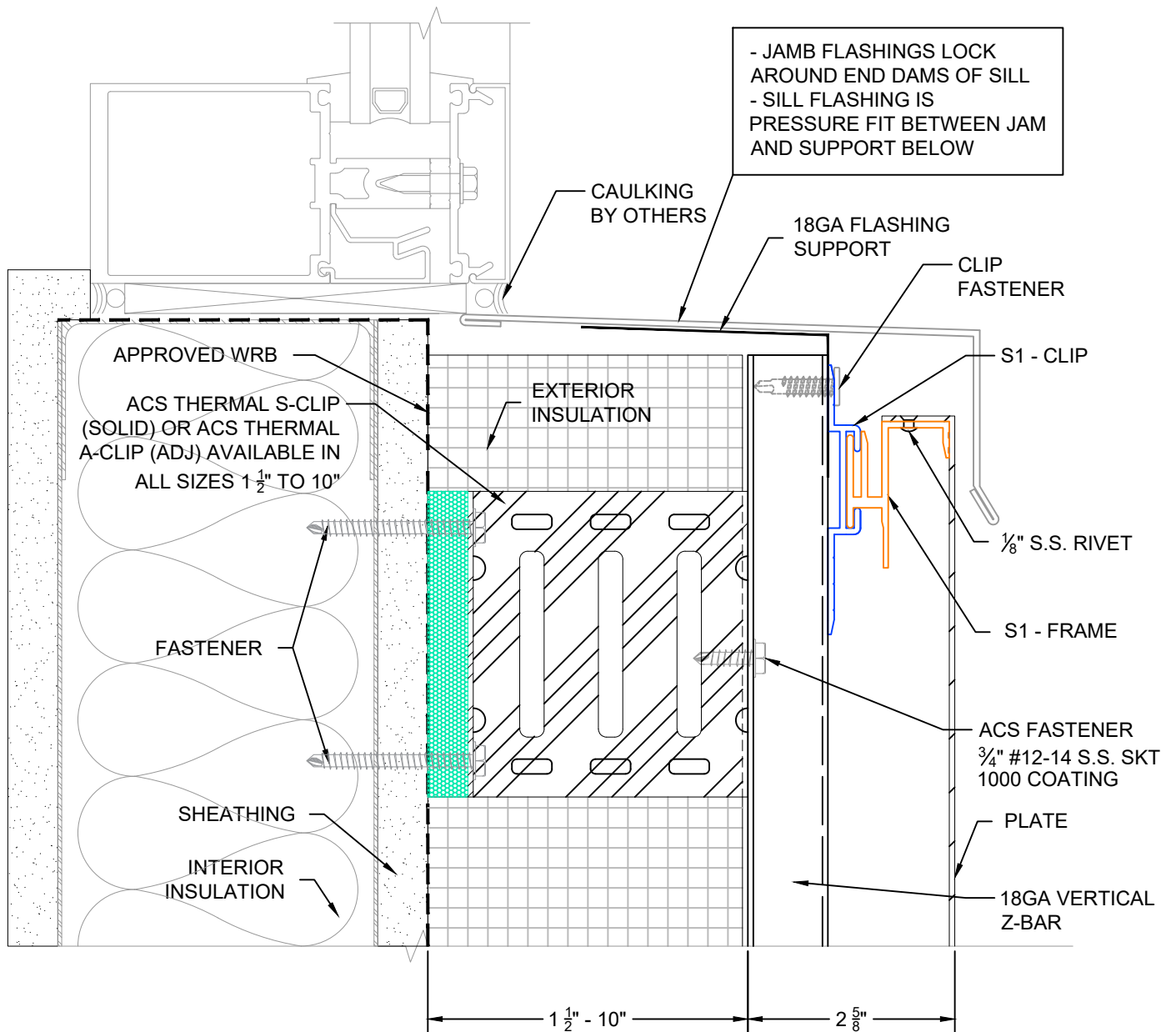
NOT TO SCALE



<p>DETAIL</p> <p>7C</p>	<p>DWG BY KAW</p> <p>DATE SUBMITTED SEPTEMBER 2021</p> <p>REVISIONS</p> <p>NO. _____ DATE _____</p> <p>NO. _____ DATE _____</p> <p>NO. _____ DATE _____</p> <p>NO. _____ DATE _____</p>	<p>PROJECT NAME</p> <p>NOT TO SCALE</p>	<p>PAGE DESCRIPTION</p> <p>STANDARD DETAILS</p> <p>CURTAIN WALL WINDOW HEAD</p> <p>THESE DRAWINGS ARE THE SOLE PROPERTY OF ACS COMPOSITE SYSTEMS AND MAY ONLY BE REPRODUCED UPON RECEIPT OF WRITTEN PERMISSION FROM ACS COMPOSITE SYSTEMS INC.</p>	<p></p> <p>35 - 7450 Butler Road Saville, NC 28581 (770) 352-1015 info@acscompositesystems.com www.acscompositesystems.com</p>	
--------------------------------	---	---	--	---	--



DETAIL	DWG BY KAW	PROJECT NAME	PAGE DESCRIPTION	 <p>Composite Systems Inc. 35 - 7450 Butler Road Seattle, WA 98148 (778) 352-1015 info@acscompositesystems.com www.acscompositesystems.com</p>
9A	DATE SUBMITTED SEPTEMBER 2021		STANDARD DETAILS FLANGE WINDOW SILL	
	REVISIONS NO. _____ DATE _____ NO. _____ DATE _____ NO. _____ DATE _____ NO. _____ DATE _____	NOT TO SCALE	THESE DRAWINGS ARE THE SOLE PROPERTY OF ACS COMPOSITE SYSTEMS AND MAY ONLY BE REPRODUCED UPON RECEIPT OF WRITTEN PERMISSION FROM ACS COMPOSITE SYSTEMS INC.	



DETAIL

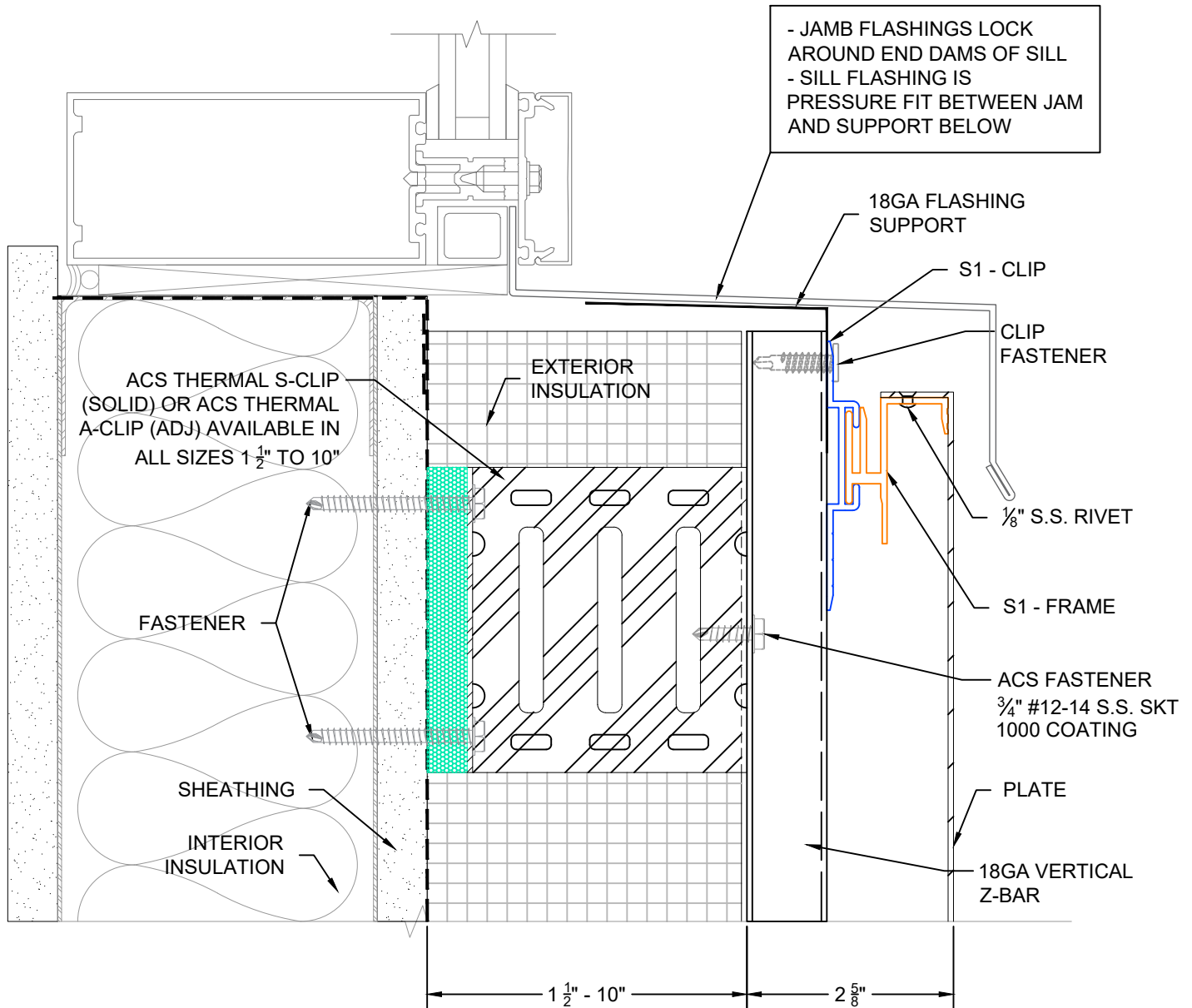
DWG BY	KAW
DATE SUBMITTED	SEPTEMBER 2021
REVISIONS	
NO. _____ DATE _____	
NO. _____ DATE _____	
NO. _____ DATE _____	
NO. _____ DATE _____	

PROJECT NAME	
NOT TO SCALE	

PAGE DESCRIPTION	
STANDARD DETAILS PUNCH WINDOW SILL	
THESE DRAWINGS ARE THE SOLE PROPERTY OF ACS COMPOSITE SYSTEMS AND MAY ONLY BE REPRODUCED UPON RECEIPT OF WRITTEN PERMISSION FROM ACS COMPOSITE SYSTEMS INC.	

ACS
 Composite Systems Inc.
 35 - 7450 Butler Road
 Seattle, WA 98148
 (778) 383-1015
 info@acscompositesystems.com
 www.acscompositesystems.com

9B



DETAIL

DWG BY

KAW

PROJECT NAME

PAGE DESCRIPTION

STANDARD DETAILS CURTAIN WALL WINDOW SILL

THESE DRAWINGS ARE THE SOLE PROPERTY OF ACS COMPOSITE SYSTEMS AND MAY ONLY BE REPRODUCED UPON RECEIPT OF WRITTEN PERMISSION FROM ACS COMPOSITE SYSTEMS INC.



35 - 7450 Butler Road
 Seattle, WA 98148
 (778) 352-1015
 info@acscompositesystems.com
 www.acscompositesystems.com

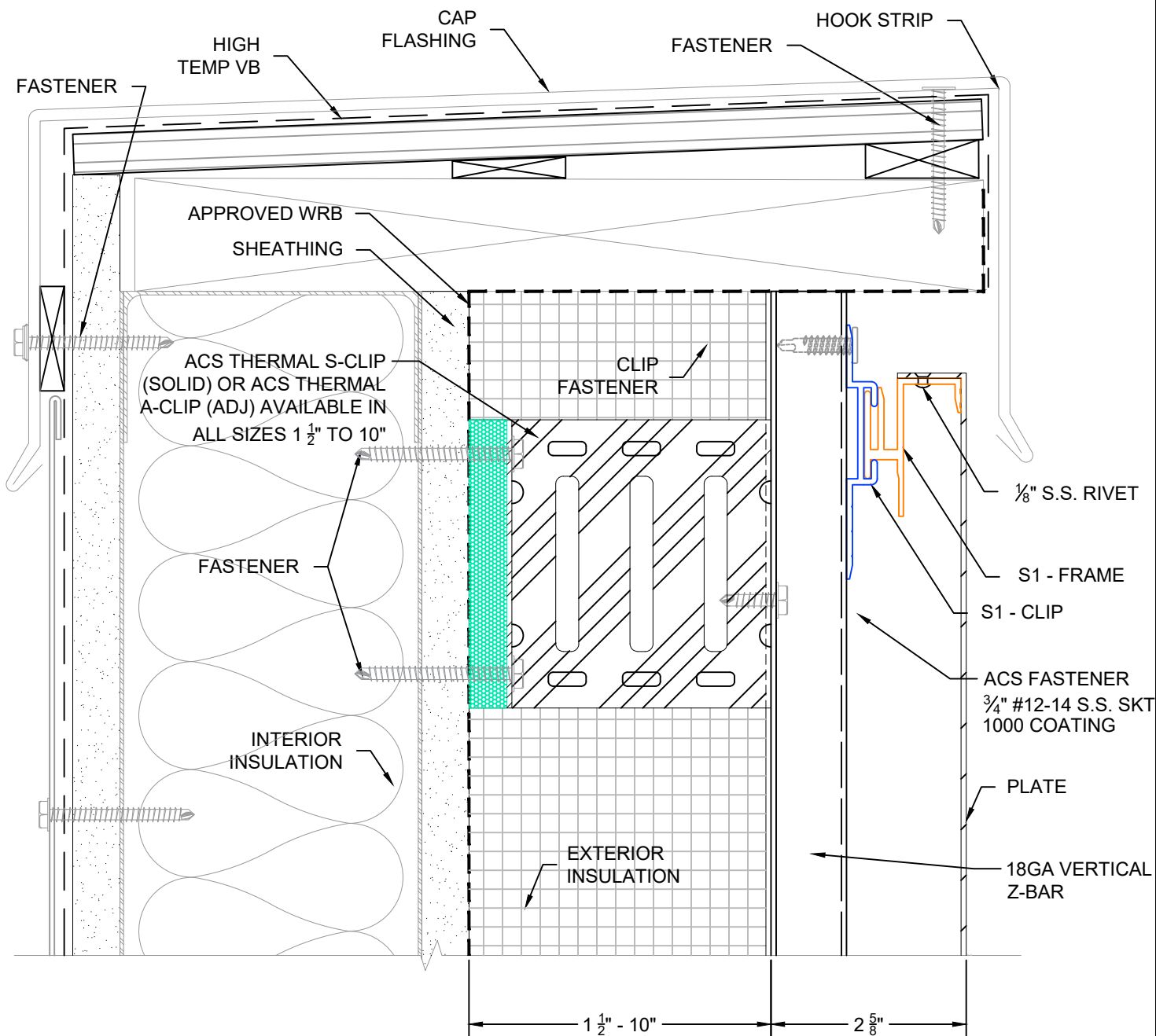
9C

DATE SUBMITTED
SEPTEMBER 2021

REVISIONS

NO. DATE
 NO. DATE
 NO. DATE
 NO. DATE

NOT TO SCALE



DETAIL

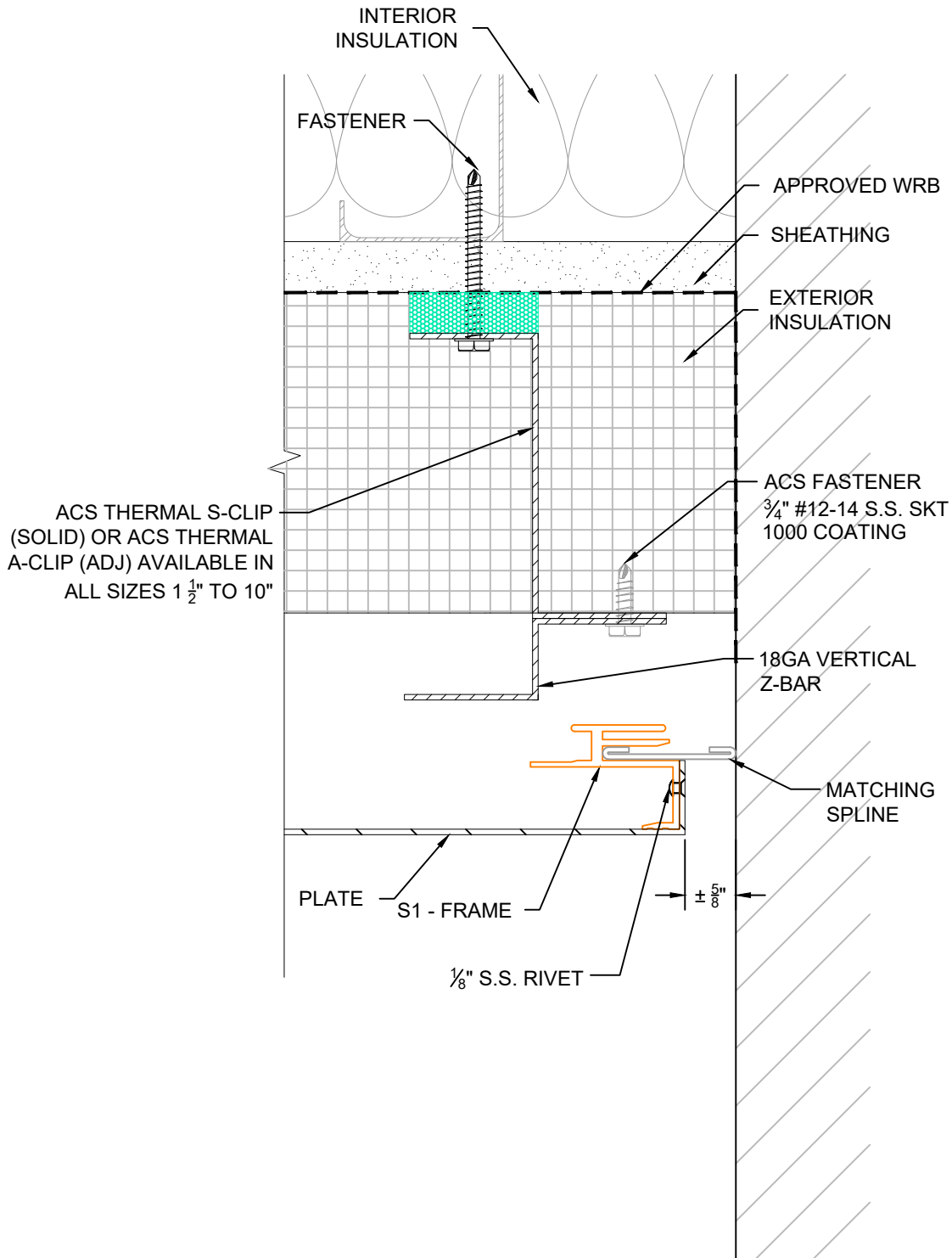
10

DWG BY	KAW
DATE SUBMITTED	SEPTEMBER 2021
REVISIONS	
NO. DATE	
NO. DATE	
NO. DATE	
NO. DATE	

PROJECT NAME	
NOT TO SCALE	

PAGE DESCRIPTION	
STANDARD DETAILS PARAPET CAP	
THESE DRAWINGS ARE THE SOLE PROPERTY OF ACS COMPOSITE SYSTEMS AND MAY ONLY BE REPRODUCED UPON RECEIPT OF WRITTEN PERMISSION FROM ACS COMPOSITE SYSTEMS INC.	





DETAIL

DWG BY

KAW

DATE SUBMITTED

SEPTEMBER 2021

REVISIONS

NO. DATE
NO. DATE
NO. DATE
NO. DATE

PROJECT NAME

NOT TO SCALE

PAGE DESCRIPTION

STANDARD DETAILS VERTICAL END

THESE DRAWINGS ARE THE SOLE PROPERTY OF ACS COMPOSITE SYSTEMS AND MAY ONLY BE REPRODUCED UPON RECEIPT OF WRITTEN PERMISSION FROM ACS COMPOSITE SYSTEMS INC.

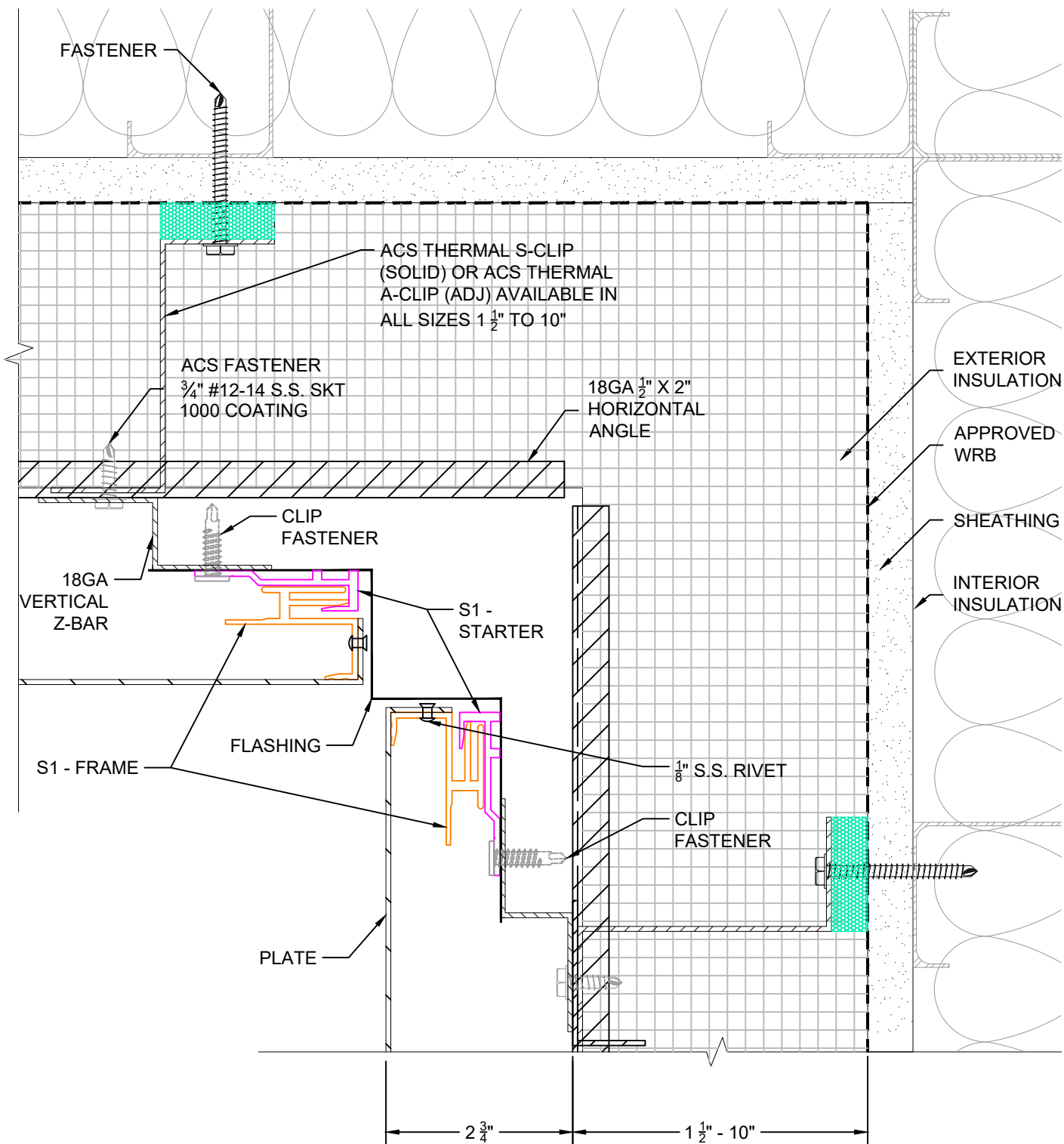


35 - 7450 Butler Road
Saville, NC 28581
(770) 352-1015

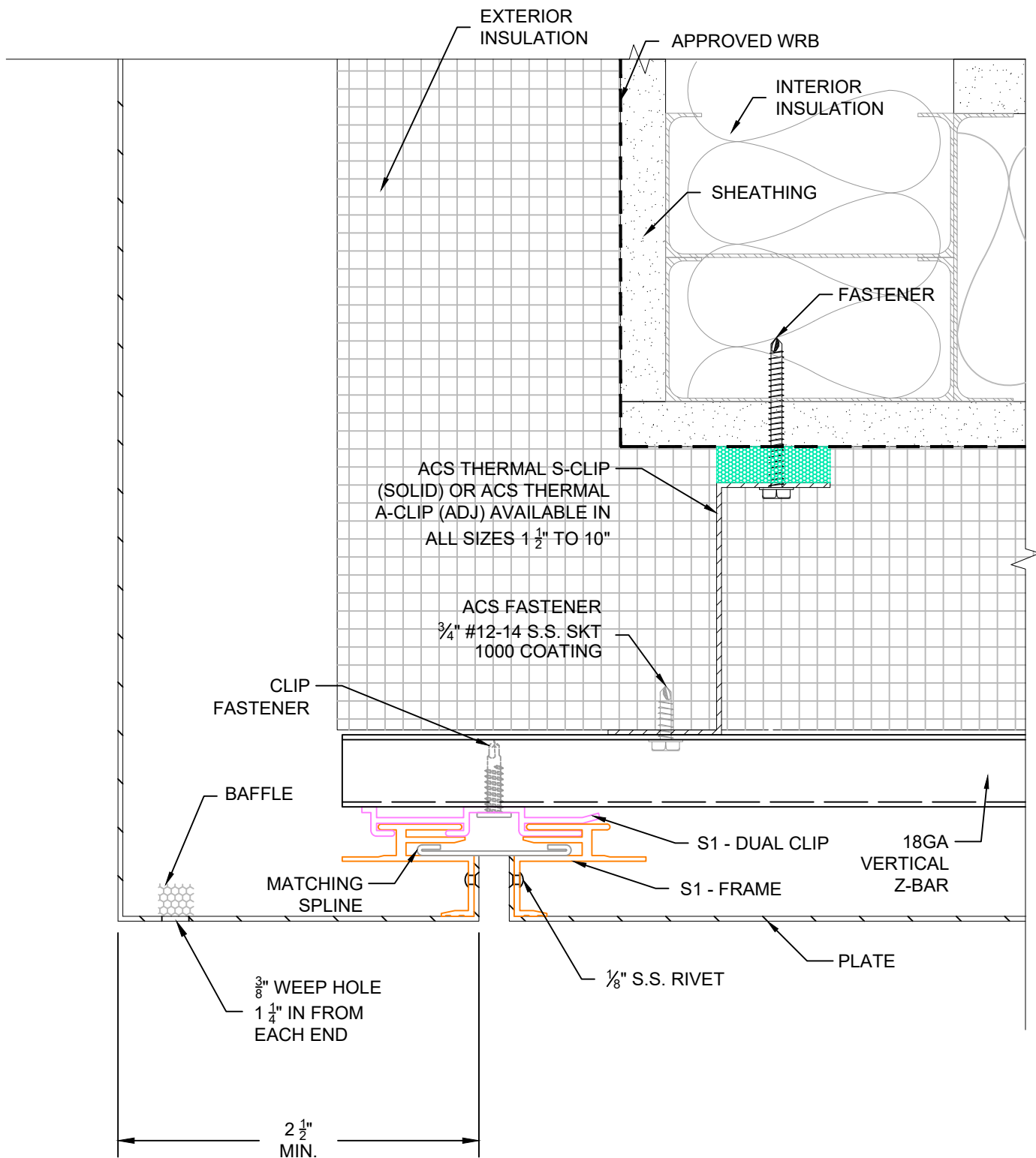
info@acscompositesystems.com

www.acscompositesystems.com

11



DETAIL <



DETAIL

13

DWG BY	KAW
DATE SUBMITTED	SEPTEMBER 2021
REVISIONS	
NO. DATE	
NO. DATE	
NO. DATE	
NO. DATE	

PROJECT NAME	
NOT TO SCALE	

PAGE DESCRIPTION	STANDARD DETAILS TYPICAL SOFFIT
THESE DRAWINGS ARE THE SOLE PROPERTY OF ACS COMPOSITE SYSTEMS AND MAY ONLY BE REPRODUCED UPON RECEIPT OF WRITTEN PERMISSION FROM ACS COMPOSITE SYSTEMS INC.	

