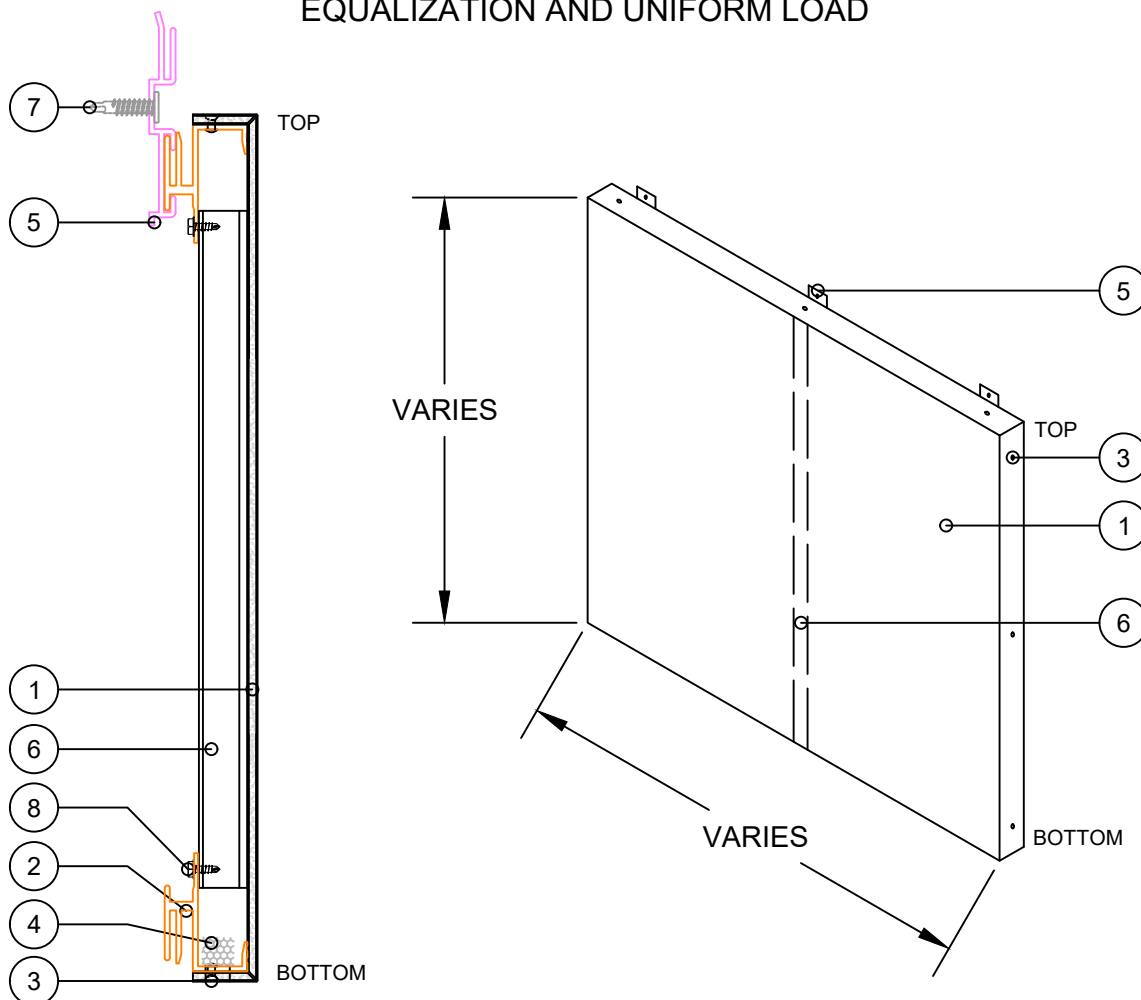


ACS COMPOSITE SYSTEMS INC.

ACP SYSTEMS - 1

CERTIFIED TO INTERTEKS LISTING PROGRAM, SPEC ID - 55964
 CODE COMPLIANT TO: **CAN/ULC-S134:13** STANDARD METHOD OF FIRE TEST OF
 EXTERIOR WALL ASSEMBLIES, **AAMA 508-14** AND **ASTM E330/E330M-14** PRESSURE
 EQUALIZATION AND UNIFORM LOAD



LIST OF MATERIALS

1. 4MM STACBOND FR CORE ACM
2. S1 - FRAME (ALUMINUM)
3. $\frac{1}{8}$ " S.S. RIVET
4. WEEP HOLE $\frac{3}{8}$ " WITH BAFFLE

5. S1 - DUAL CLIP (ALUMINUM)
6. S1 - STIFFENER (ALUMINUM)
7. #10 - $\frac{3}{4}$ " SCREW DT-2000 COATING
8. #10 - $\frac{1}{2}$ " SCREW DT-2000 COATING

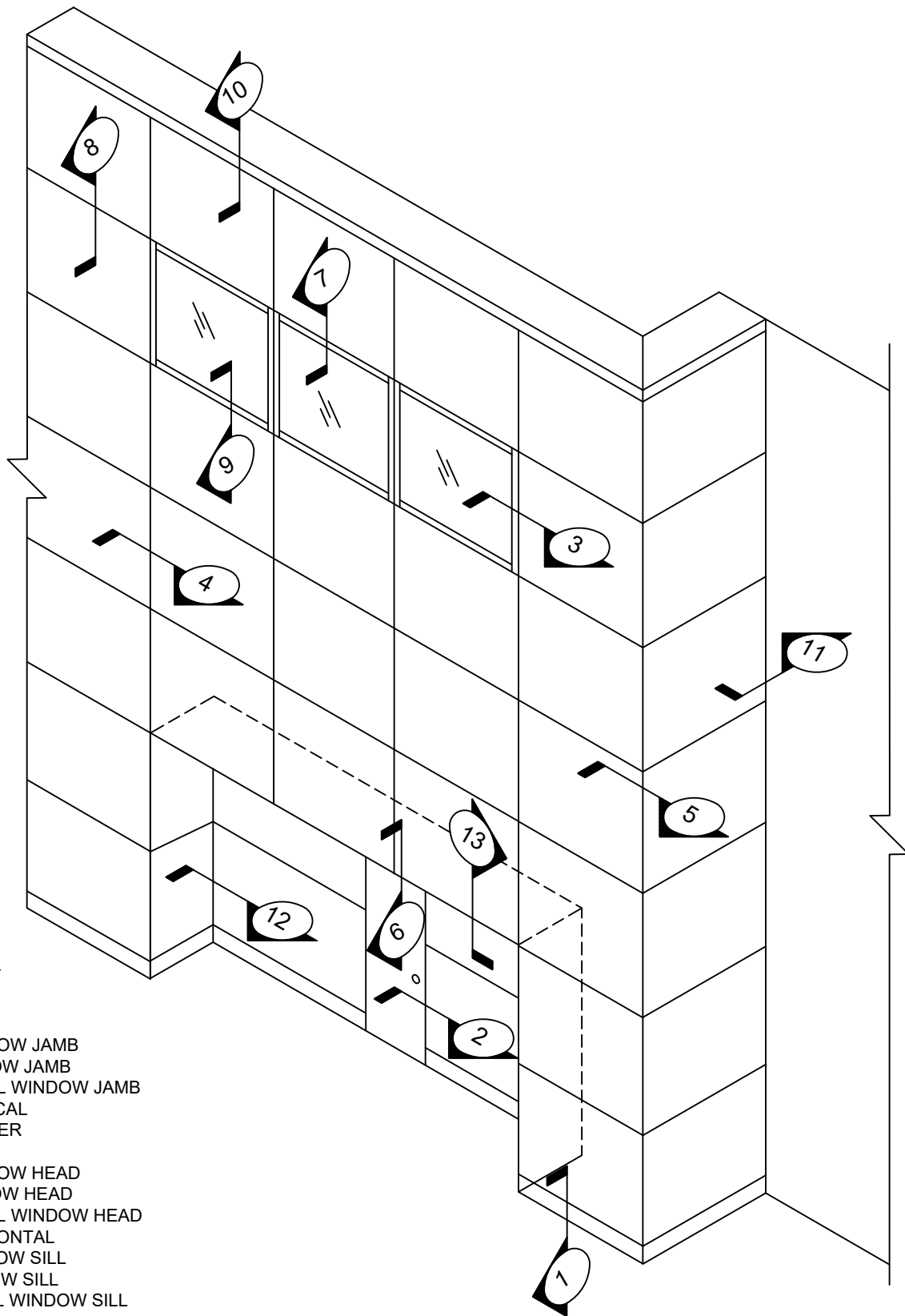
| | |
|----------------------|----------------|
| DWG BY | KAW |
| DATE SUBMITTED | SEPTEMBER 2021 |
| REVISIONS | |
| NO. _____ DATE _____ | |
| NO. _____ DATE _____ | |
| NO. _____ DATE _____ | |
| NO. _____ DATE _____ | |

| | |
|--------------|--|
| PROJECT NAME | |
| NOT TO SCALE | |

| | |
|------------------|---|
| PAGE DESCRIPTION | ISOMETRIC AND CUT THROUGH VIEW OF PANELS |
|------------------|---|

| | |
|--|--|
|  ACS Composite Systems Inc. <small>35 - 7450 Butler Road Seattle, BC V5C 3H5 (778) 332-1015 info@acscompositesystems.com</small> | www.acscompositesystems.com |
|--|--|

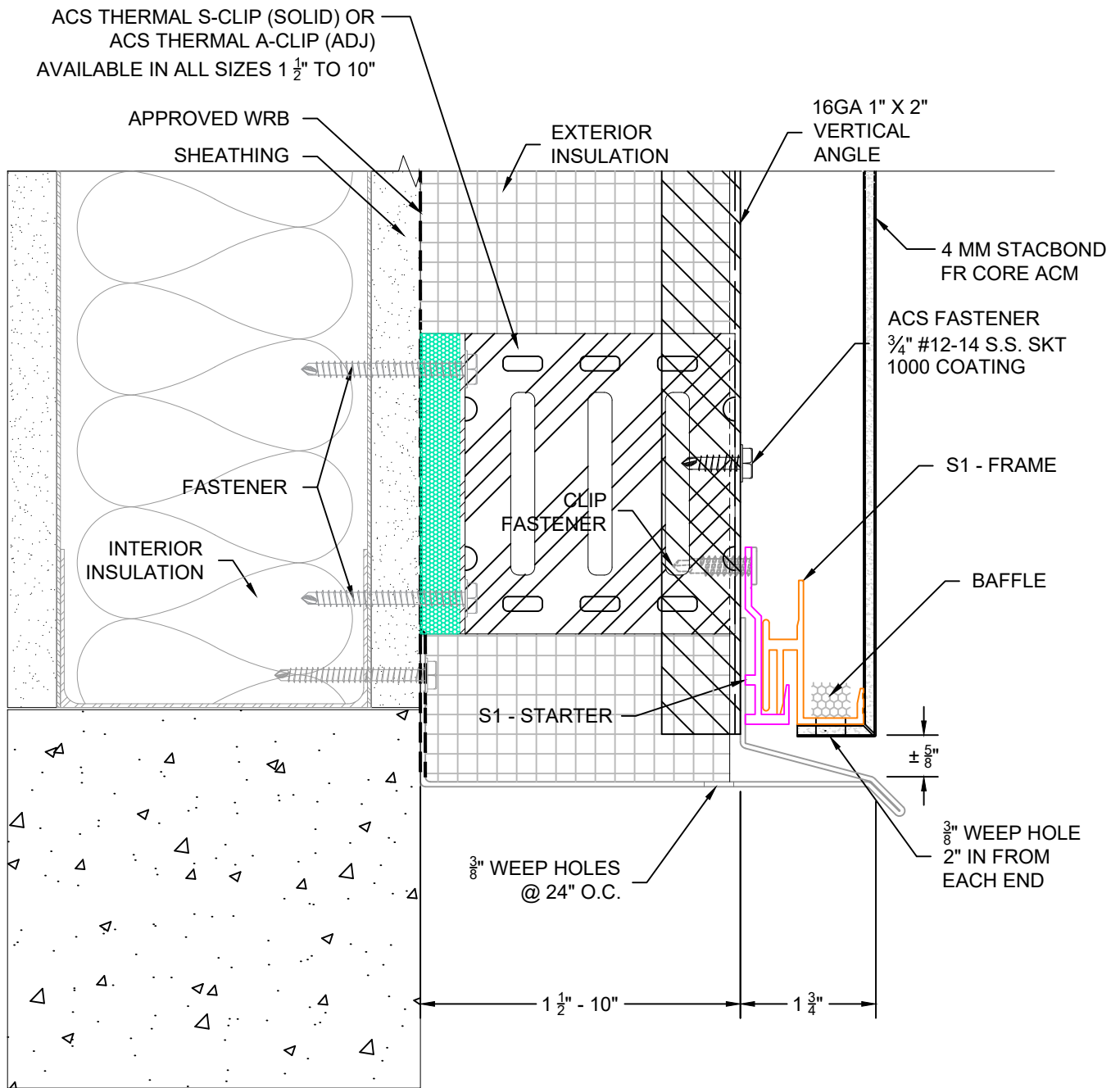
| |
|--|
|  STACBOND www.stacbond.es |
|--|



SECTION DETAILS

1. BASE
2. DOOR JAMB
- 3A. FLANGE WINDOW JAMB
- 3B. PUNCH WINDOW JAMB
- 3C. CURTAIN WALL WINDOW JAMB
4. TYPICAL VERTICAL
5. OUTSIDE CORNER
6. DOOR HEAD
- 7A. FLANGE WINDOW HEAD
- 7B. PUNCH WINDOW HEAD
- 7C. CURTAIN WALL WINDOW HEAD
8. TYPICAL HORIZONTAL
- 9A. FLANGE WINDOW SILL
- 9B. PUNCH WINDOW SILL
- 9C. CURTAIN WALL WINDOW SILL
10. PARAPET CAP
11. VERTICAL END
12. INSIDE CORNER
13. TYPICAL SOFFIT

| | | | | |
|---|--------------|---------------------------------|--|---|
| DWG BY KAW | PROJECT NAME | PAGE DESCRIPTION |  ACS Composite Systems Inc. 35 - 7450 Butler Road Bosque, BC V1C 2Y1 (778) 332-1015 info@acscompositesystems.com www.acscompositesystems.com | STAC BOND www.stacbond.es |
| DATE SUBMITTED SEPTEMBER 2021 | | ELEVATION OF TYPICAL DETAILS | | |
| REVISIONS NO. _____ DATE _____ NO. _____ DATE _____ NO. _____ DATE _____ NO. _____ DATE _____ | NOT TO SCALE | | | |



DETAIL

1

DWG BY

KAW

DATE SUBMITTED

SEPTEMBER 2021

REVISIONS

NO. DATE

NO. DATE

NO. DATE

NO. DATE

PROJECT NAME

NOT TO SCALE

PAGE DESCRIPTION

STANDARD DETAILS

BASE

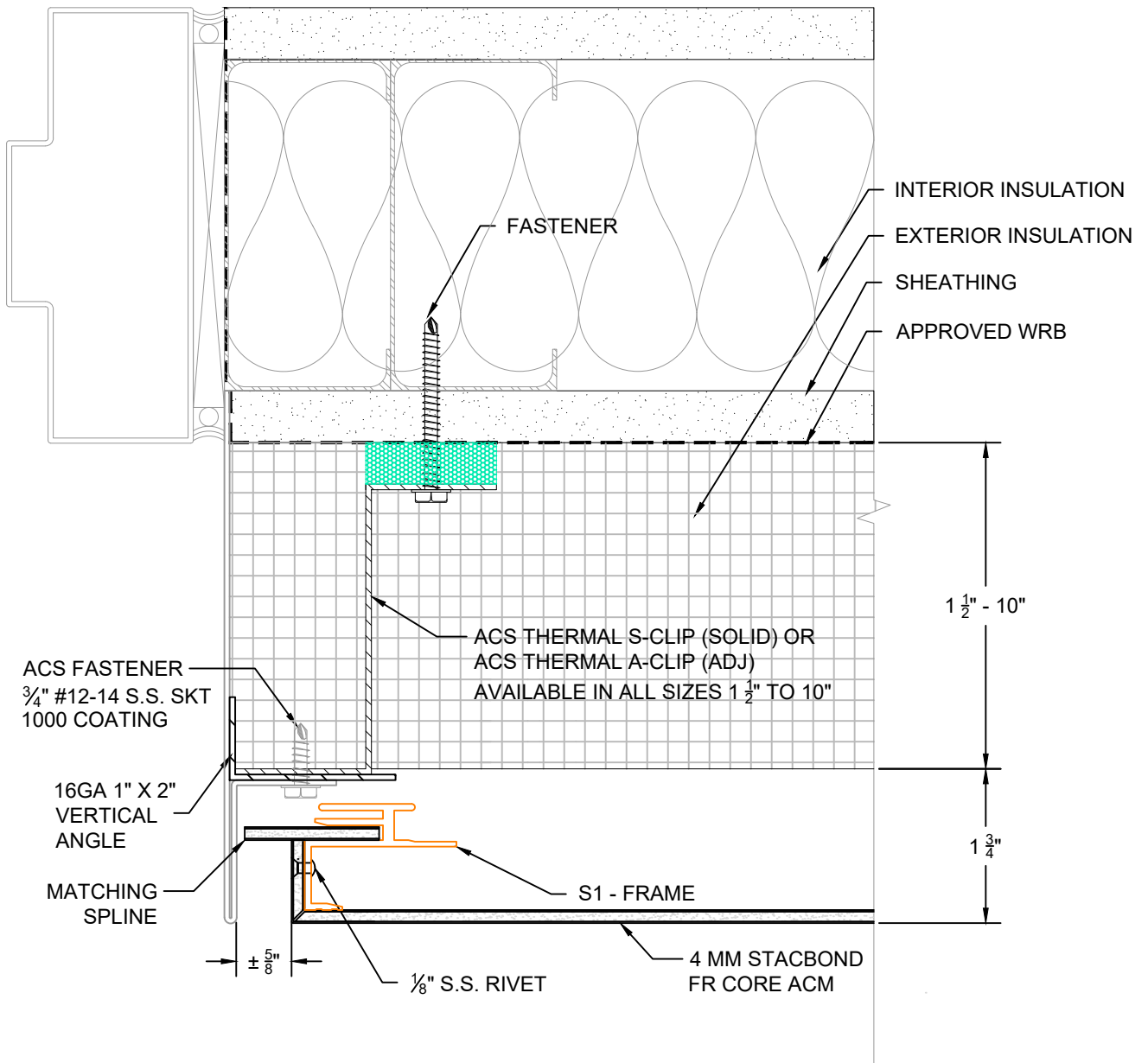
THESE DRAWINGS ARE THE SOLE PROPERTY OF ACS COMPOSITE SYSTEMS AND MAY ONLY BE REPRODUCED UPON RECEIPT OF WRITTEN PERMISSION FROM ACS COMPOSITE SYSTEMS INC.





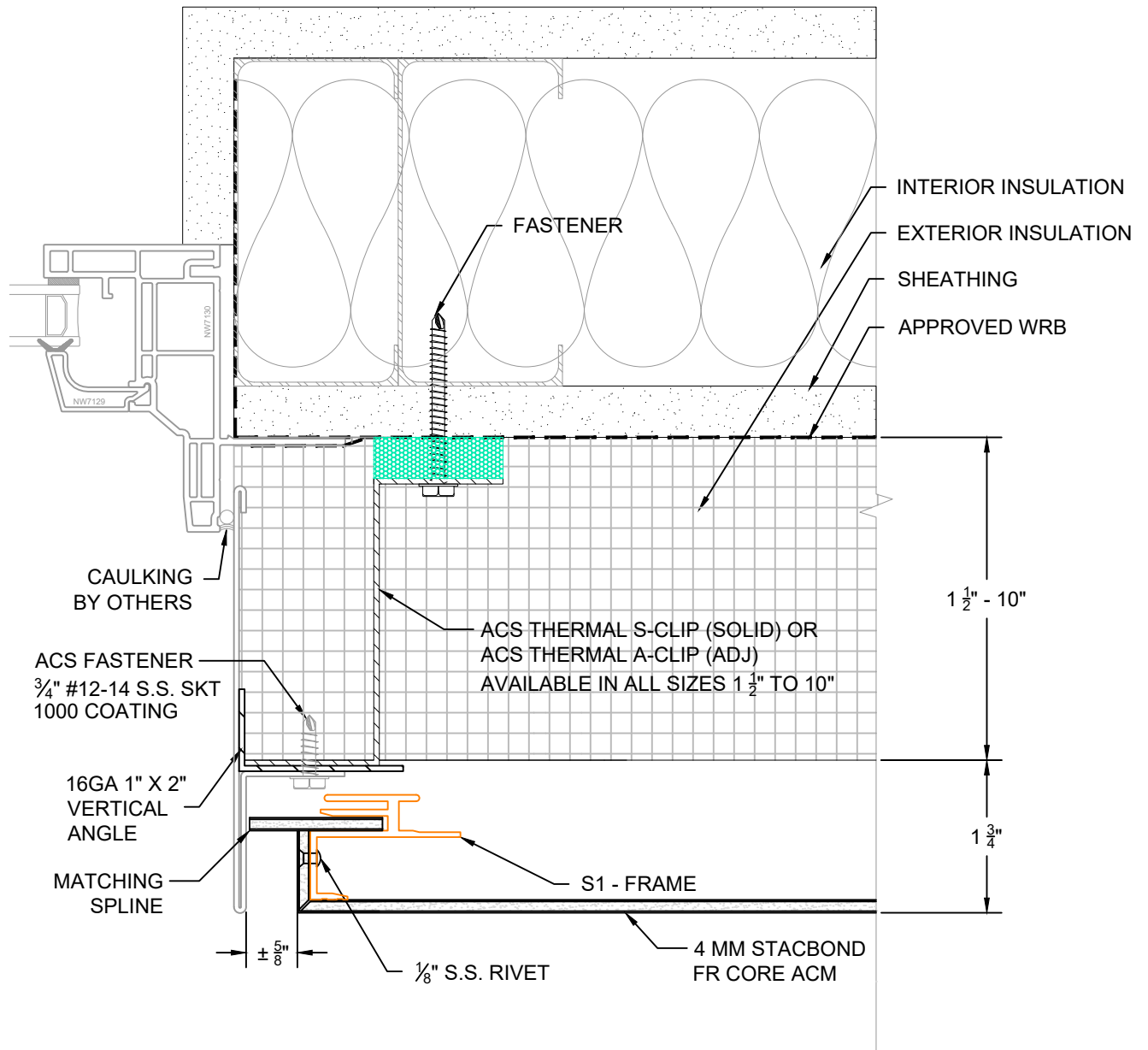
35 - 7450 Butler Road
Bohula, NC 28511
(770) 332-1015
info@acscompositesystems.com
www.acscompositesystems.com



STAC BOND

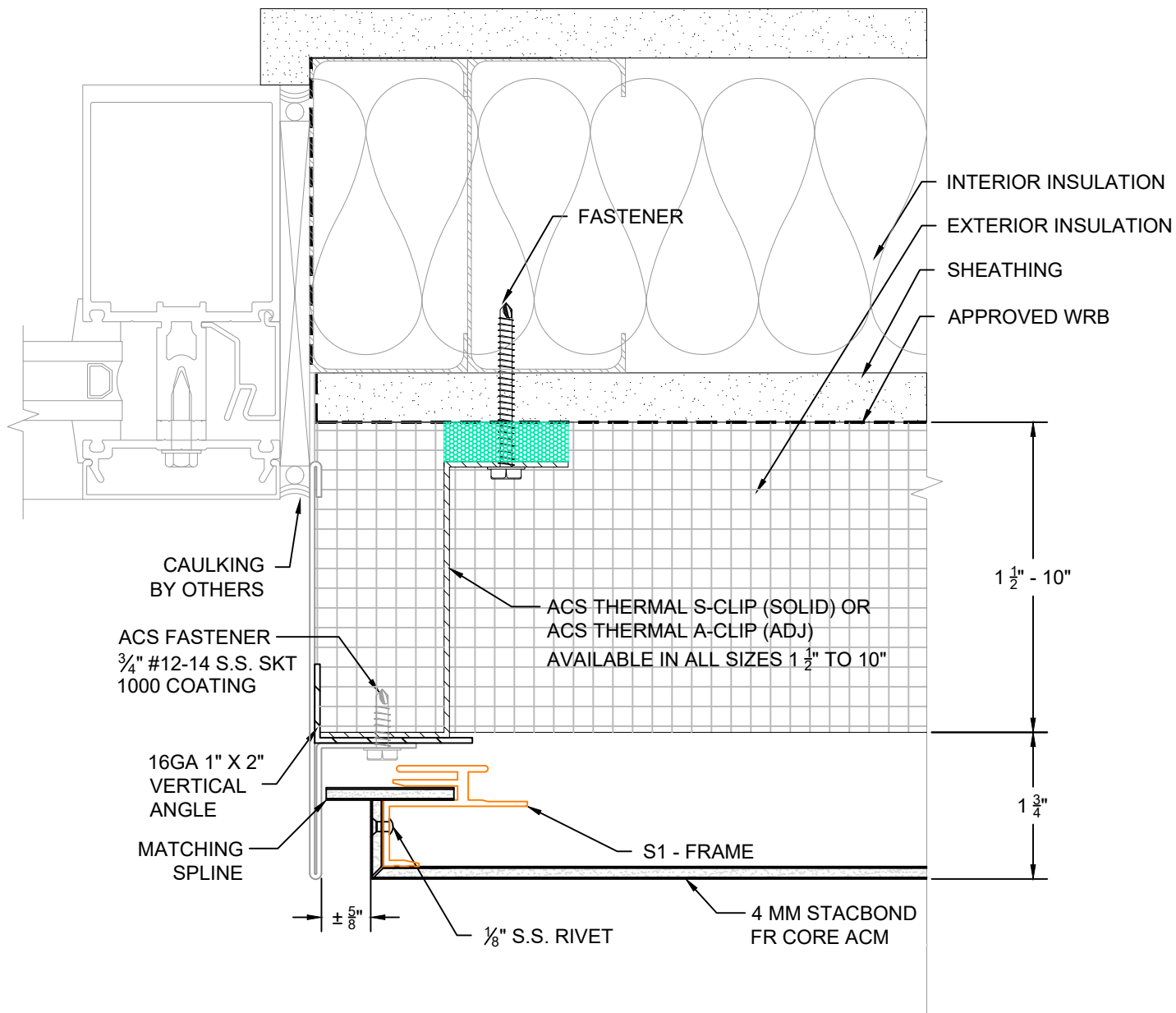
www.stacbond.es




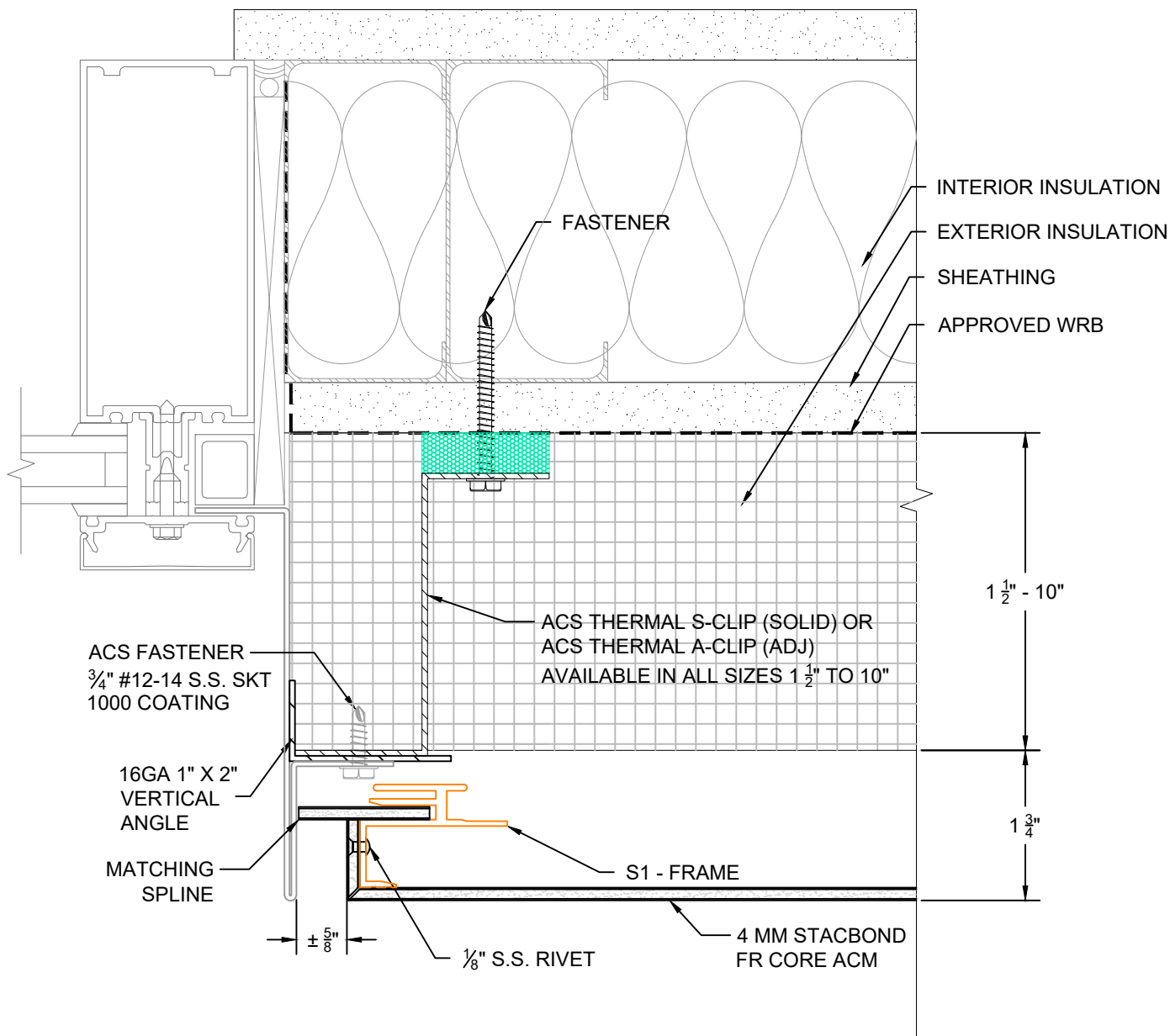
| | | | | | |
|-------------------------------|---|---|--|---|--|
| <p>DETAIL</p> <p>2</p> | <p>DWG BY KAW</p> <p>DATE SUBMITTED SEPTEMBER 2021</p> <p>REVISIONS</p> <p>NO. DATE</p> <p>NO. DATE</p> <p>NO. DATE</p> <p>NO. DATE</p> | <p>PROJECT NAME</p> <p>NOT TO SCALE</p> | <p>PAGE DESCRIPTION</p> <p>STANDARD DETAILS DOOR JAMB</p> <p>THESE DRAWINGS ARE THE SOLE PROPERTY OF ACS COMPOSITE SYSTEMS AND MAY ONLY BE REPRODUCED UPON RECEIPT OF WRITTEN PERMISSION FROM ACS COMPOSITE SYSTEMS INC.</p> | <p> Composite Systems Inc. 35 - 7450 Butler Road Saskatoon, SK S0K 1N1 (778) 332-1015 info@acscompositesystems.com www.acscompositesystems.com</p> | <p> www.stacbond.es</p> |
|-------------------------------|---|---|--|---|--|



| | | | | | |
|--------------------------------|---|---|---|---|--|
| <p>DETAIL</p> <p>3A</p> | <p>DWG BY KAW</p> <p>DATE SUBMITTED SEPTEMBER 2021</p> <p>REVISIONS</p> <p>NO. DATE</p> <p>NO. DATE</p> <p>NO. DATE</p> <p>NO. DATE</p> | <p>PROJECT NAME</p> <p>NOT TO SCALE</p> | <p>PAGE DESCRIPTION</p> <p>STANDARD DETAILS FLANGE WINDOW JAMB</p> <p>THESE DRAWINGS ARE THE SOLE PROPERTY OF ACS COMPOSITE SYSTEMS AND MAY ONLY BE REPRODUCED UPON RECEIPT OF WRITTEN PERMISSION FROM ACS COMPOSITE SYSTEMS INC.</p> | <p> Composite Systems Inc. 35 - 7450 Butler Road Saskatoon, SK S0K 1N1 (778) 352-1015 info@acscompositesystems.com www.acscompositesystems.com</p> | <p> www.stacbond.es</p> |
|--------------------------------|---|---|---|---|--|



| | | | | | |
|--|----------------------------------|--------------|--|--|--|
| DETAIL | DWG BY KAW | PROJECT NAME | PAGE DESCRIPTION |  STACBOND <small>35 - 7450 Butler Road Bohula, NC 28511 (770) 332-1015 info@acscompositesystems.com</small> www.acscompositesystems.com | www.stacbond.es |
| 3B REVISIONS NO. DATE NO. DATE NO. DATE NO. DATE | DATE SUBMITTED SEPTEMBER 2021 | NOT TO SCALE | STANDARD DETAILS PUNCH WINDOW JAMB THESE DRAWINGS ARE THE SOLE PROPERTY OF ACS COMPOSITE SYSTEMS AND MAY ONLY BE REPRODUCED UPON RECEIPT OF WRITTEN PERMISSION FROM ACS COMPOSITE SYSTEMS INC. | | |



DETAIL

DWG BY

KAW

DATE SUBMITTED

SEPTEMBER 2021

REVISIONS

NO. DATE

NO. DATE

NO. DATE

NO. DATE

PROJECT NAME

NOT TO SCALE

PAGE DESCRIPTION

STANDARD DETAILS CURTAIN WALL WINDOW JAMB

THESE DRAWINGS ARE THE SOLE PROPERTY OF ACS COMPOSITE SYSTEMS AND MAY ONLY BE REPRODUCED UPON RECEIPT OF WRITTEN PERMISSION FROM ACS COMPOSITE SYSTEMS INC.

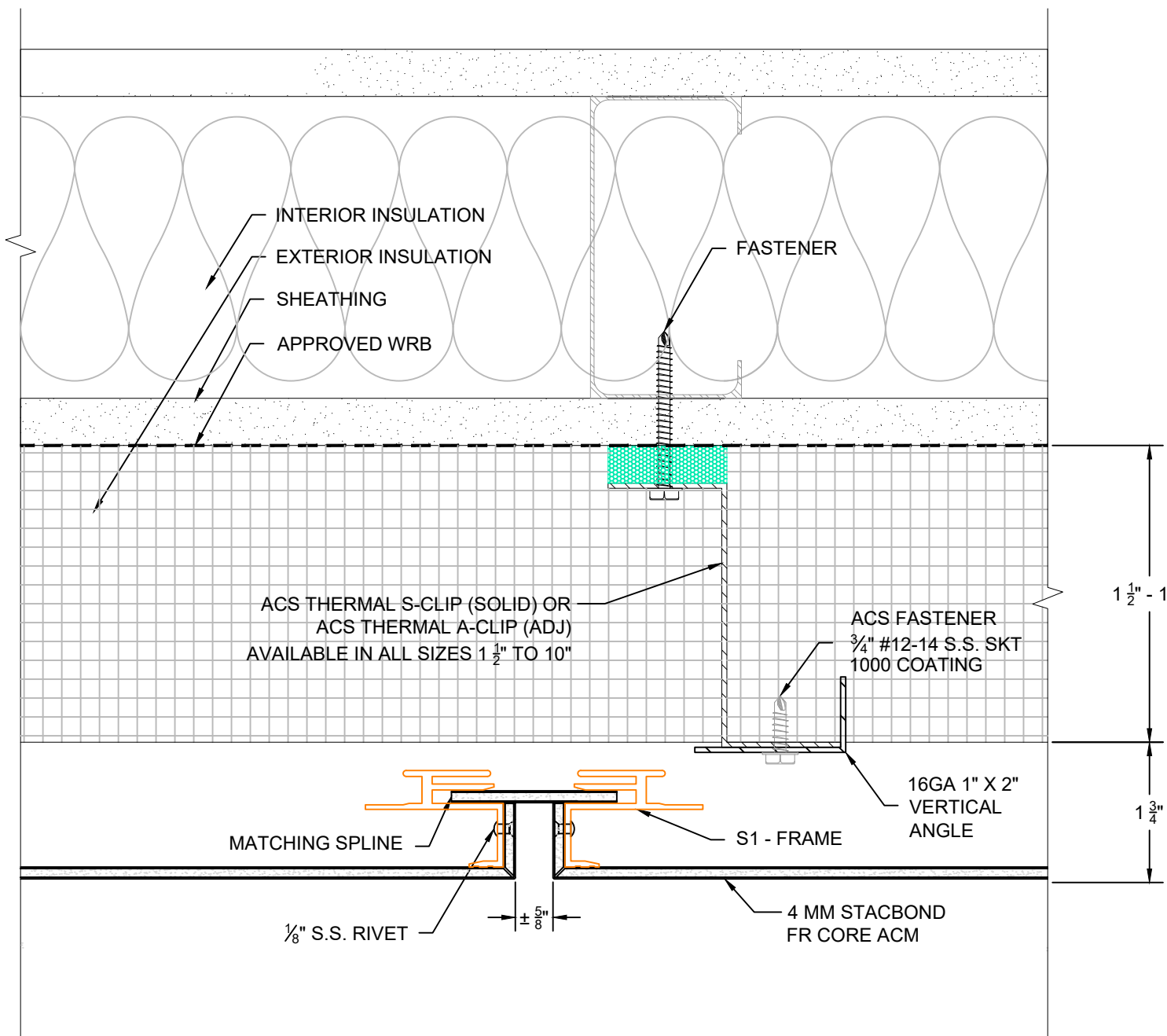



35 - 7450 Butler Road
Bohemia, NY 11810
(770) 332-1015
info@acscompositesystems.com
www.acscompositesystems.com

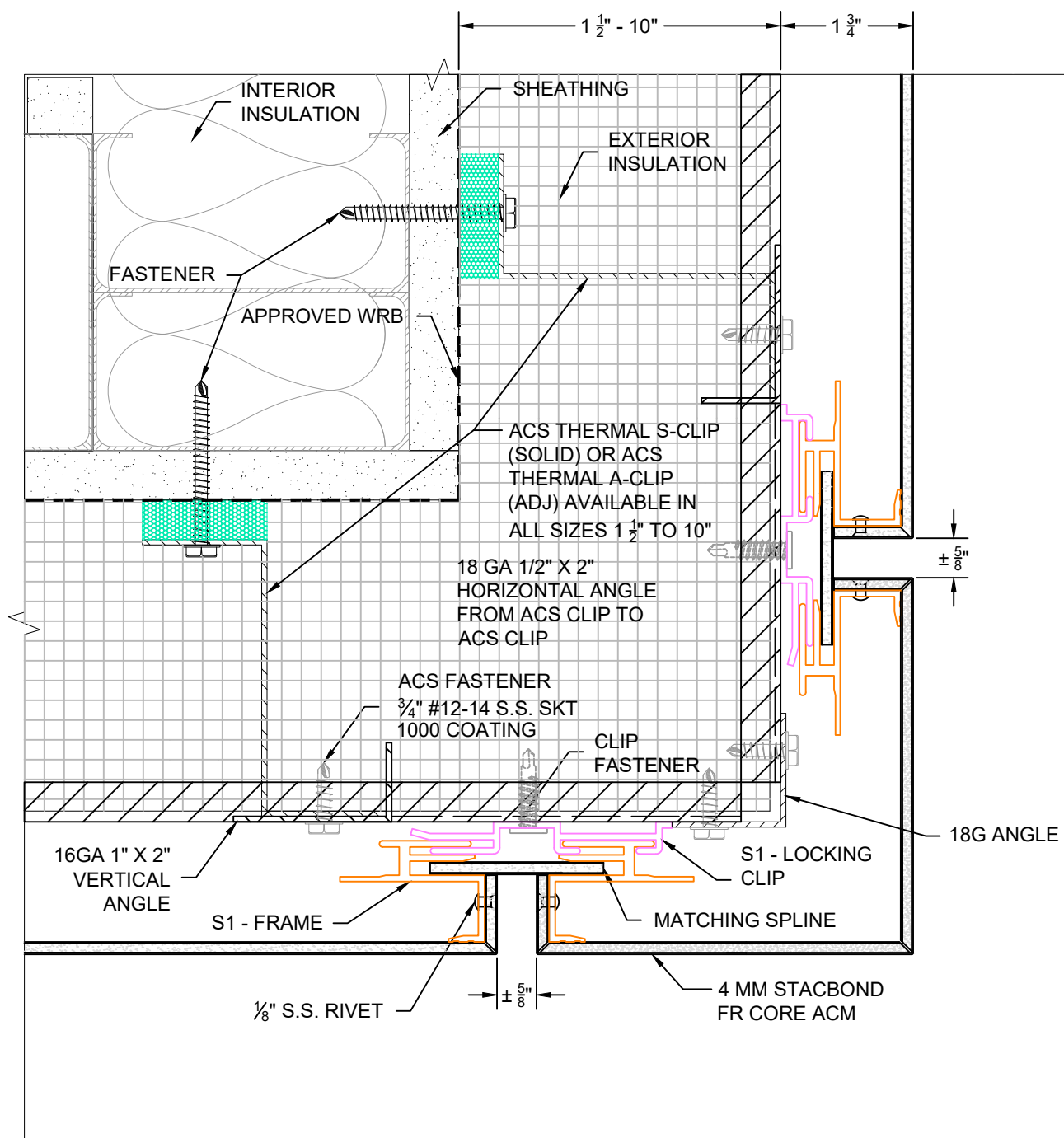
STAC BOND



www.stacbond.es

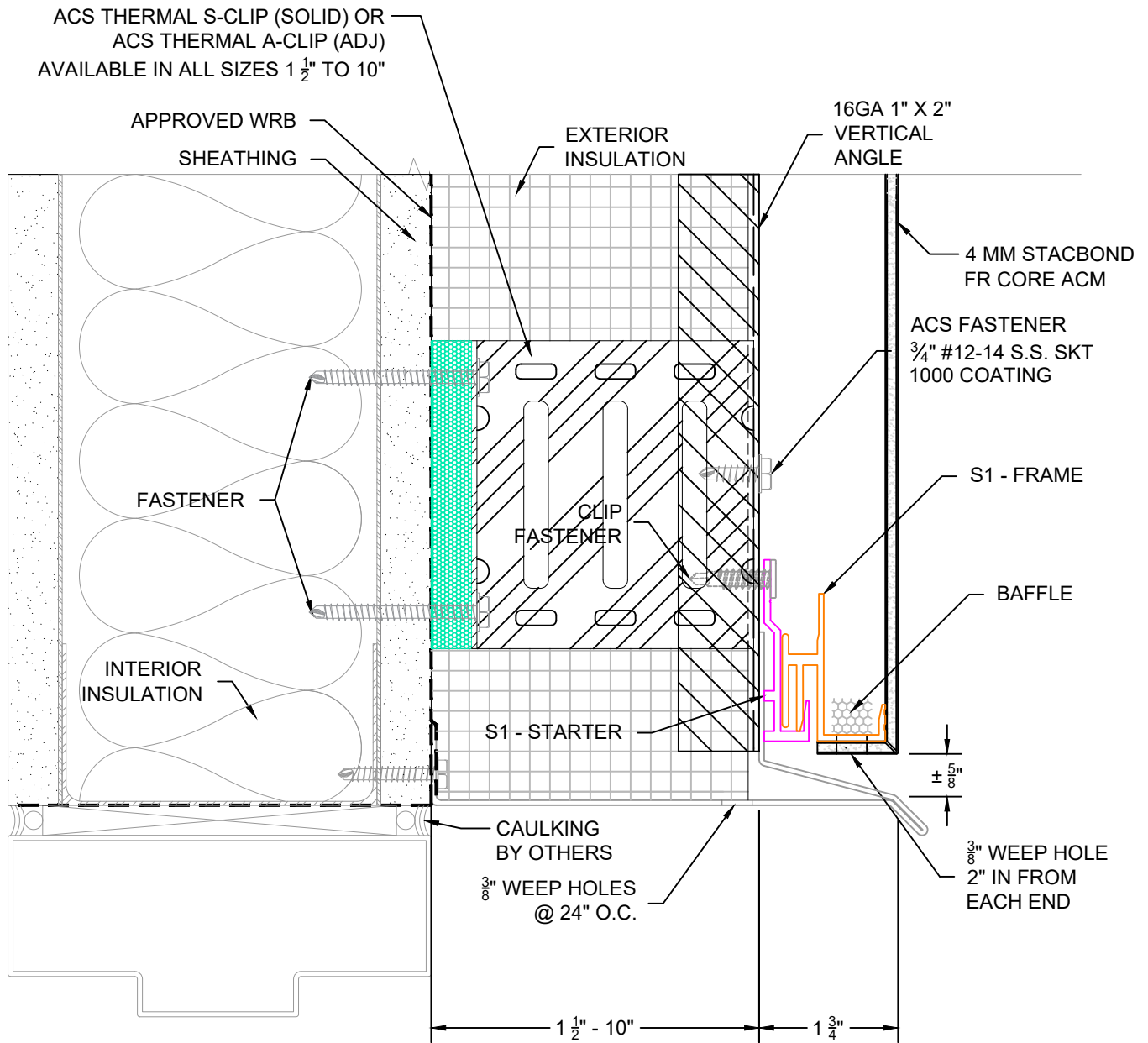
3C



| | | | | | |
|-------------------------------|---|---|--|---|--|
| <p>DETAIL</p> <p>4</p> | <p>DWG BY KAW</p> <p>DATE SUBMITTED SEPTEMBER 2021</p> <p>REVISIONS</p> <p>NO. _____ DATE _____</p> <p>NO. _____ DATE _____</p> <p>NO. _____ DATE _____</p> <p>NO. _____ DATE _____</p> | <p>PROJECT NAME</p> <p>NOT TO SCALE</p> | <p>PAGE DESCRIPTION</p> <p>STANDARD DETAILS</p> <p>TYPICAL VERTICAL</p> <p>THESE DRAWINGS ARE THE SOLE PROPERTY OF ACS COMPOSITE SYSTEMS AND MAY ONLY BE REPRODUCED UPON RECEIPT OF WRITTEN PERMISSION FROM ACS COMPOSITE SYSTEMS INC.</p> | <p> ACS Composite Systems Inc. 35 - 7450 Butler Road Bosque, BC V0S 1S1 (778) 332-1015 info@acscompositesystems.com www.acscompositesystems.com</p> | <p>STAC BOND</p> <p>www.stacbond.es</p> |
|-------------------------------|---|---|--|---|--|



| | | | | | |
|-------------------------------|---|--|--|--|--|
| <p>DETAIL</p> <p>5</p> | <p>DWG BY KAW</p> <p>DATE SUBMITTED SEPTEMBER 2021</p> <p>REVISIONS</p> <p>NO. _____ DATE _____</p> <p>NO. _____ DATE _____</p> <p>NO. _____ DATE _____</p> <p>NO. _____ DATE _____</p> | <p>PROJECT NAME</p> <p>NOT TO SCALE</p> | <p>PAGE DESCRIPTION</p> <p>STANDARD DETAILS OUTSIDE CORNER</p> <p>THESE DRAWINGS ARE THE SOLE PROPERTY OF ACS COMPOSITE SYSTEMS AND MAY ONLY BE REPRODUCED UPON RECEIPT OF WRITTEN PERMISSION FROM ACS COMPOSITE SYSTEMS INC.</p> | <p> ACS Composite Systems Inc. 35 - 7450 Butler Road Saskatoon, SK S7N 1Y1 (778) 332-1015 info@acscompositesystems.com www.acscompositesystems.com</p> | <p> STACBOND www.stacbond.es</p> |
|-------------------------------|---|--|--|--|--|



DETAIL

6

DWG BY
KAW

DATE SUBMITTED
SEPTEMBER 2021

REVISIONS

| NO | DATE | DESCRIPTION |
|----|------|-------------|
| | | |
| | | |
| | | |
| | | |

PROJECT NAME

NOT TO SCALE

PAGE DESCRIPTION

STANDARD DETAILS
DOOR HEAD

THESE DRAWINGS ARE THE SOLE PROPERTY OF ACS COMPOSITE SYSTEMS AND MAY ONLY BE REPRODUCED UPON RECEIPT OF WRITTEN PERMISSION FROM ACS COMPOSITE SYSTEMS INC.

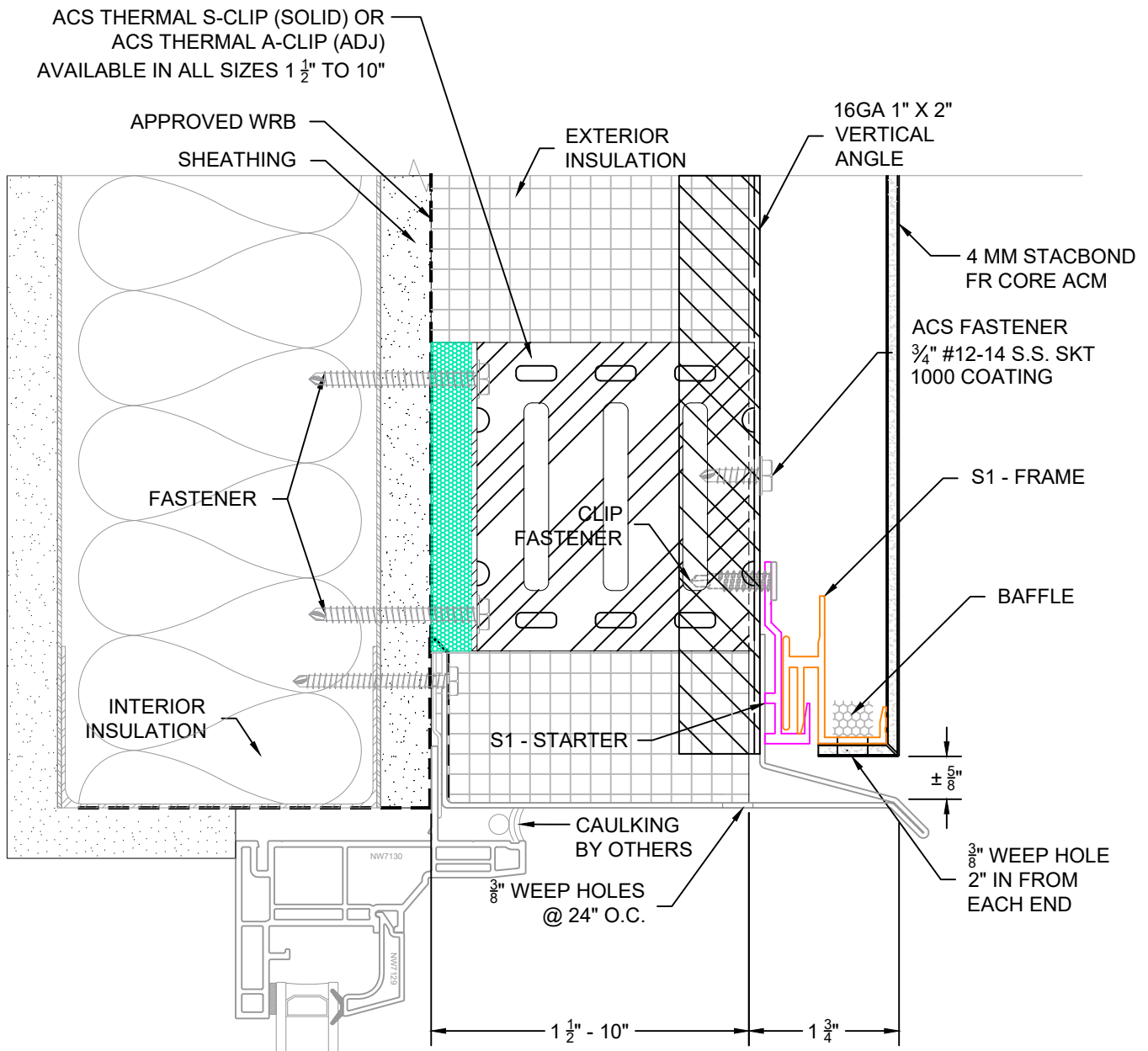
ACS
Composite Systems Inc.

35 - 7450 Butler Road
Sooke, BC V9C 1N1
(778) 332-1015
info@acscompositesystems.com

www.acscompositesystems.com

STAC BOND

www.stacbond.es



DETAIL

DWG BY

KAW

PROJECT NAME

PAGE DESCRIPTION

7A

DATE SUBMITTED
SEPTEMBER 2021

REVISIONS

NO. DATE
NO. DATE
NO. DATE
NO. DATE

NOT TO SCALE

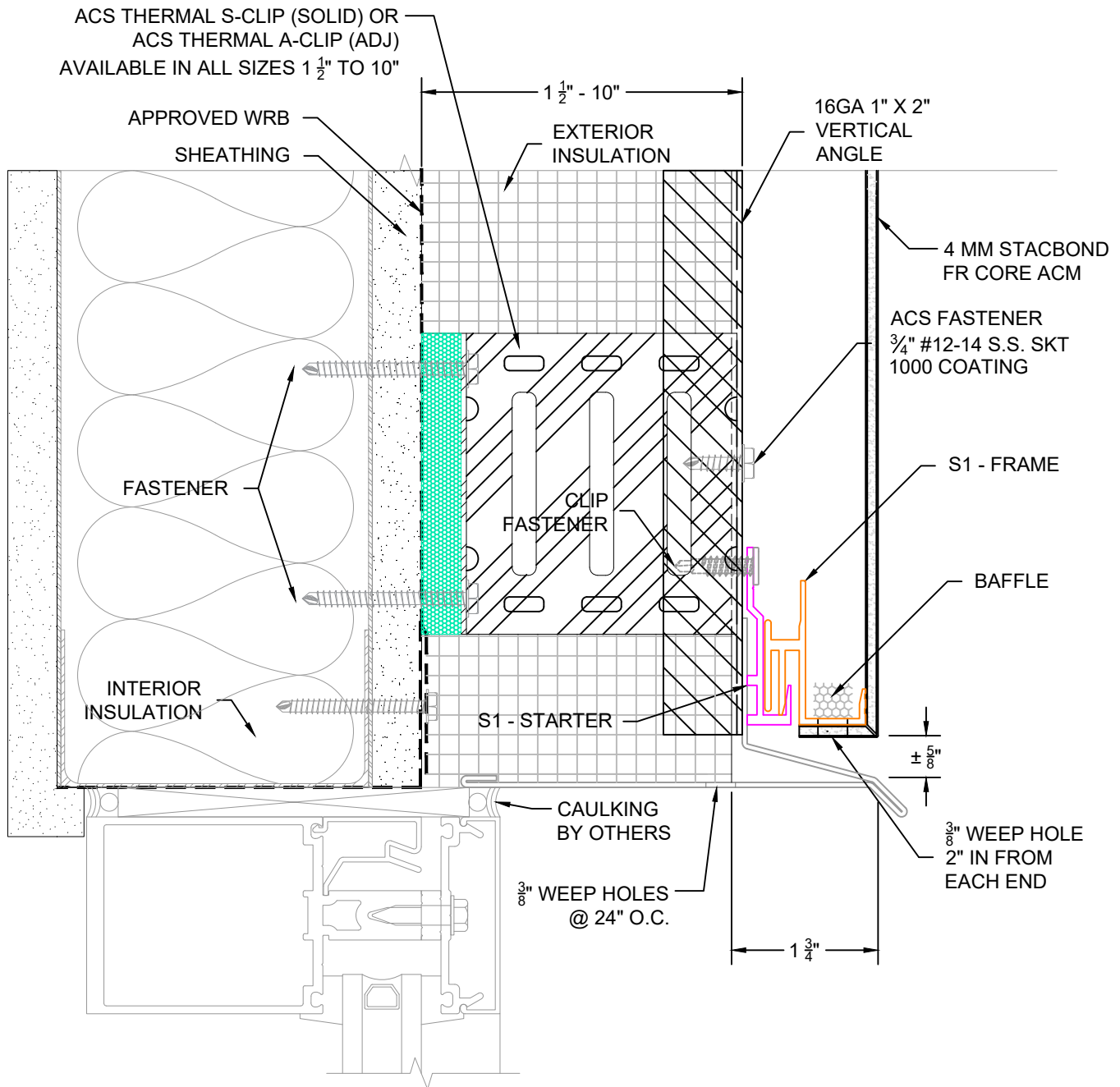
STANDARD DETAILS FLANGE WINDOW HEAD

THESE DRAWINGS ARE THE SOLE PROPERTY OF ACS COMPOSITE SYSTEMS AND MAY ONLY BE REPRODUCED UPON RECEIPT OF WRITTEN PERMISSION FROM ACS COMPOSITE SYSTEMS INC.



STAC BOND

www.stacbond.es



DETAIL

7B

| | |
|----------------|----------------|
| DWG BY | KAW |
| DATE SUBMITTED | SEPTEMBER 2021 |
| REVISIONS | |
| NO. _____ | DATE _____ |
| NO. _____ | DATE _____ |
| NO. _____ | DATE _____ |
| NO. _____ | DATE _____ |

| | |
|--------------|--|
| PROJECT NAME | |
| NOT TO SCALE | |

| | |
|---|--|
| PAGE DESCRIPTION | |
| STANDARD DETAILS PUNCH WINDOW HEAD | |
| THESE DRAWINGS ARE THE SOLE PROPERTY OF ACS COMPOSITE SYSTEMS AND MAY ONLY BE REPRODUCED UPON RECEIPT OF WRITTEN PERMISSION FROM ACS COMPOSITE SYSTEMS INC. | |



STAC BOND

www.stacbond.es

ACS THERMAL S-CLIP (SOLID) OR
ACS THERMAL A-CLIP (ADJ)
AVAILABLE IN ALL SIZES 1 1/2" TO 10"

APPROVED WRB
SHEATHING

EXTERIOR
INSULATION

16GA 1" X 2"
VERTICAL
ANGLE

4 MM STACBOND
FR CORE ACM

ACS FASTENER
3/4" #12-14 S.S. SKT
1000 COATING

S1 - FRAME

BAFFLE

FASTENER

CLIP
FASTENER

INTERIOR
INSULATION

S1 - STARTER

3/8" WEEP
HOLES
@ 24" O.C.

± 5/8"

3/8" WEEP HOLE
1 1/4" IN FROM
EACH END

1 3/4"

DETAIL

DWG BY

KAW

PROJECT NAME

PAGE DESCRIPTION

7C

DATE SUBMITTED
SEPTEMBER 2021

REVISIONS

NO. DATE
NO. DATE
NO. DATE
NO. DATE

NOT TO SCALE

STANDARD DETAILS
CURTAIN WALL WINDOW HEAD

THESE DRAWINGS ARE THE SOLE PROPERTY OF ACS COMPOSITE
SYSTEMS AND MAY ONLY BE REPRODUCED UPON RECEIPT OF
WRITTEN PERMISSION FROM ACS COMPOSITE SYSTEMS INC.



35 - 7450 Butler Road
Boulder, NC 28009
(770) 332-1015
info@acscompositesystems.com
www.acscompositesystems.com

STACBOND

www.stacbond.es

ACS THERMAL S-CLIP (SOLID) OR
ACS THERMAL A-CLIP (ADJ)
AVAILABLE IN ALL SIZES 1 1/2" TO 10"

16GA 1" X 2"
VERTICAL
ANGLE

EXTERIOR
INSULATION

APPROVED WRB
SHEATHING

4 MM STACBOND
FR CORE ACM

S1 - DUAL CLIP

S1 - FRAME

BAFFLE

CLIP
FASTENER

FASTENER

± 5/8"

3/8" WEEP HOLE
2" IN FROM
EACH END

1/8" S.S. RIVET

MATCHING SPLINE

ACS FASTENER
3/4" #12-14 S.S. SKT
1000 COATING

INTERIOR
INSULATION

1 1/2" - 10"

1 3/4"

DETAIL

8

DWG BY

KAW

DATE SUBMITTED

SEPTEMBER 2021

REVISIONS

NO. DATE

NO. DATE

NO. DATE

NO. DATE

PROJECT NAME

NOT TO SCALE

PAGE DESCRIPTION

STANDARD DETAILS TYPICAL HORIZONTAL

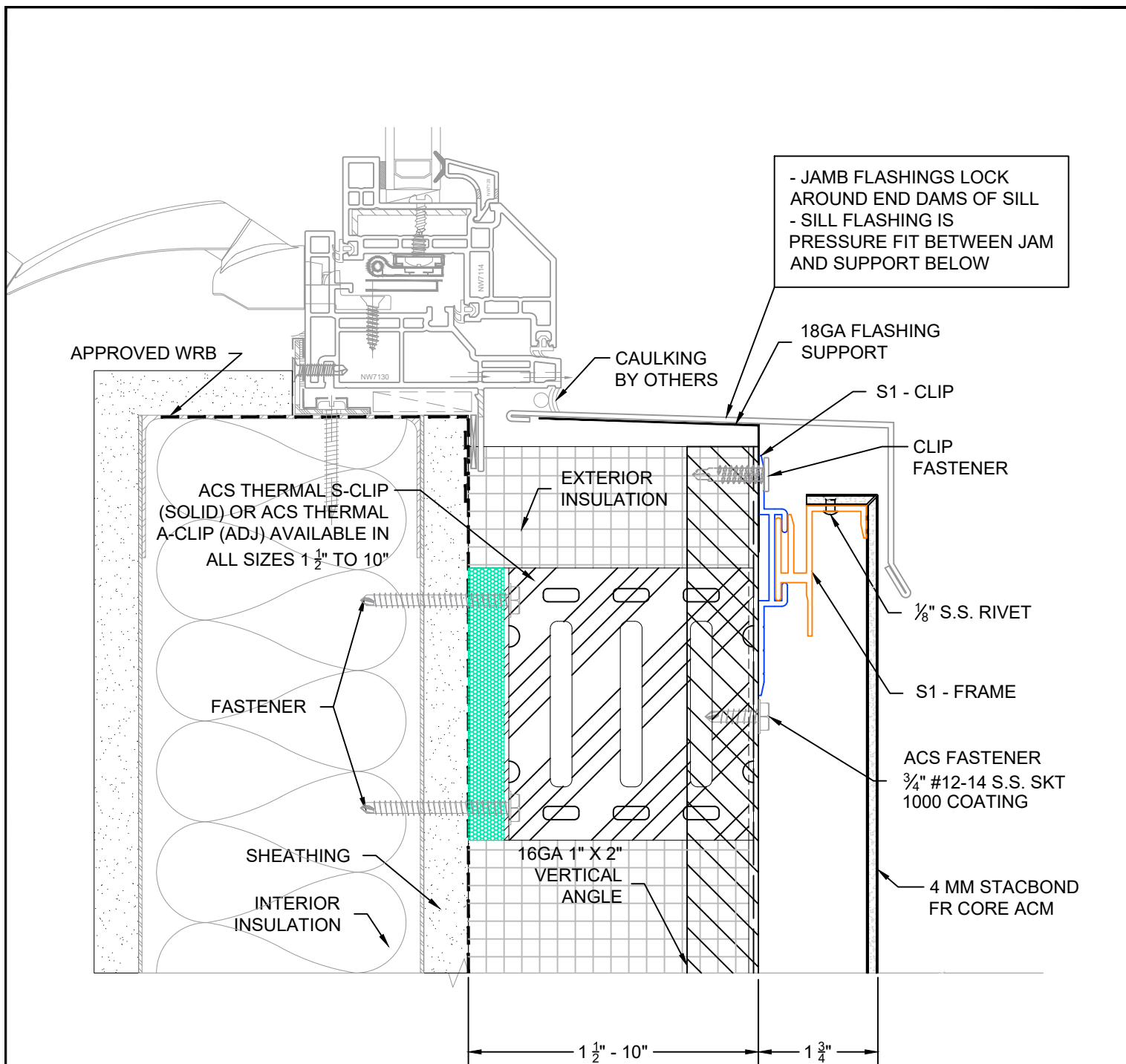
THESE DRAWINGS ARE THE SOLE PROPERTY OF ACS COMPOSITE SYSTEMS AND MAY ONLY BE REPRODUCED UPON RECEIPT OF WRITTEN PERMISSION FROM ACS COMPOSITE SYSTEMS INC.



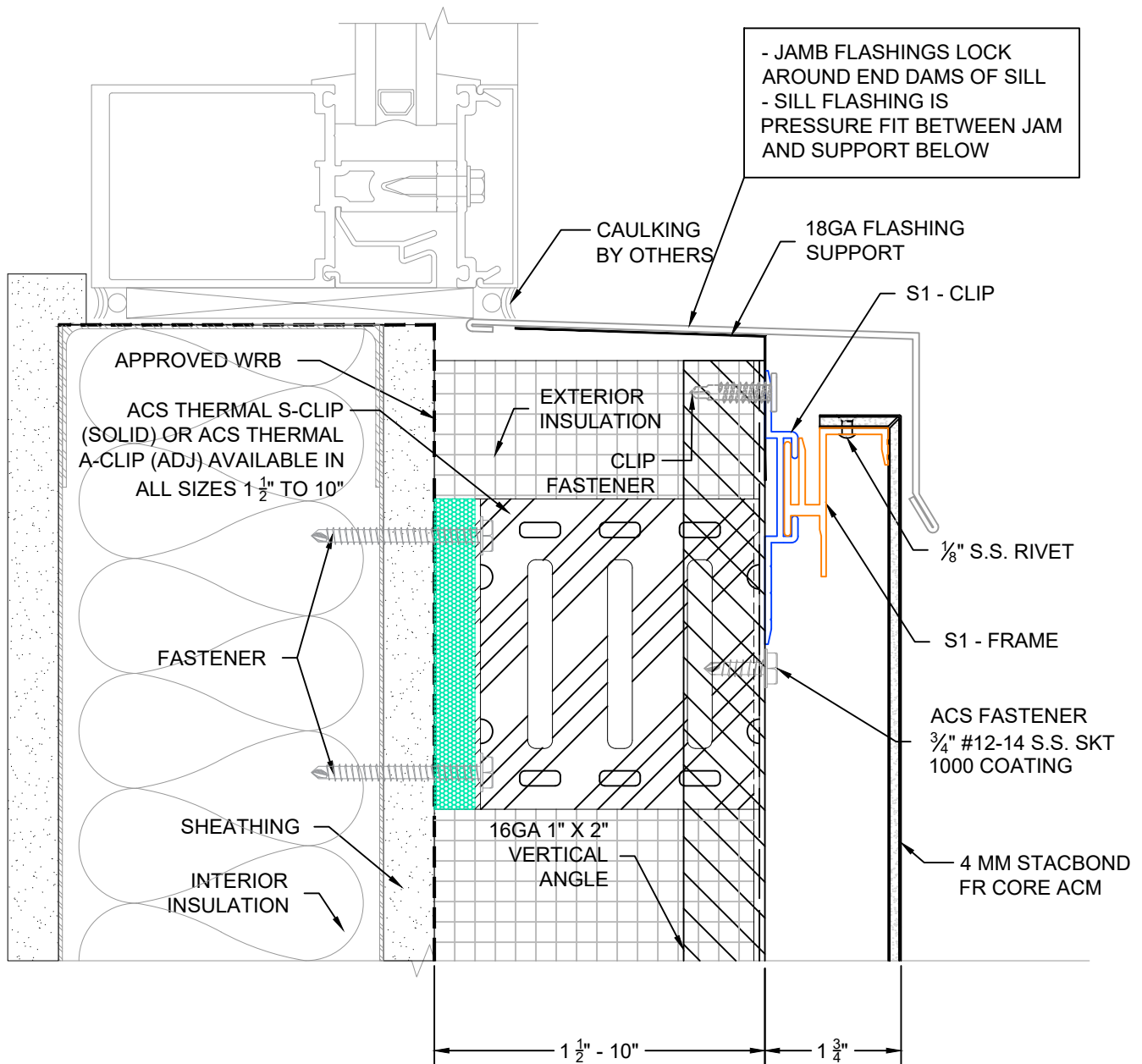
35 - 7450 Butler Road
Socle, NC 28135
(770) 332-1015
info@acscompositesystems.com
www.acscompositesystems.com

STAC BOND

www.stacbond.es



| |
|---|
| DETAIL < |
|---|



DETAIL

DWG BY

KAW

PROJECT NAME

PAGE DESCRIPTION

STANDARD DETAILS PUNCH WINDOW SILL

THESE DRAWINGS ARE THE SOLE PROPERTY OF ACS COMPOSITE SYSTEMS AND MAY ONLY BE REPRODUCED UPON RECEIPT OF WRITTEN PERMISSION FROM ACS COMPOSITE SYSTEMS INC.

ACS
Composite Systems Inc.
35 - 7450 Butler Road
Bosque, BC V1C 1Y1
(778) 332-1015
info@acscompositesystems.com
www.acscompositesystems.com

STACBOND

www.stacbond.es

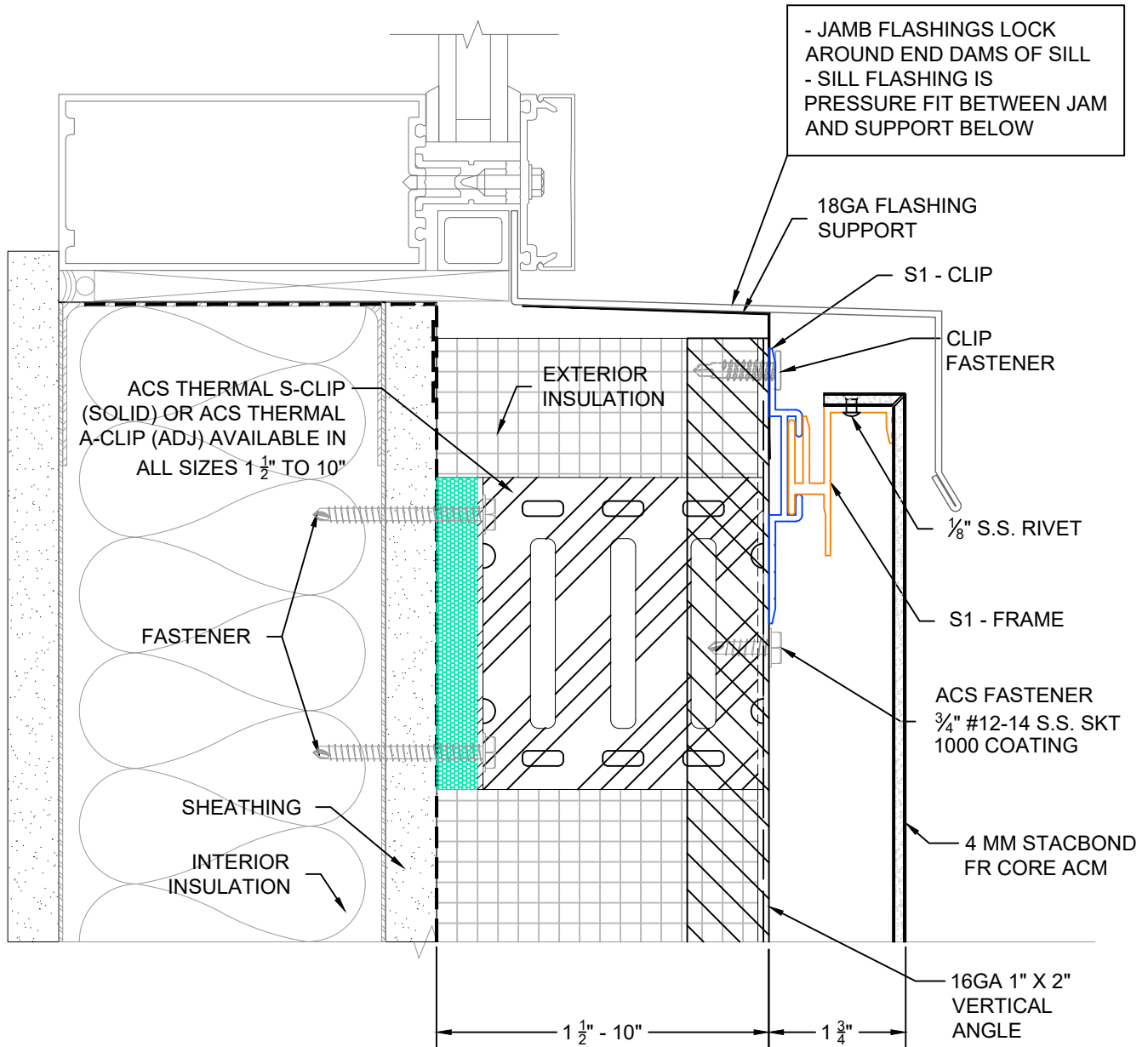
9B

DATE SUBMITTED
SEPTEMBER 2021

REVISIONS

NO. DATE
NO. DATE
NO. DATE
NO. DATE

NOT TO SCALE



DETAIL

DWG BY

KAW

PROJECT NAME

PAGE DESCRIPTION

STANDARD DETAILS CURTAIN WALL WINDOW SILL

THESE DRAWINGS ARE THE SOLE PROPERTY OF ACS COMPOSITE SYSTEMS AND MAY ONLY BE REPRODUCED UPON RECEIPT OF WRITTEN PERMISSION FROM ACS COMPOSITE SYSTEMS INC.



www.acscompositesystems.com

STAC BOND

www.stacbond.es

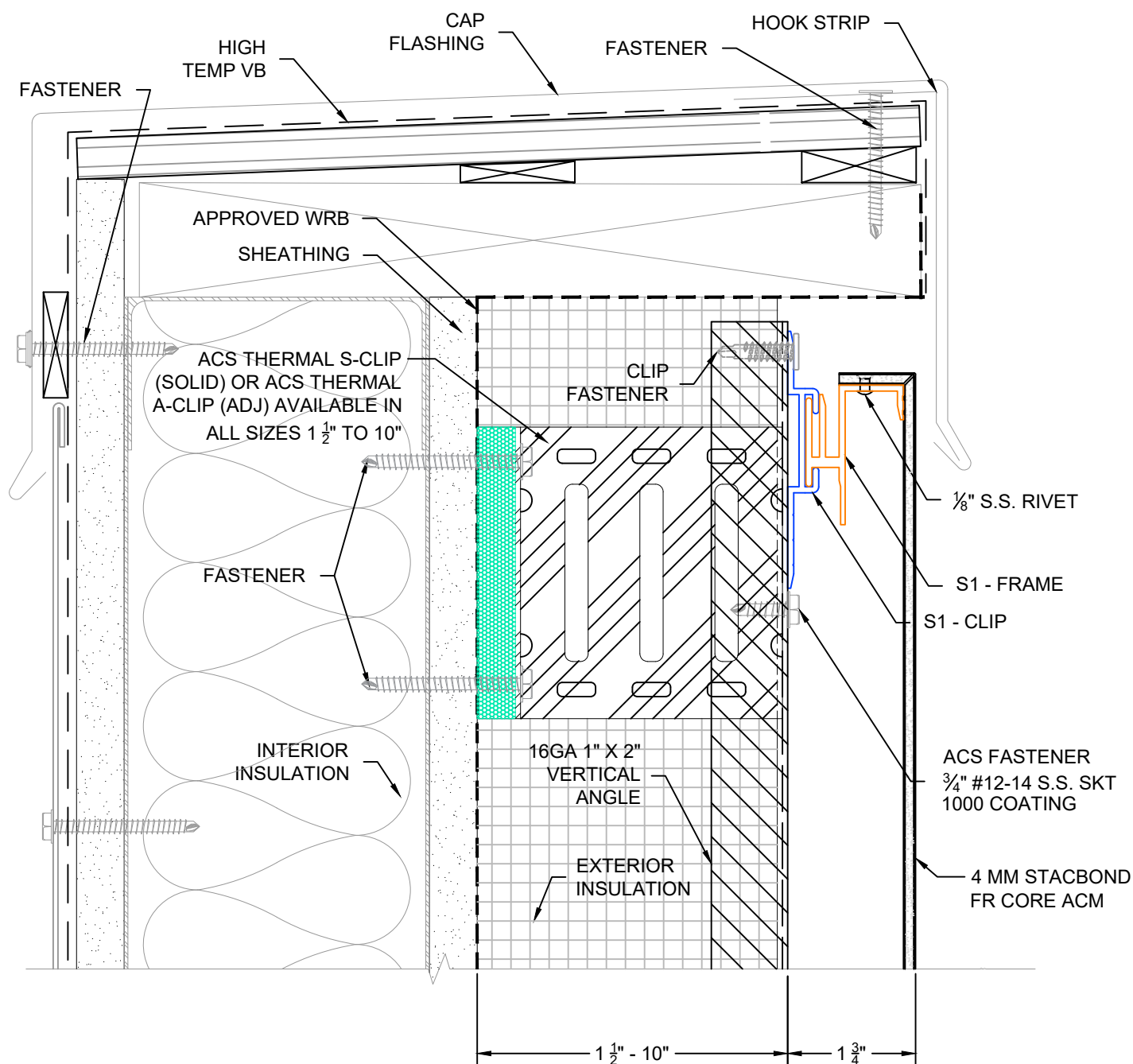
9C

DATE SUBMITTED
SEPTEMBER 2021

REVISIONS

NO. DATE
NO. DATE
NO. DATE
NO. DATE

NOT TO SCALE



DETAIL

10

DWG BY
KAW
DATE SUBMITTED
SEPTEMBER 2021
REVISIONS
NO. DATE
NO. DATE
NO. DATE
NO. DATE

PROJECT NAME

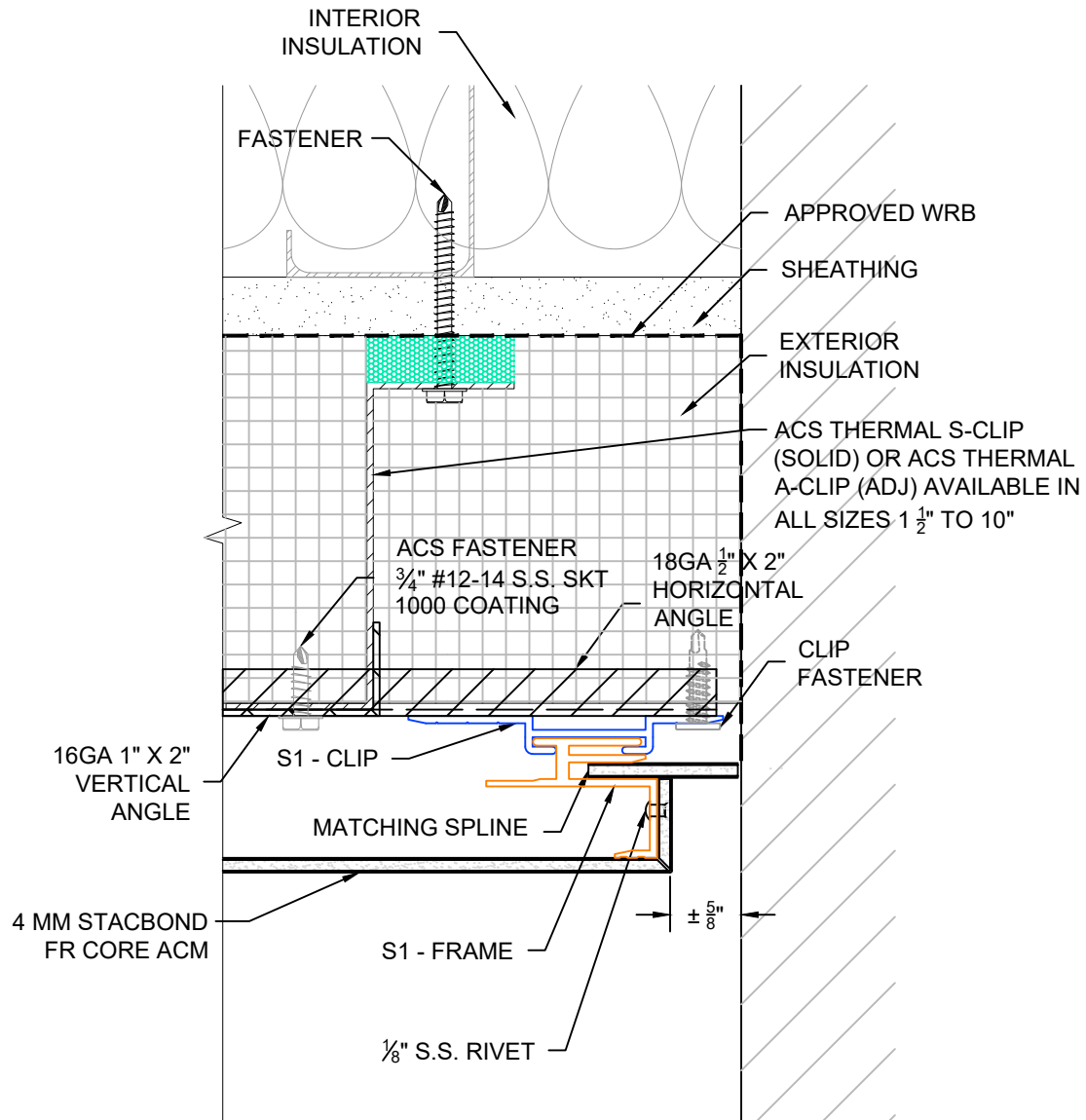
NOT TO SCALE

PAGE DESCRIPTION
STANDARD DETAILS
PARAPET CAP
THESE DRAWINGS ARE THE SOLE PROPERTY OF ACS COMPOSITE SYSTEMS AND MAY ONLY BE REPRODUCED UPON RECEIPT OF WRITTEN PERMISSION FROM ACS COMPOSITE SYSTEMS INC.

ACS
Composite Systems Inc.
35 - 7450 Butler Road
Sooke, BC V9C 2Y1
(778) 352-1015
info@acscompositesystems.com
www.acscompositesystems.com

STACBOND

www.stacbond.es



DETAIL

DWG BY

KAW

DATE SUBMITTED

SEPTEMBER 2021

REVISIONS

NO. DATE

NO. DATE

NO. DATE

NO. DATE

PROJECT NAME

NOT TO SCALE

PAGE DESCRIPTION

STANDARD DETAILS VERTICAL END

THESE DRAWINGS ARE THE SOLE PROPERTY OF ACS COMPOSITE SYSTEMS AND MAY ONLY BE REPRODUCED UPON RECEIPT OF WRITTEN PERMISSION FROM ACS COMPOSITE SYSTEMS INC.



35 - 7450 Butler Road

Bohula, NC 28515

(770) 332-1015

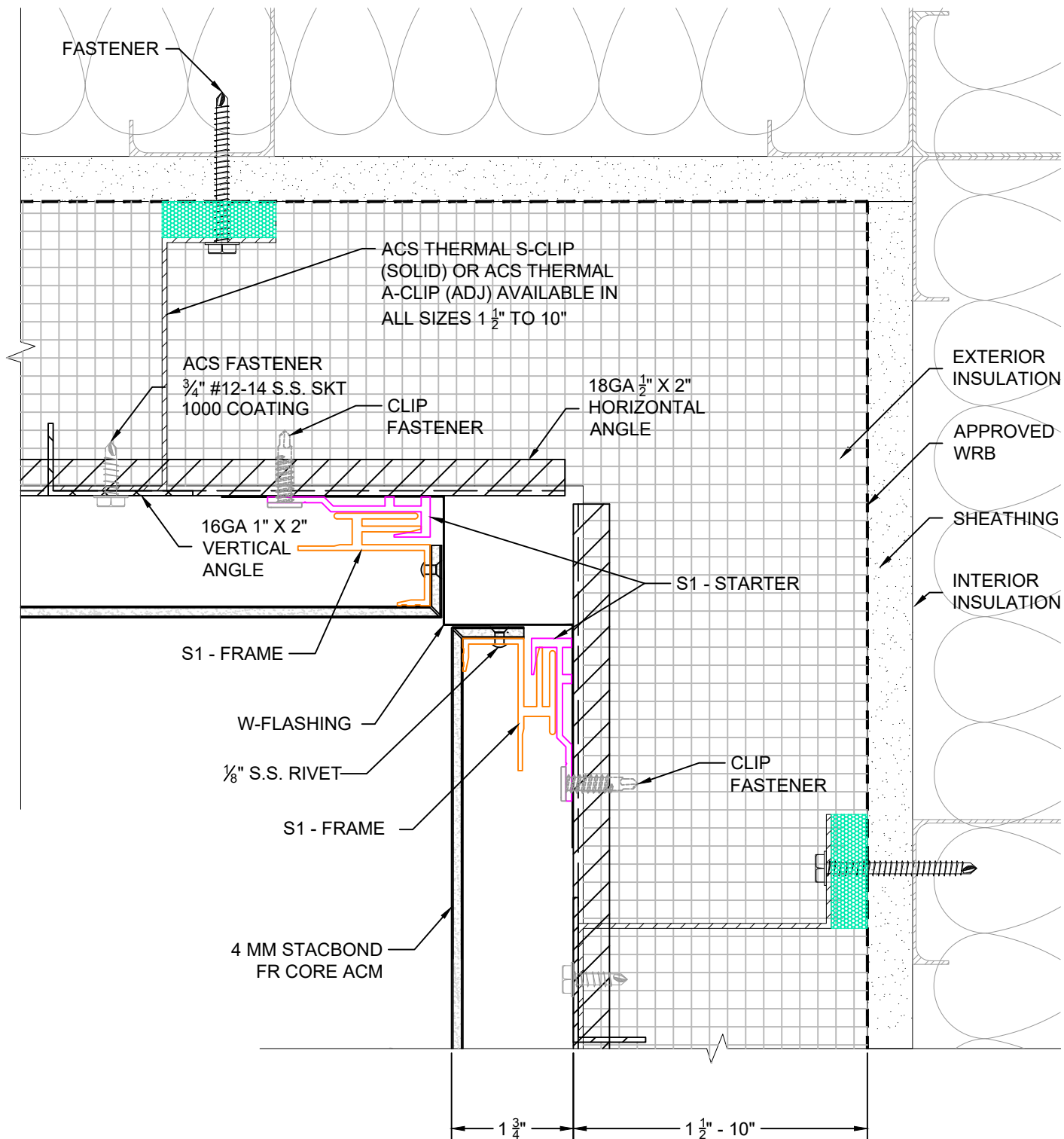
info@acscompositesystems.com



www.acscompositesystems.com

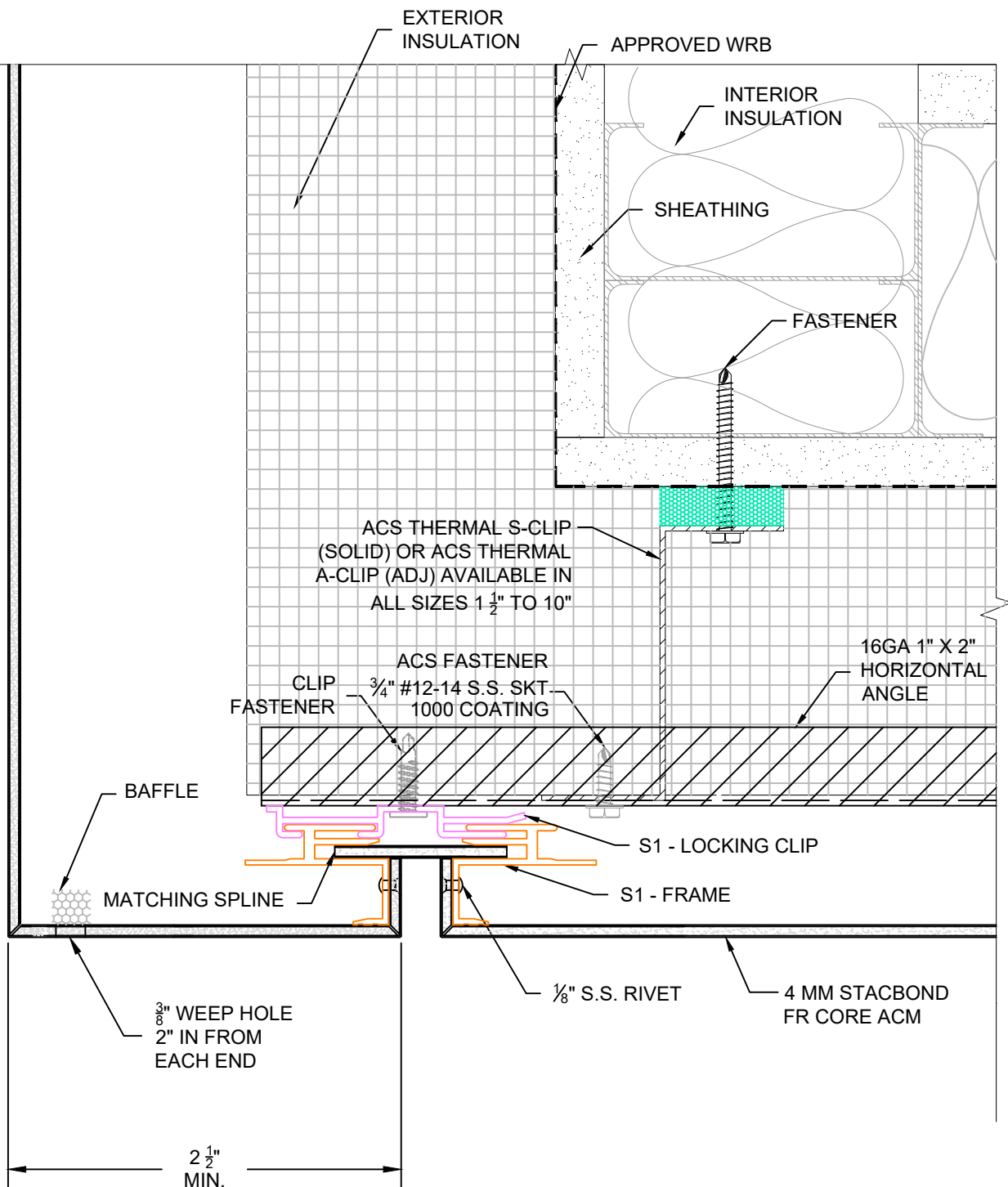
STAC BOND

www.stacbond.es

11



| | | | | | |
|--------|---|--------------|---|--|--|
| DETAIL | DWG BY KAW | PROJECT NAME | PAGE DESCRIPTION |  ACS Composite Systems Inc. <small>35 - 7450 Butler Road Seattle, WA 98148 (206) 332-1015 info@acscompositesystems.com</small> |  STACBOND <small>www.stacbond.es</small> |
| 12 | DATE SUBMITTED SEPTEMBER 2021 | | STANDARD DETAILS INSIDE CORNER <small>THESE DRAWINGS ARE THE SOLE PROPERTY OF ACS COMPOSITE SYSTEMS AND MAY ONLY BE REPRODUCED UPON RECEIPT OF WRITTEN PERMISSION FROM ACS COMPOSITE SYSTEMS INC.</small> | | |
| | REVISIONS NO. DATE NO. DATE NO. DATE NO. DATE | NOT TO SCALE | | | |



DETAIL

13

| | |
|----------------|----------------|
| DWG BY | KAW |
| DATE SUBMITTED | SEPTEMBER 2021 |
| REVISIONS | |
| NO. DATE | |
| NO. DATE | |
| NO. DATE | |
| NO. DATE | |

| | |
|--------------|--|
| PROJECT NAME | |
| NOT TO SCALE | |

| | |
|---|------------------------------------|
| PAGE DESCRIPTION | STANDARD DETAILS TYPICAL SOFFIT |
| THESE DRAWINGS ARE THE SOLE PROPERTY OF ACS COMPOSITE SYSTEMS AND MAY ONLY BE REPRODUCED UPON RECEIPT OF WRITTEN PERMISSION FROM ACS COMPOSITE SYSTEMS INC. | |



STAC BOND

www.stacbond.es