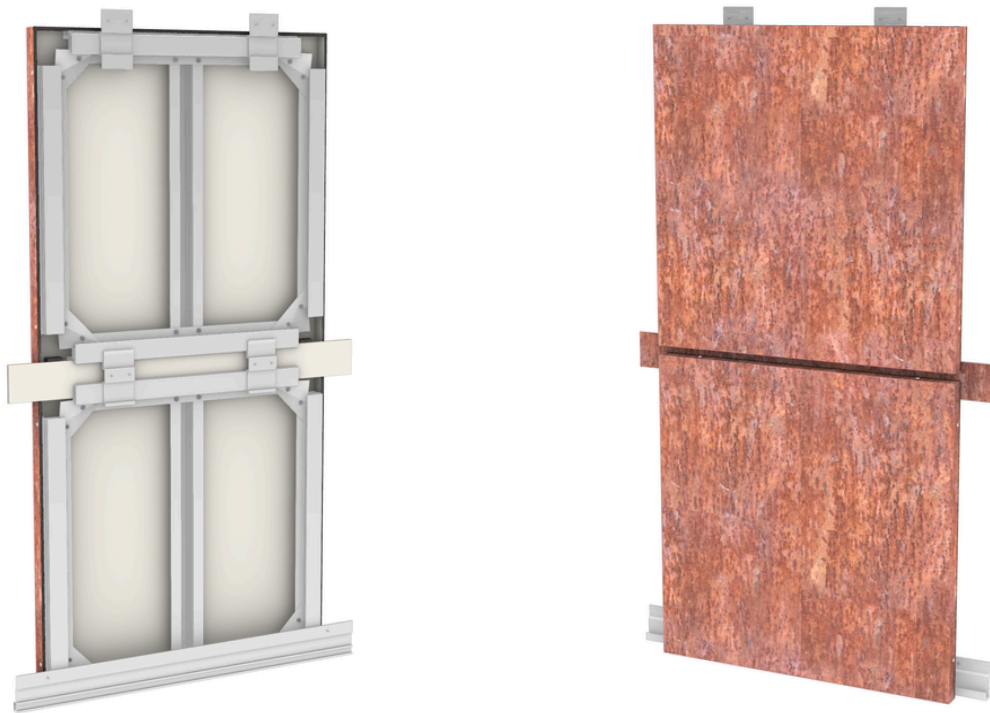


ACP SYSTEM-1 DETAIL DRAWINGS

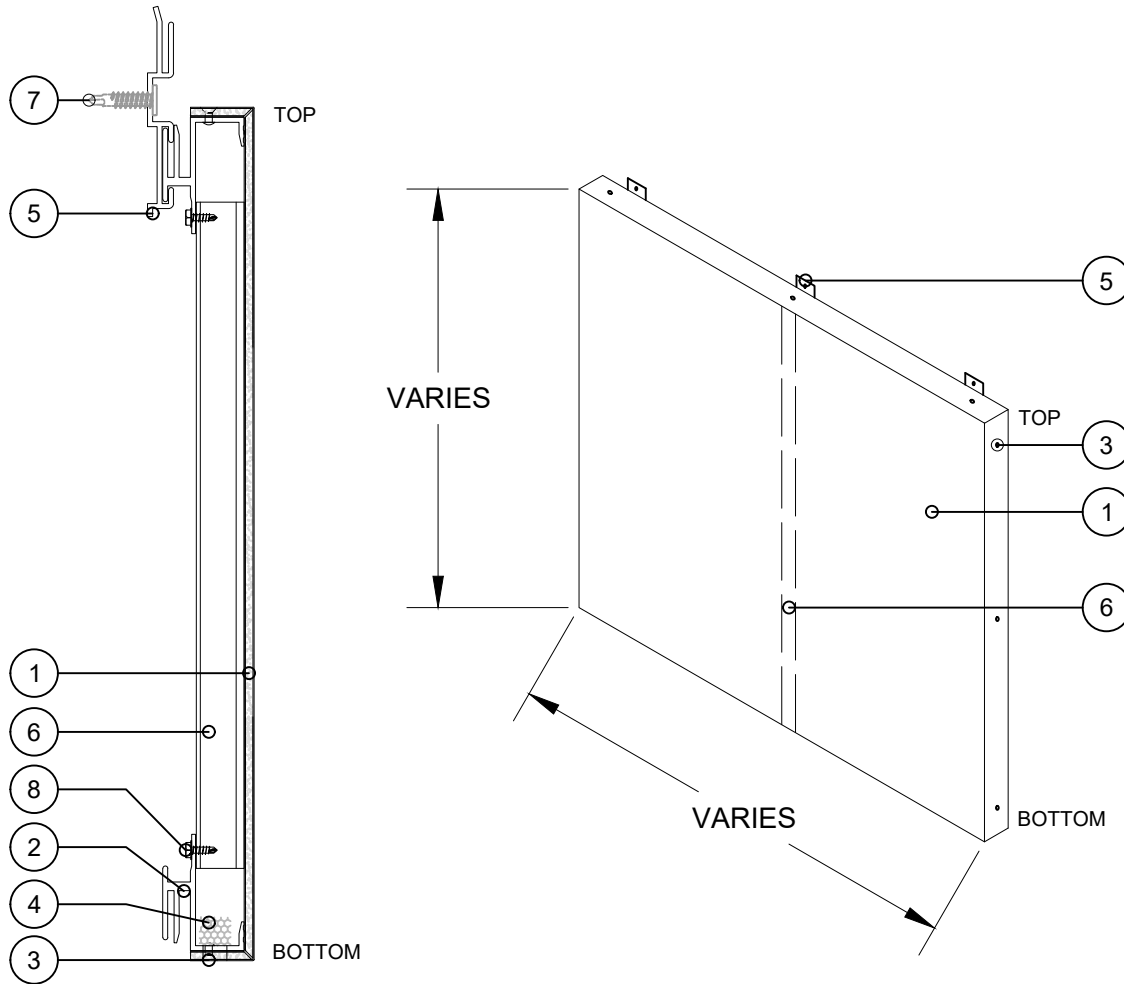


ACS Composite Systems has a complete package of detailed drawings for ACP System-1. Contact us by phone or email to obtain system details in CAD format.

ACS PANEL SYSTEMS

ACP SYSTEM - 1

INTERTEK QA PROGRAMM FOR DESIGN LISTING, SPEC ID - 55964
 CERTIFIED AND CODE COMPLIANT TO: **CAN/ULC-S134:13** STANDARD METHOD OF FIRE
 TEST OF EXTERIOR WALL ASSEMBLIES, **AAMA 508-14** AND **ASTM E330/E330M-14**
 PRESSURE EQUALIZATION AND UNIFORM LOAD



LIST OF MATERIALS

- | | |
|--|-------------------------------------|
| 1. 4MM STACBOND FR CORE OR A2 CORE ACM | 5. S1 - DUAL CLIP (ALUMINUM) |
| 2. S1 - FRAME (ALUMINUM) | 6. S1 - STIFFENER (ALUMINUM) |
| 3. 1/8" S.S. RIVET | 7. #10 - 3/4" SCREW DT-2000 COATING |
| 4. WEEP HOLE 3/8" WITH BAFFLE | 8. #10 - 1/2" SCREW DT-2000 COATING |



30-7402 Dulles Road
 Herndon, VA 20151
 (703) 892-0516
 info@acscompositesystems.com
 www.acscompositesystems.com



www.stacbond.es

PAGE DESCRIPTION

ACS PANEL SYSTEMS
 ACP SYSTEM-1 with 4mm STACBOND A2 CORE or FR CORE
 ACM

ISOMETRIC AND CUT THROUGH
 VIEW OF PANELS

DWG BY

FG

REVIEWED

DATE SUBMITTED

9 MAY 2024



NOT TO SCALE

REVISIONS

NO. DATE _____
 NO. DATE _____
 NO. DATE _____
 NO. DATE _____

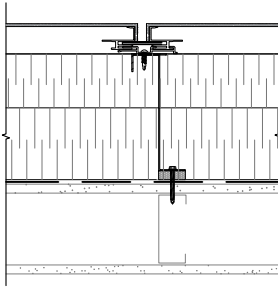
INDEX

1.01 INDEX
 1.02 ASSEMBLIES
 2.01 ISOMETRIC ELEVATION
 2.02 WALL SECTION
 3.01 VERTICAL JOINT PLAN DETAIL
 3.02A CURTAIN WALL INTERFACE AT JAMB PLAN DETAIL
 3.02B FIBERGLASS WINDOW AT JAMB PLAN DETAIL
 3.03 OUTSIDE CORNER PLAN DETAIL
 3.04 ALUMINUM DOOR AT JAMB PLAN DETAIL
 4.01 PARAPET SECTION DETAIL
 4.02A CURTAIN WALL INTERFACE AT HEAD SECTION DETAIL
 4.02B FIBERGLASS WINDOW AT HEAD SECTION DETAIL
 4.03A CURTAIN WALL INTERFACE AT SILL SECTION DETAIL
 4.03B FIBERGLASS WINDOW AT SILL SECTION DETAIL
 4.04 SOFFIT SECTION DETAIL
 4.05 SOFFIT AT WALL SECTION DETAIL
 4.06 BASE OF WALL AT FOUNDATION SECTION DETAIL
 4.07 INTERMEDIATE FLOOR SECTION DETAIL
 4.08 INTERMEDIATE FLOOR WITH THROUGH-WALL FLASHING SECTION DETAIL
 4.09 ALUMINUM DOOR AT HEAD SECTION DETAIL
 4.10 ALUMINUM DOOR AT SILL SECTION DETAIL

 <p>30-7402 Water Road Beaverton, OR 97008 (773) 882-1016 info@acscompositesystems.com www.acscompositesystems.com</p>	 <p>www.stacbond.es</p>	PAGE DESCRIPTION	DWG BY	REVIEWED
		ACS PANEL SYSTEMS ACP SYSTEM-1 with 4mm STACBOND A2 CORE or FR CORE ACM	FG	
		INDEX	DATE SUBMITTED 9 MAY 2024	NOT TO SCALE
			REVISIONS	1.01
			NO _____ DATE _____	
			NO _____ DATE _____	
			NO _____ DATE _____	
			NO _____ DATE _____	

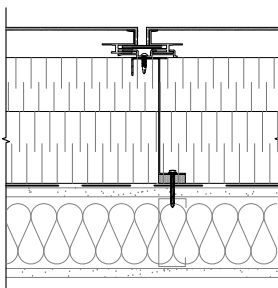
ASSEMBLIES

EXTERIOR INSULATED STEEL-FRAMED WALL ASSEMBLY



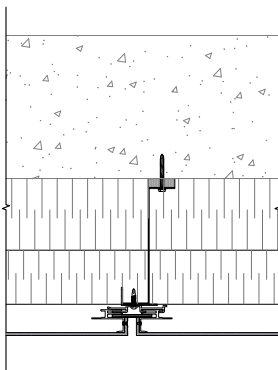
- ACS, ACP SYSTEM-1 WITH 4 mm STACBOND® A2 CORE OR FR CORE ACM
- ACS THERMAL CLIP 2"-10"
- 16GA. 1" X 2" VERTICAL ANGLE
- 2"-10" STONE WOOL INSULATION
- SOPRASEAL STICK 1100T AIR, VAPOUR, AND MOISTURE BARRIER
- EXTERIOR GYPSUM SHEATHING
- STEEL-FRAMED WALL
- INTERIOR GYPSUM BOARD

SPLIT INSULATED STEEL-FRAMED WALL ASSEMBLY



- ACS, ACP SYSTEM-1 WITH 4 mm STACBOND® A2 CORE OR FR CORE ACM
- ACS THERMAL CLIP 2"-10"
- 16GA. 1" X 2" VERTICAL ANGLE
- 2"-10" STONE WOOL INSULATION
- SOPRASEAL STICK 1100T AIR, VAPOUR, AND MOISTURE BARRIER
- EXTERIOR GYPSUM SHEATHING
- STEEL-FRAMING WITH INSULATION IN STUD CAVITY
- INTERIOR GYPSUM BOARD WITH VAPOUR CONTROL

EXTERIOR INSULATED SOFFIT ASSEMBLY



- ACS, ACP SYSTEM-1 WITH 4 mm STACBOND® A2 CORE OR FR CORE ACM
- ACS THERMAL CLIP 2"-10"
- 16GA. 1" X 2" HORIZONTAL ANGLE
- 2"-10" STONE WOOL INSULATION
- CONCRETE SLAB



30-7402 Dulon Road
Reading, PA 19610
(717) 862-0716
info@acscompositesystems.com
www.acscompositesystems.com

STACBOND®

www.stacbond.es

PAGE DESCRIPTION

ACS PANEL SYSTEMS
ACP SYSTEM-1 with 4mm STACBOND A2 CORE or FR CORE ACM

ASSEMBLIES

DWG BY

FG

DATE SUBMITTED

9 MAY 2024

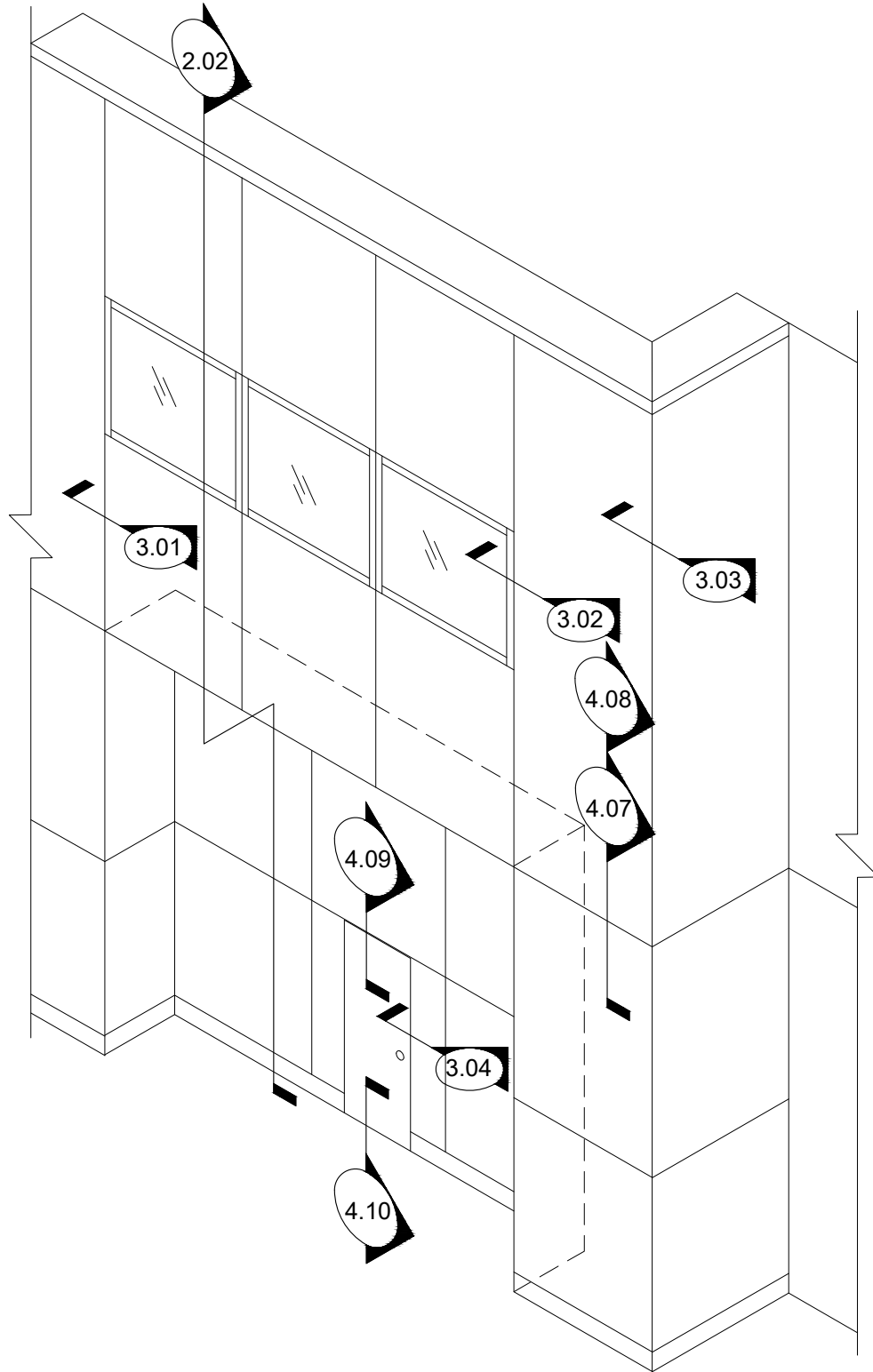
REVISIONS

NO. _____ DATE _____
NO. _____ DATE _____
NO. _____ DATE _____
NO. _____ DATE _____

REVIEWED

NOT TO SCALE

1.02



www.acscompositesystems.com

STAC BOND

www.stacbond.es

PAGE DESCRIPTION

ACS PANEL SYSTEMS
ACP SYSTEM-1 with 4mm STACBOND A2 CORE or FR CORE
ACM

ISOMETRIC ELEVATION

DWG BY

FG

DATE SUBMITTED

9 MAY 2024

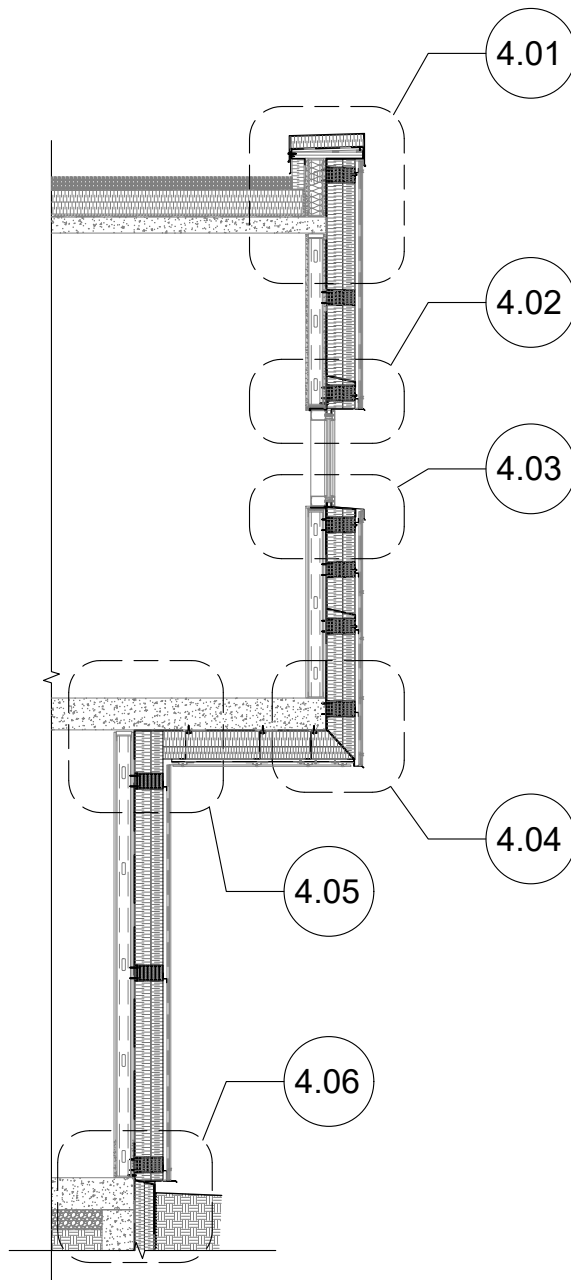
REVISIONS

NO. DATE _____
NO. DATE _____
NO. DATE _____
NO. DATE _____

REVIEWED

NOT TO SCALE

2.01



www.acscompositesystems.com

STAC BOND

www.stacbond.es

PAGE DESCRIPTION

ACS PANEL SYSTEMS
ACP SYSTEM-1 with 4mm STACBOND A2 CORE or FR CORE
ACM

WALL SECTION

DWG BY

FG

DATE SUBMITTED

9 MAY 2024

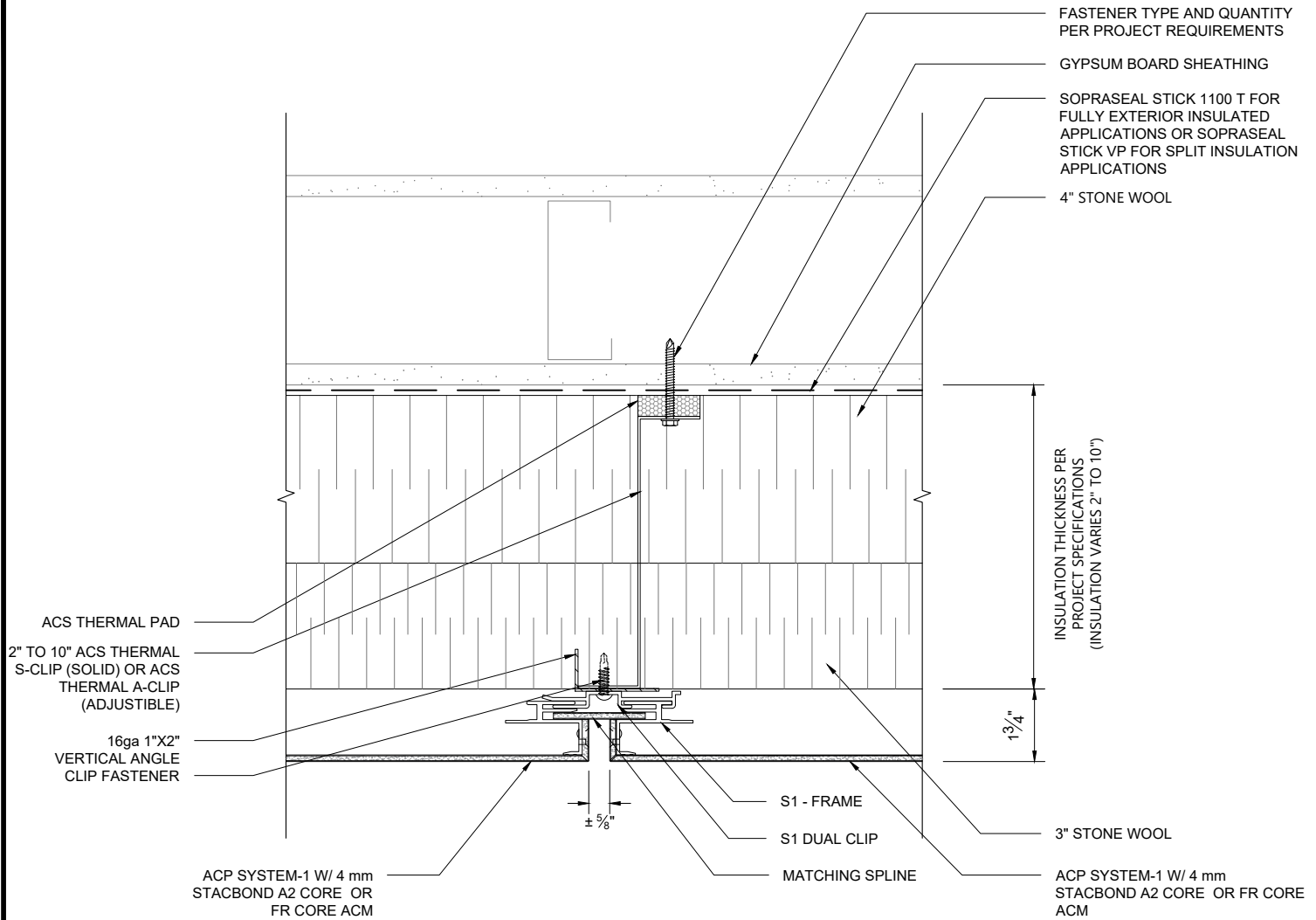
REVIEWED



1/4" = 1'-0"

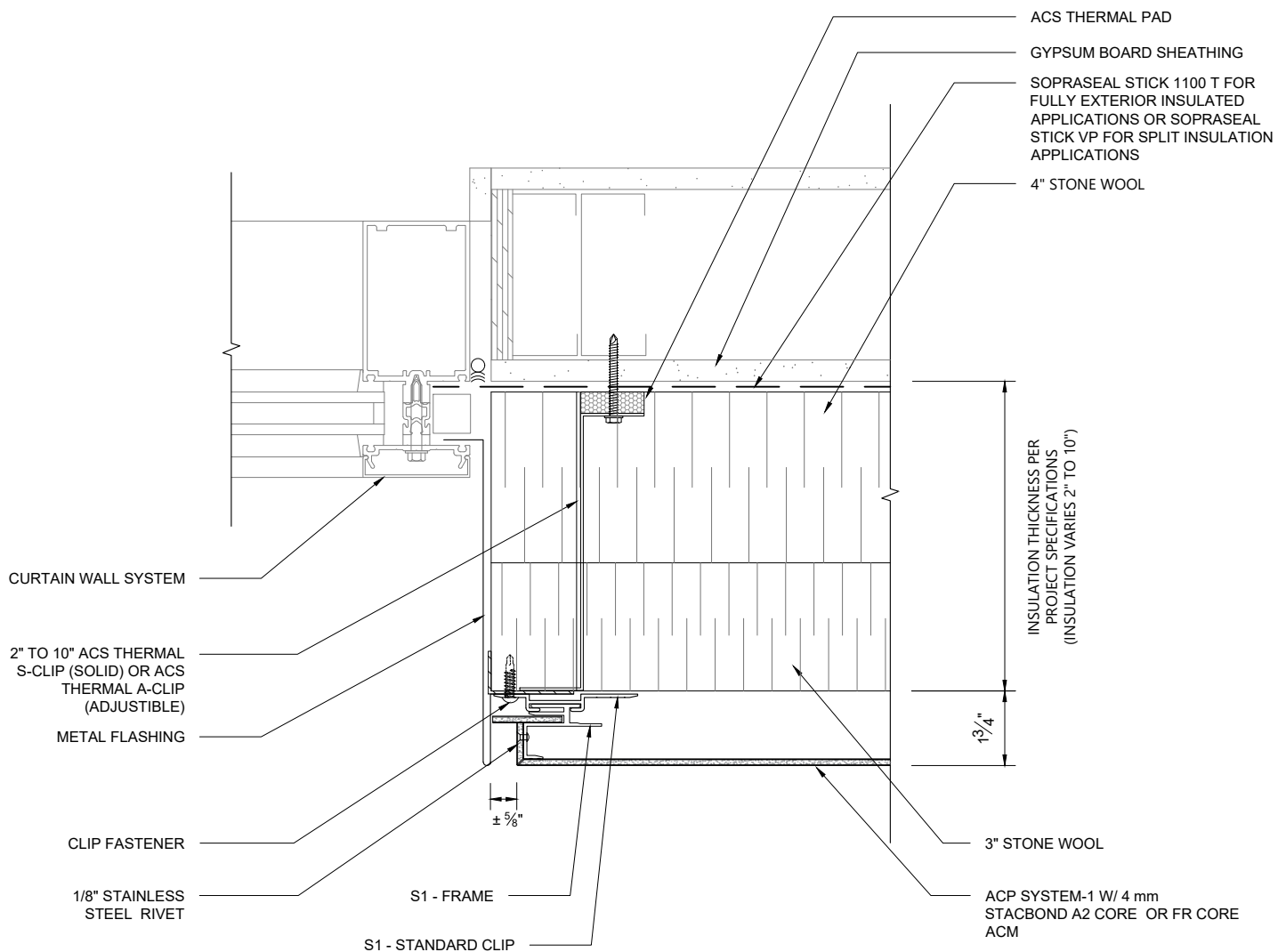
REVISIONS

NO. DATE _____
NO. DATE _____
NO. DATE _____
NO. DATE _____

2.02



 <p>Composite Systems Inc. 30-7402 Dulles Road Herndon, VA 22061 (703) 892-0716 info@acscompositesystems.com www.acscompositesystems.com</p>	 <p>www.stacbond.es</p>	PAGE DESCRIPTION	DWG BY	REVIEWED
		ACS PANEL SYSTEMS ACP SYSTEM-1 with 4mm STACBOND A2 CORE or FR CORE ACM	FG	
		VERTICAL JOINT PLAN DETAIL	DATE SUBMITTED 9 MAY 2024	3" = 1'-0"
		REVISIONS	3.01	
		NO. DATE		
		NO. DATE		
		NO. DATE		
		NO. DATE		



PAGE DESCRIPTION

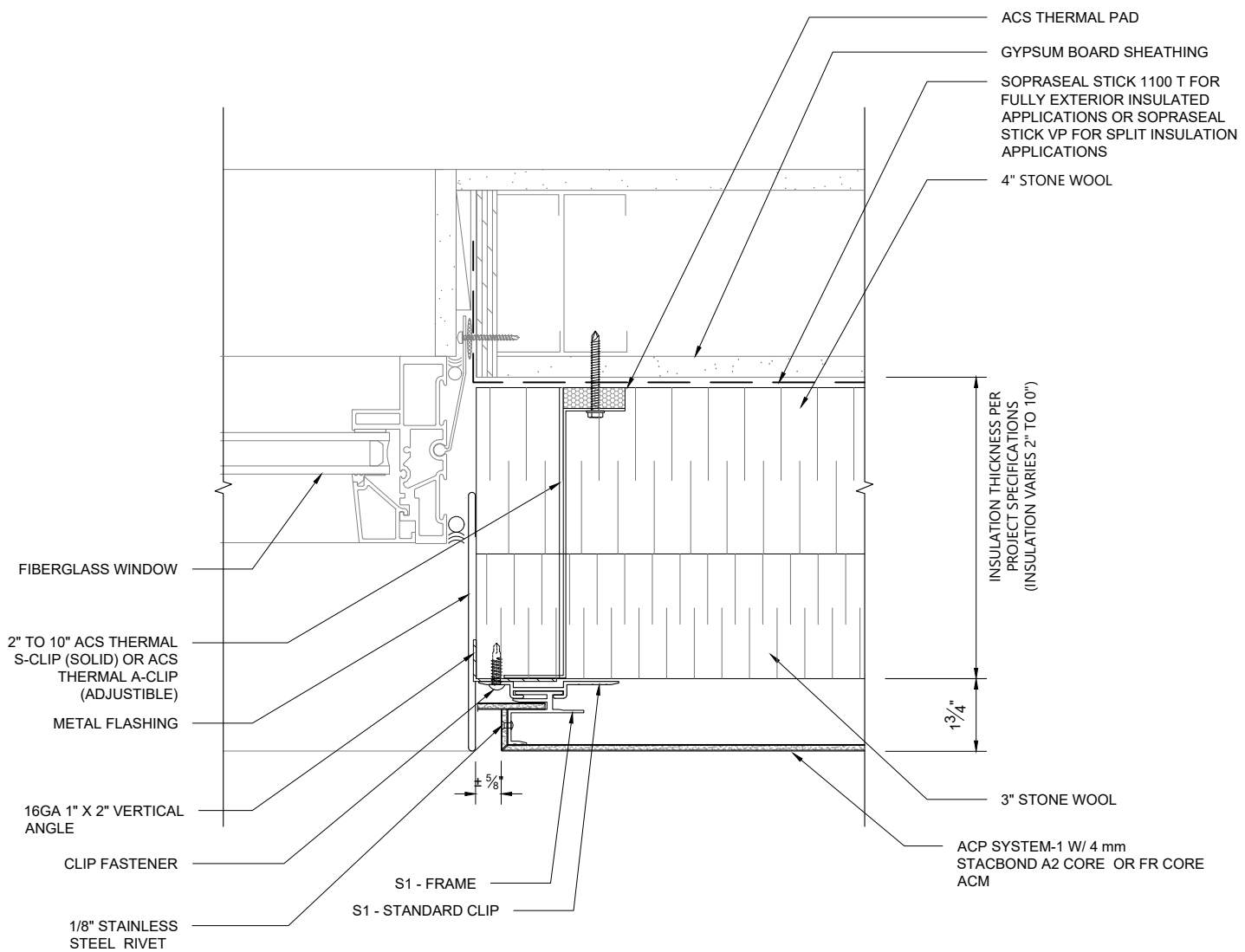
ACS PANEL SYSTEMS
 ACP SYSTEM-1 with 4mm STACBOND A2 CORE or FR CORE
 ACM

**CURTAIN WALL INTERFACE AT JAMB
 PLAN DETAIL**

DWG BY	FG	REVIEWED
DATE SUBMITTED	9 MAY 2024	3" = 1'-0"
REVISIONS		3.02A
NO.	DATE	
NO.	DATE	
NO.	DATE	
NO.	DATE	

30-7402 Butler Road
 Reading, PA 19610
 (717) 802-0716
 info@acscompositesystems.com
 www.acscompositesystems.com

www.stacbond.es



PAGE DESCRIPTION

ACS PANEL SYSTEMS
 ACP SYSTEM-1 with 4mm STACBOND A2 CORE or FR CORE
 ACM

FIBERGLASS WINDOW AT JAMB PLAN
 DETAIL

DWG BY
 FG

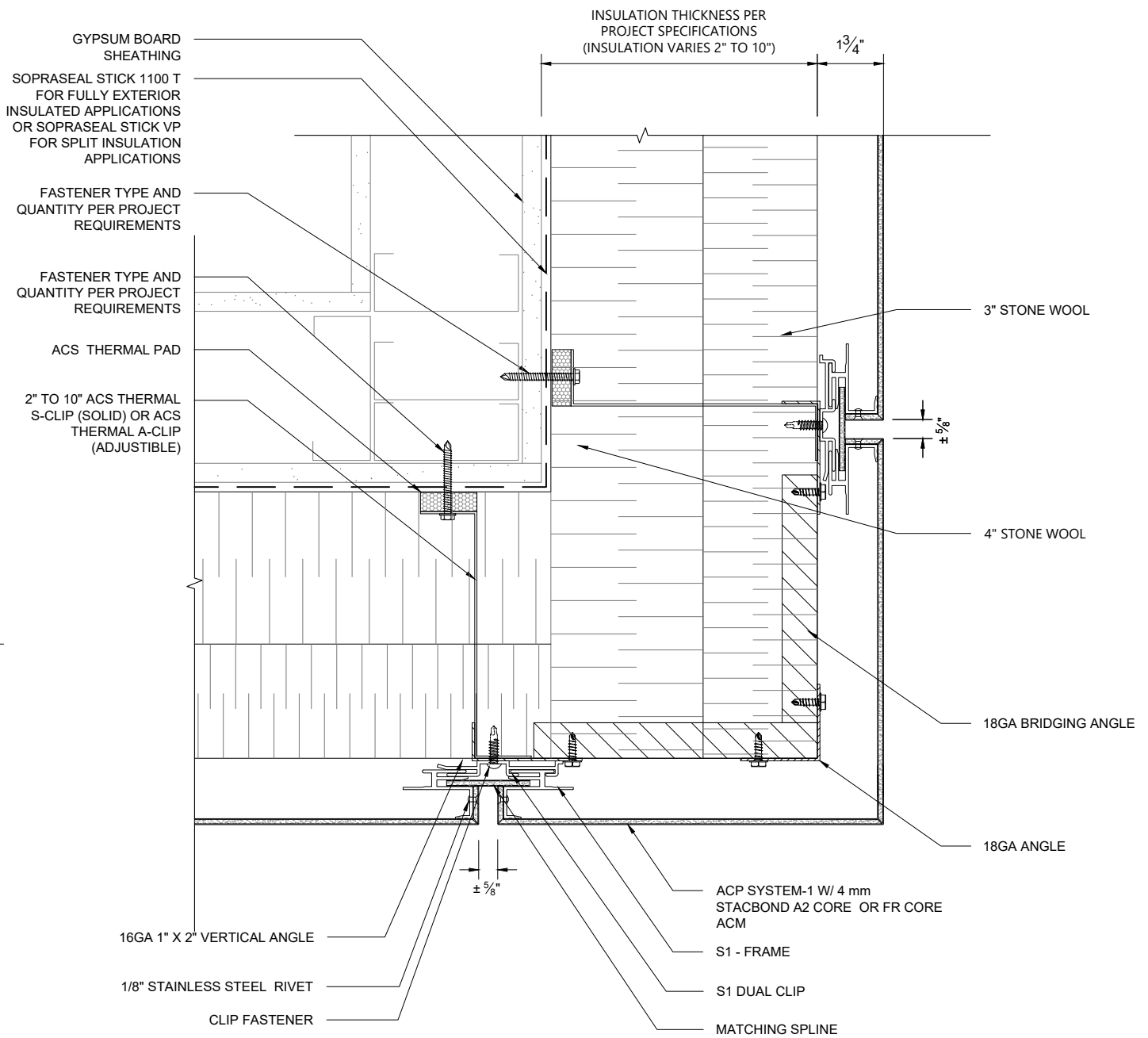
DATE SUBMITTED
 9 MAY 2024



REVISIONS
 NO. DATE _____
 NO. DATE _____
 NO. DATE _____
 NO. DATE _____

REVIEWED

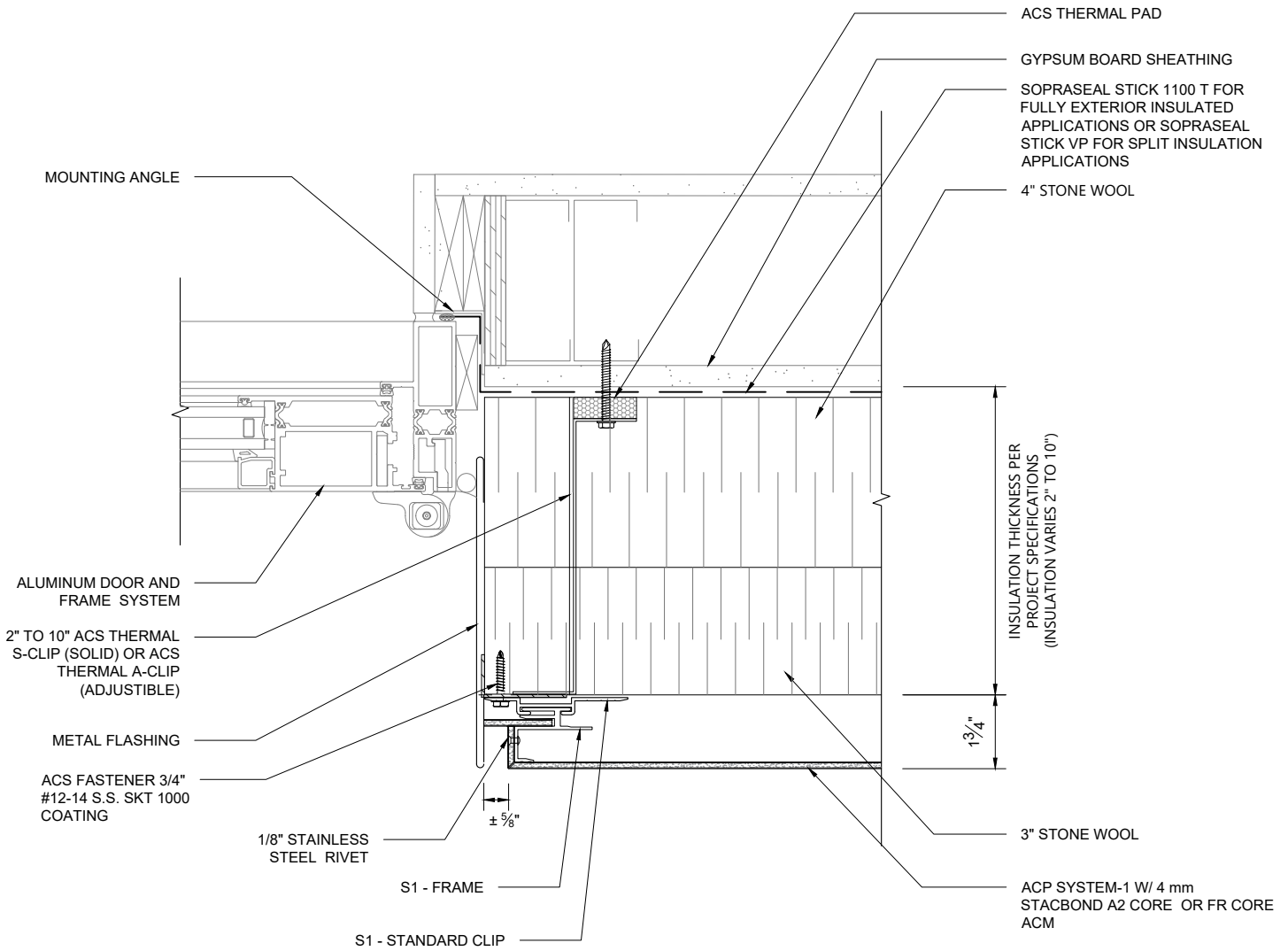
3" = 1'-0"

3.02B



 ACS Composite Systems Inc. <small>30-7402 Dulles Road Herndon, VA 20181 (703) 892-0716 info@acscompositesystems.com</small> www.acscompositesystems.com	 www.stacbond.es	PAGE DESCRIPTION ACS PANEL SYSTEMS ACP SYSTEM-1 with 4mm STACBOND A2 CORE or FR CORE ACM	DWG BY FG	REVIEWED
		DATE SUBMITTED 9 MAY 2024	3" = 1'-0"	
		REVISIONS NO. _____ DATE _____ NO. _____ DATE _____ NO. _____ DATE _____ NO. _____ DATE _____	3.03	

OUTSIDE CORNER PLAN DETAIL



30-7402 Butler Road
 Bowling, NC 28011
 (773) 802-0716
 info@acscompositesystems.com
 www.acscompositesystems.com



www.stacbond.es

PAGE DESCRIPTION

ACS PANEL SYSTEMS
 ACP SYSTEM-1 with 4mm STACBOND A2 CORE or FR CORE
 ACM

ALUMINUM DOOR AT JAMB PLAN DETAIL

DWG BY

FG

DATE SUBMITTED

9 MAY 2024

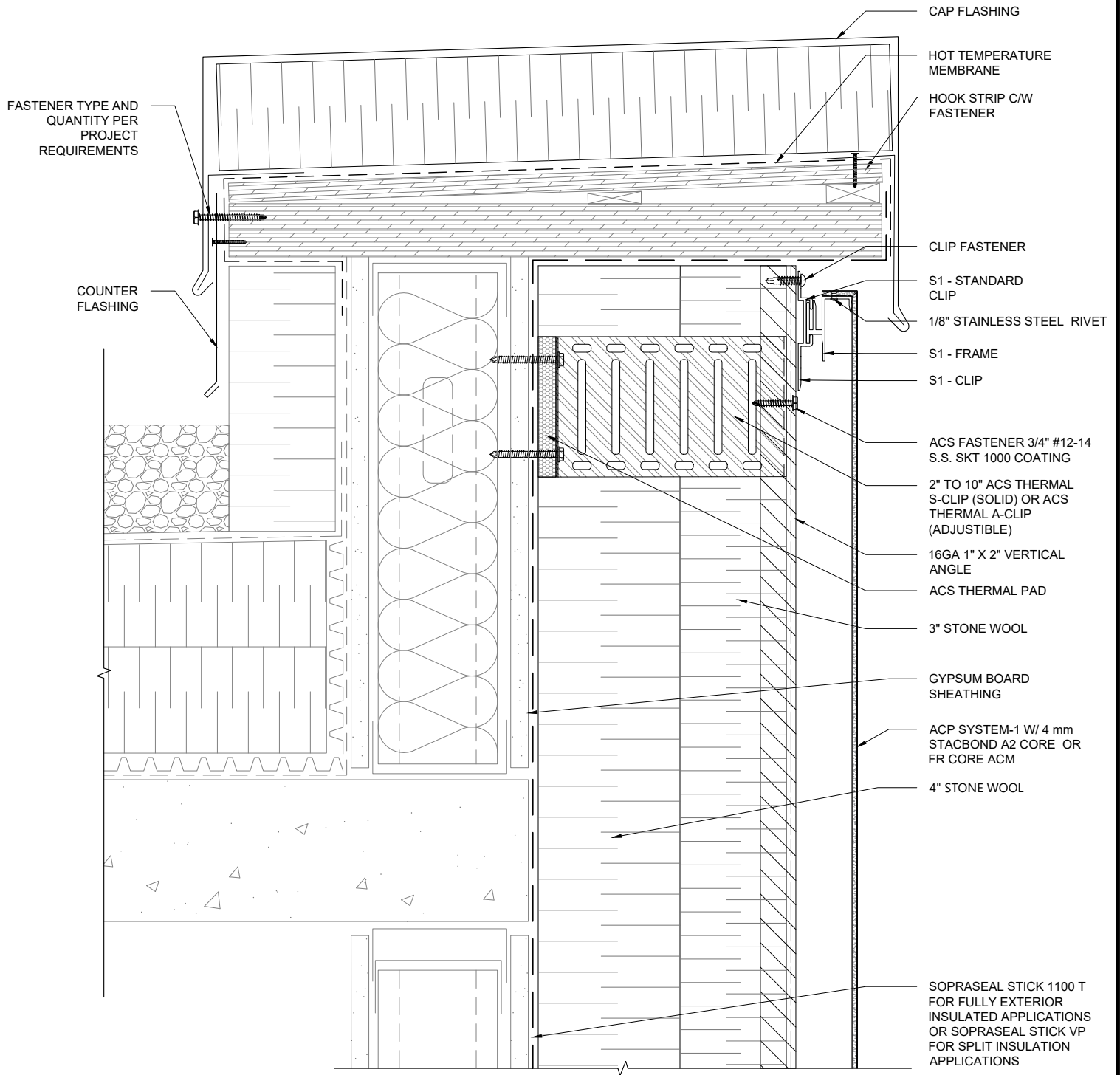
REVISIONS

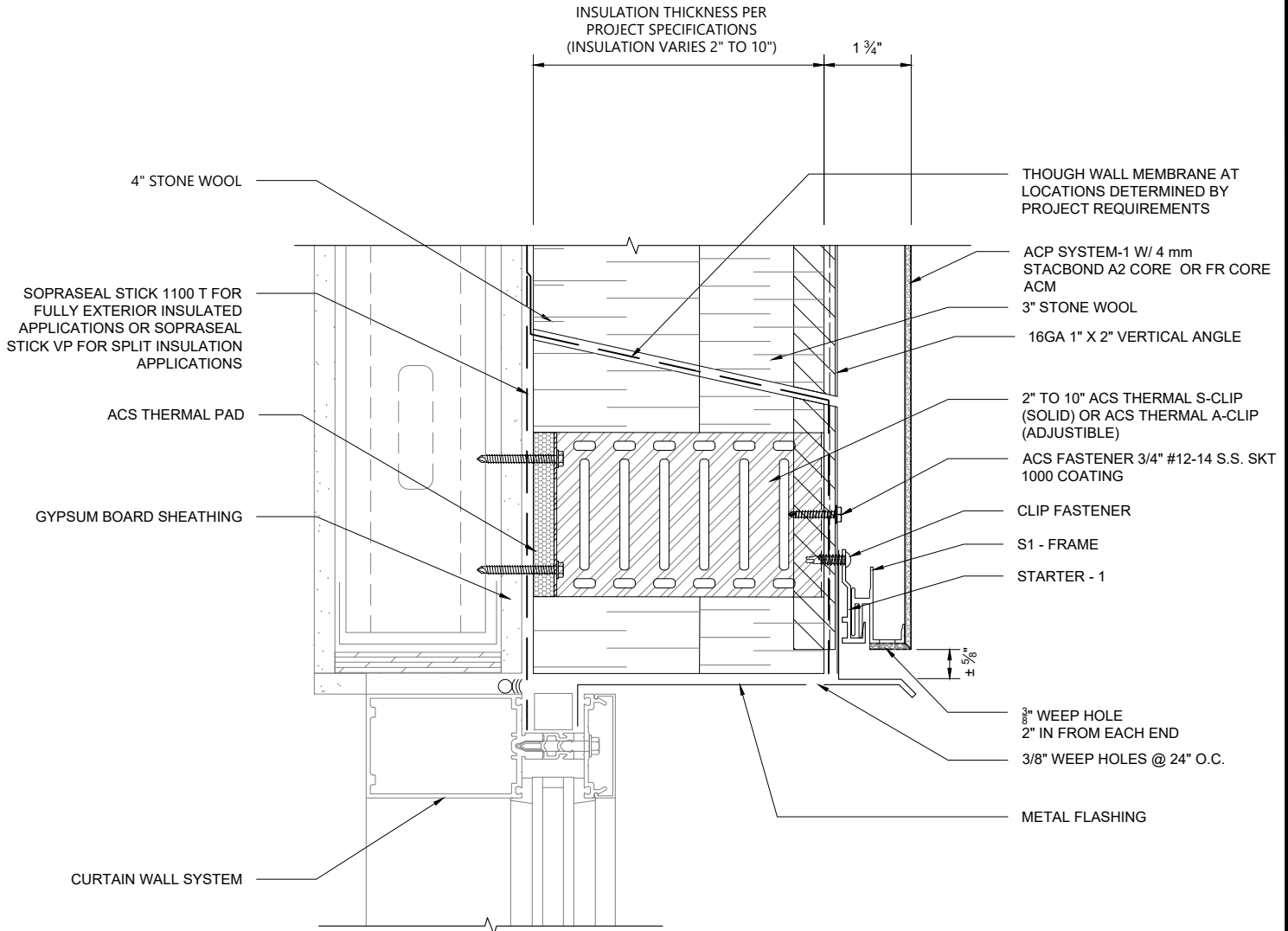
NO. DATE _____
 NO. DATE _____
 NO. DATE _____
 NO. DATE _____

REVIEWED

3" = 1'-0"

3.04





PAGE DESCRIPTION

ACS PANEL SYSTEMS
ACP SYSTEM-1 with 4mm STACBOND A2 CORE or FR CORE ACM

CURTAIN WALL INTERFACE AT HEAD SECTION DETAIL

DWG BY

FG

DATE SUBMITTED

9 MAY 2024

REVIEWED

3" = 1'-0"

REVISIONS

NO. DATE _____
NO. DATE _____
NO. DATE _____
NO. DATE _____

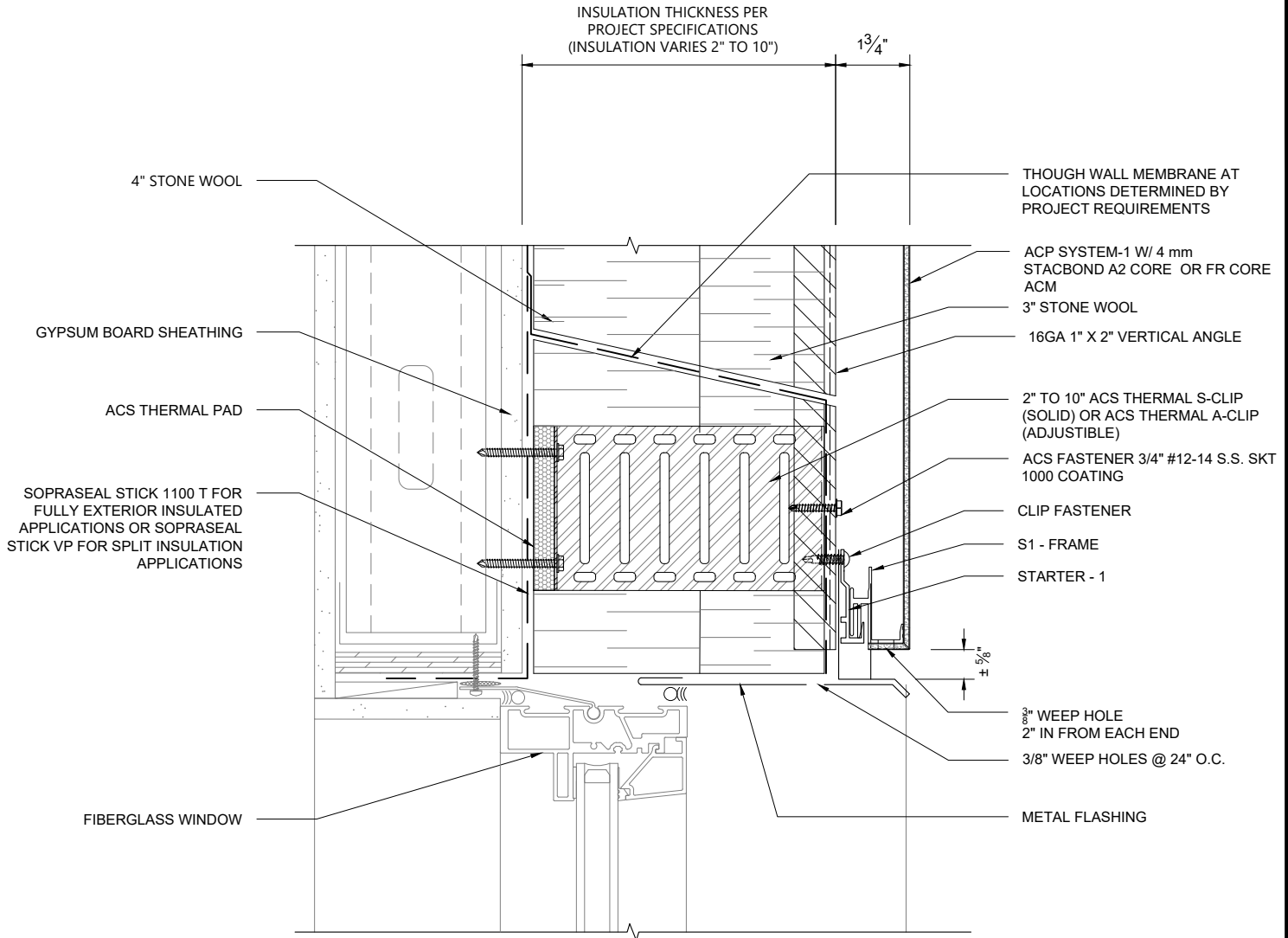
4.02A



30-7402 Butler Road
Basking, NJ 07001
(778) 802-0716
info@acscpositesystems.com
www.acscpositesystems.com



www.stacbond.es



PAGE DESCRIPTION

ACS PANEL SYSTEMS
ACP SYSTEM-1 with 4mm STACBOND A2 CORE or FR CORE ACM

DWG BY

FG

REVIEWED

DATE SUBMITTED

9 MAY 2024

3" = 1'-0"

REVISIONS

NO. DATE _____
NO. DATE _____
NO. DATE _____
NO. DATE _____

FIBERGLASS WINDOW AT
HEAD SECTION DETAIL

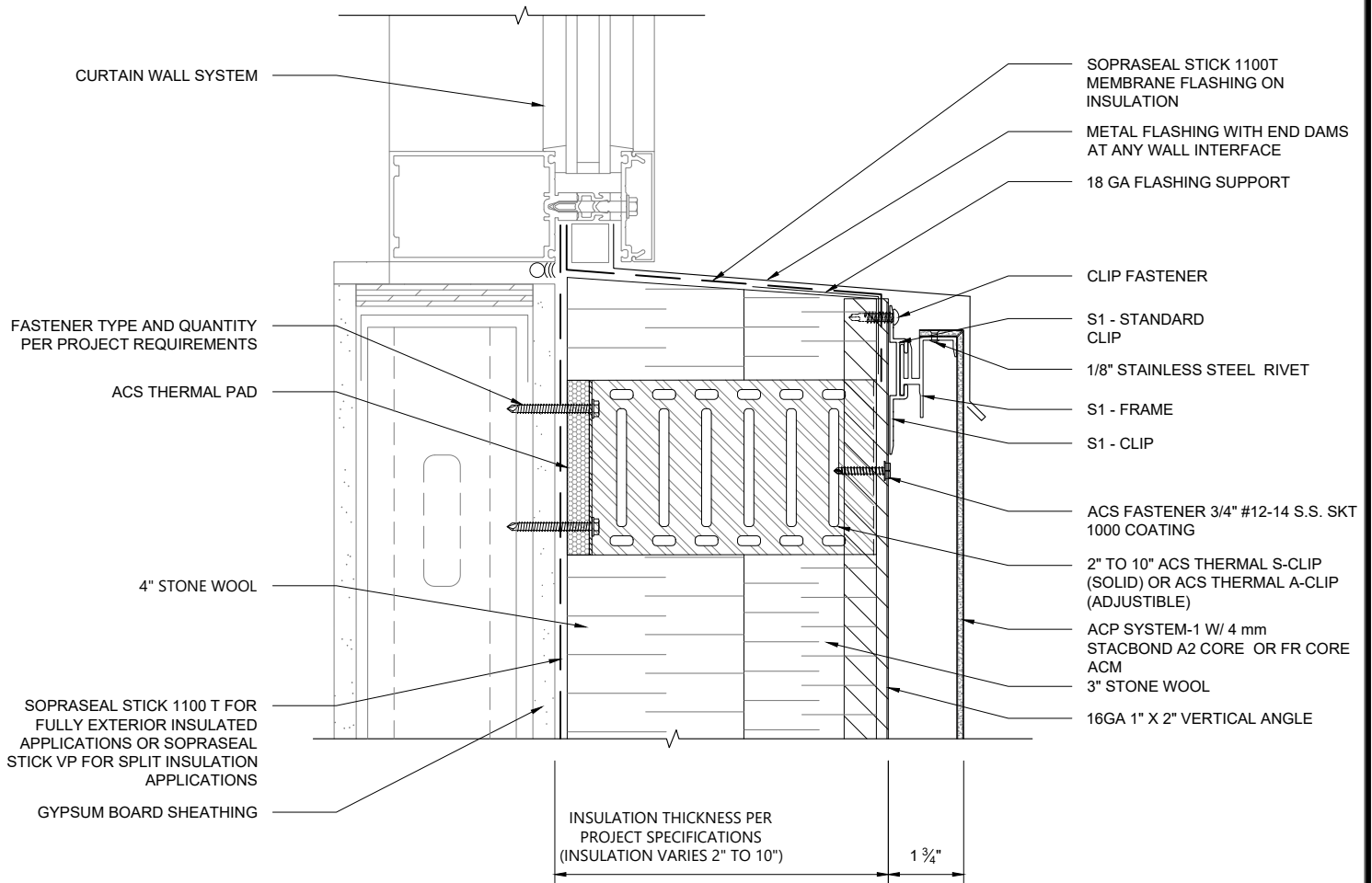
4.02B



30-7402 Butler Road
Basking, NJ 07001
(773) 802-0716
info@acscompositesystems.com
www.acscompositesystems.com



www.stacbond.es



PAGE DESCRIPTION

ACS PANEL SYSTEMS
ACP SYSTEM-1 with 4mm STACBOND A2 CORE or FR CORE ACM

CURTAIN WALL INTERFACE AT SILL
SECTION DETAIL

DWG BY

FG

DATE SUBMITTED

9 MAY 2024

REVIEWED

3" = 1'-0"

REVISIONS

NO. _____ DATE _____
NO. _____ DATE _____
NO. _____ DATE _____
NO. _____ DATE _____

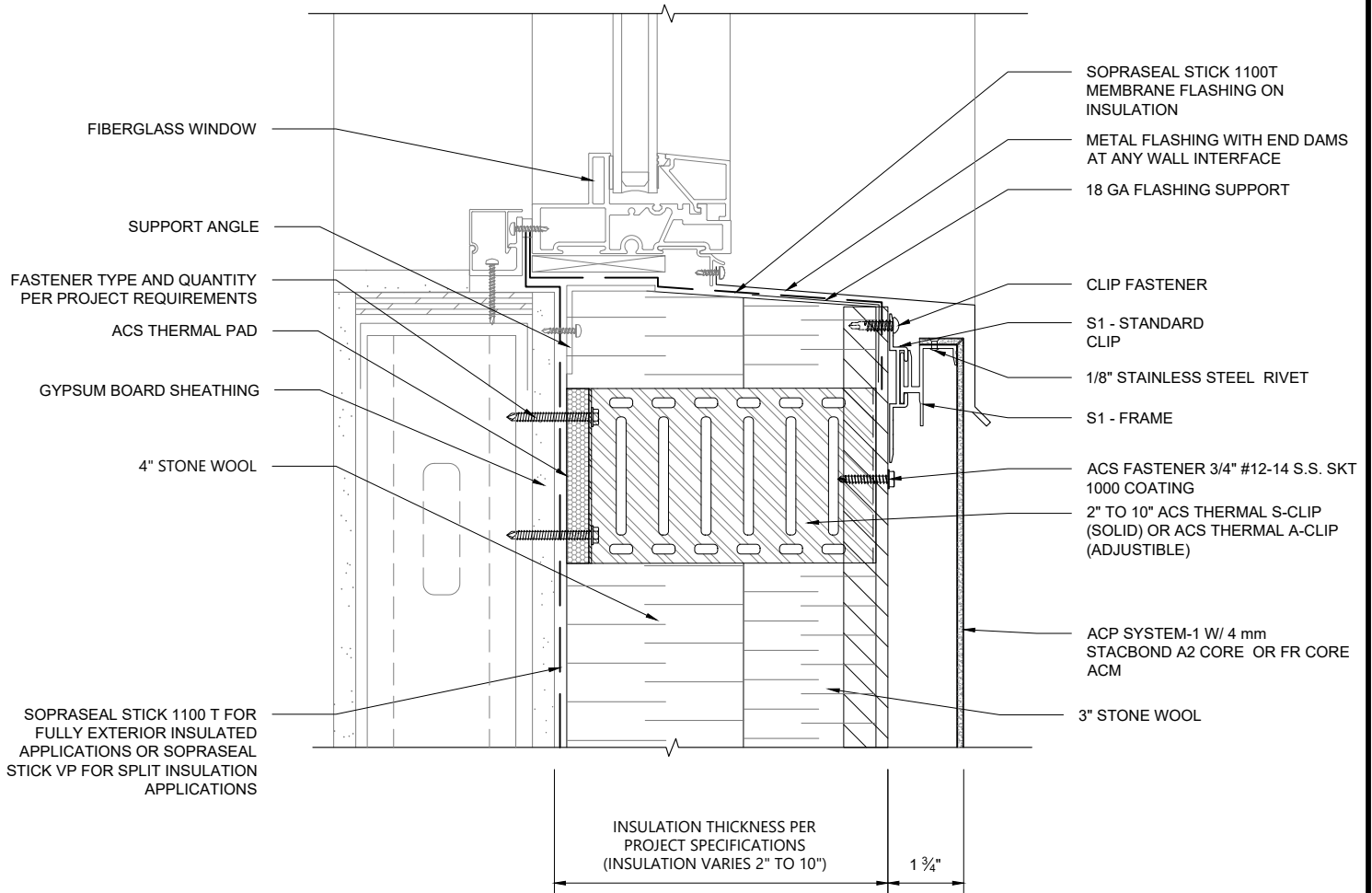
4.03A

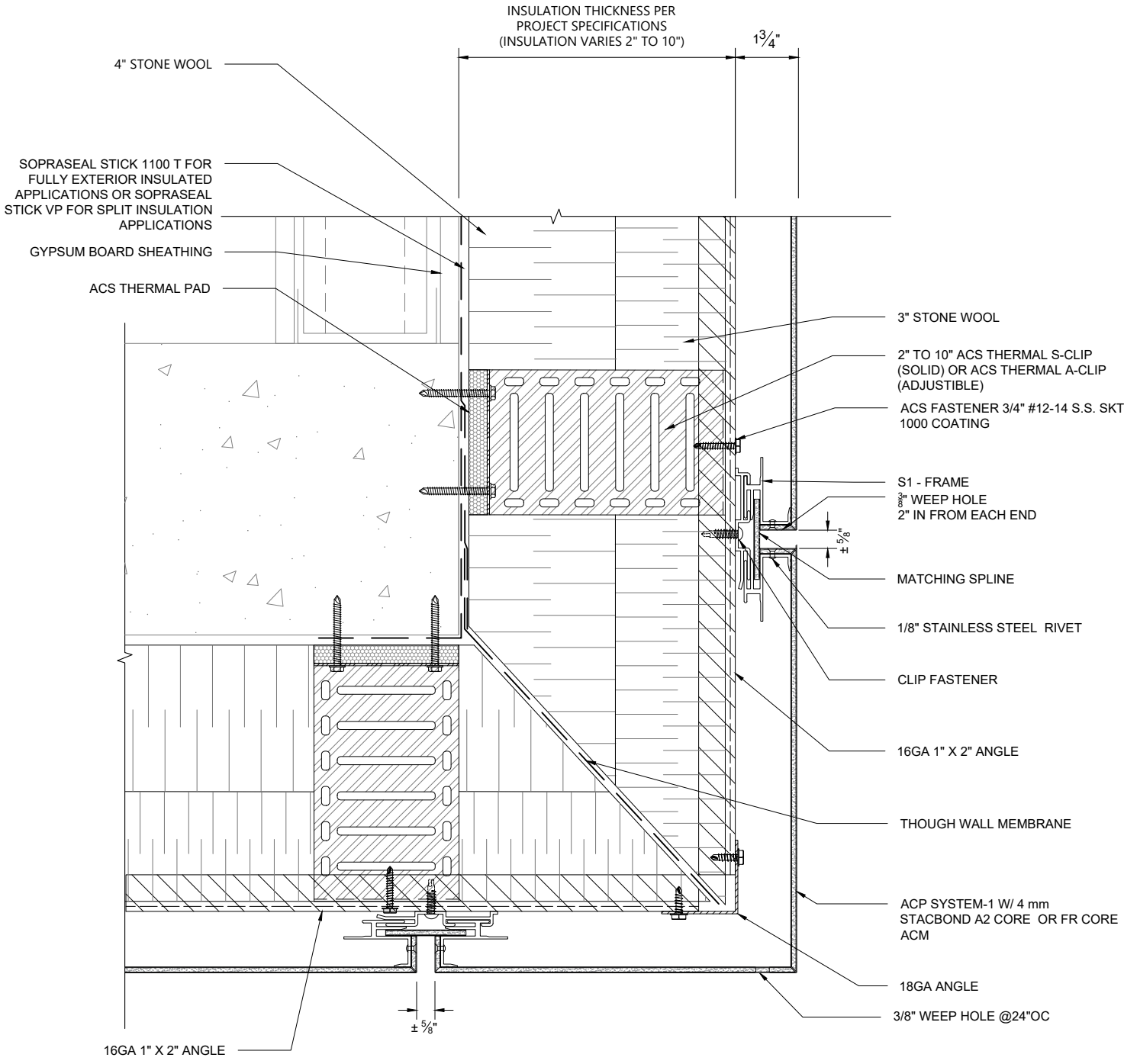


STAC BOND

www.acscompositesystems.com

www.stacbond.es

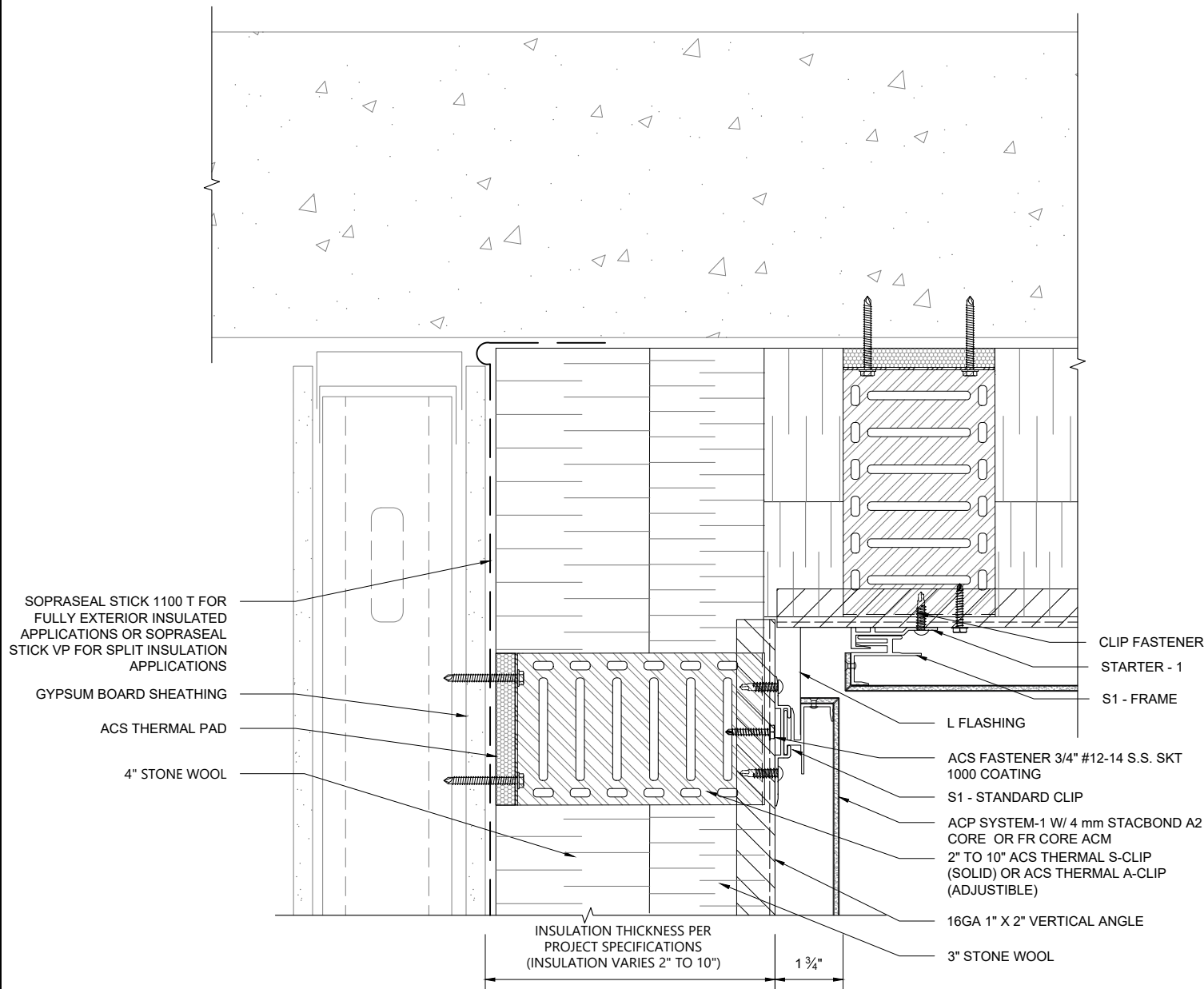




PAGE DESCRIPTION
ACS PANEL SYSTEMS
 ACP SYSTEM-1 with 4mm STACBOND A2 CORE or FR CORE ACM
SOFFIT SECTION DETAIL

DWG BY: FG
 DATE SUBMITTED: 9 MAY 2024
 REVISIONS:
 NO. DATE _____
 NO. DATE _____
 NO. DATE _____
 NO. DATE _____

REVIEWED: 3" = 1'-0"
4.04



SOPRASEAL STICK 1100 T FOR FULLY EXTERIOR INSULATED APPLICATIONS OR SOPRASEAL STICK VP FOR SPLIT INSULATION APPLICATIONS

GYPSUM BOARD SHEATHING

ACS THERMAL PAD

4\"/>

CLIP FASTENER
STARTER - 1
S1 - FRAME

L FLASHING

ACS FASTENER 3/4\"/>

S1 - STANDARD CLIP

ACP SYSTEM-1 W/ 4 mm STACBOND A2 CORE OR FR CORE ACM

2\"/>

16GA 1\"/>

3\"/>

INSULATION THICKNESS PER PROJECT SPECIFICATIONS (INSULATION VARIES 2\"/>

1 3/4\"/>

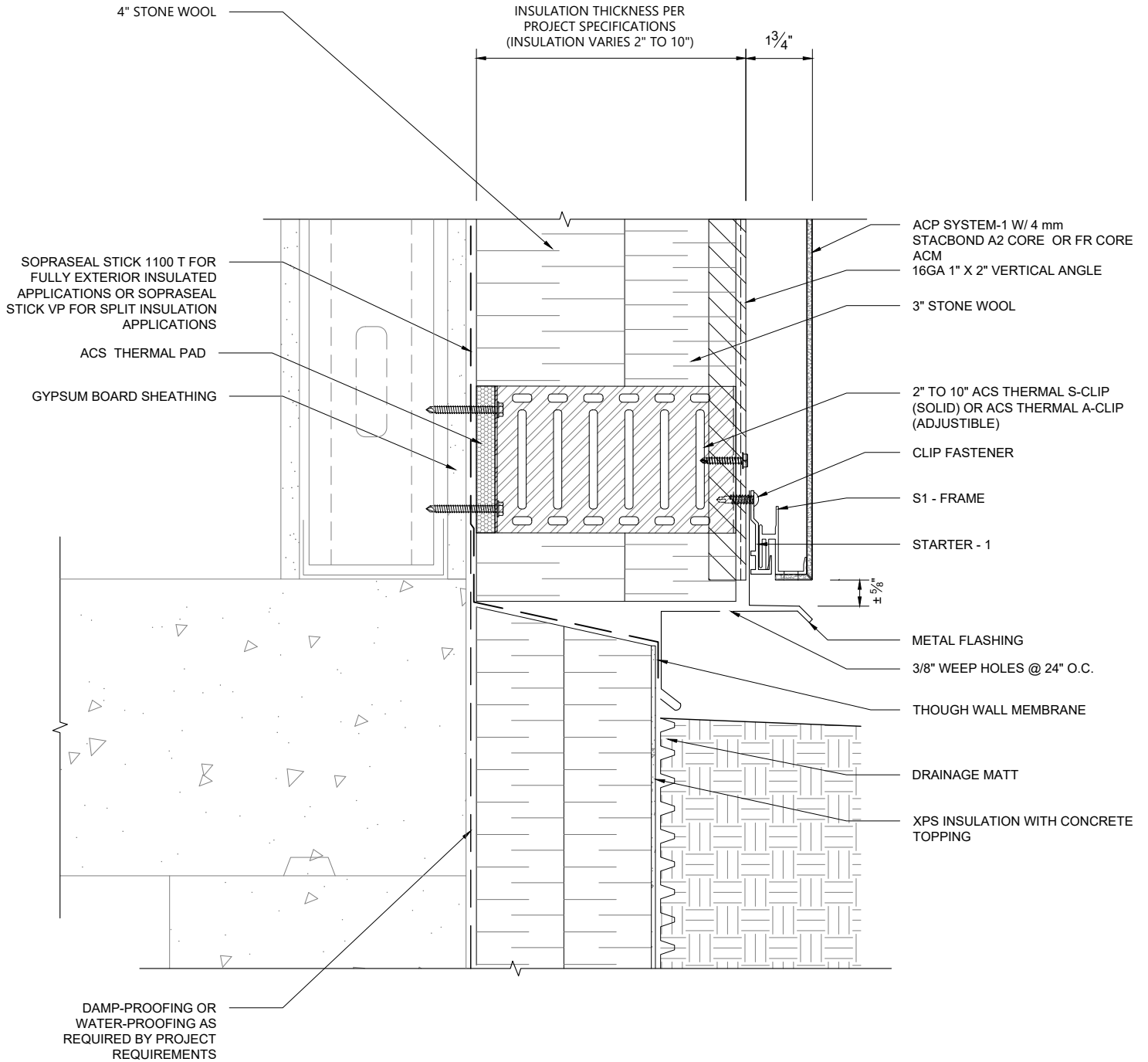


PAGE DESCRIPTION
ACS PANEL SYSTEMS
ACP SYSTEM-1 with 4mm STACBOND A2 CORE or FR CORE ACM
SOFFIT AT WALL SECTION DETAIL

DWG BY FG
DATE SUBMITTED 9 MAY 2024
REVISIONS
NO. DATE
NO. DATE
NO. DATE
NO. DATE

REVIEWED
3\"/>

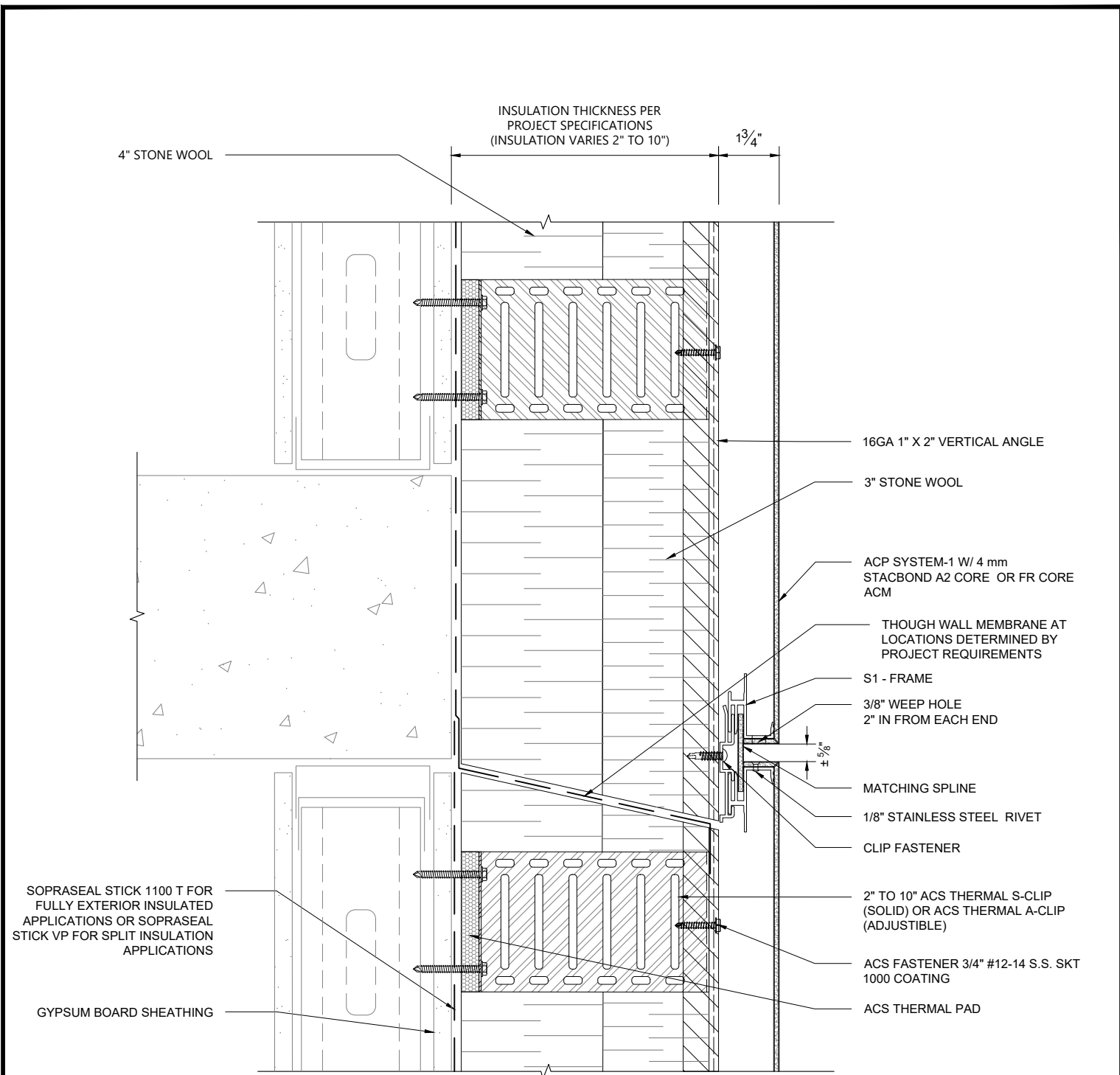
4.05



PAGE DESCRIPTION
 ACS PANEL SYSTEMS
 ACP SYSTEM-1 with 4mm STACBOND A2 CORE or FR CORE ACM
BASE OF WALL AT FOUNDATION SECTION DETAIL

DWG BY
 FG
 DATE SUBMITTED
 9 MAY 2024
 REVISIONS
 NO. DATE
 NO. DATE
 NO. DATE
 NO. DATE

REVIEWED
 3" = 1'-0"
4.06



SOPRASEAL STICK 1100 T FOR FULLY EXTERIOR INSULATED APPLICATIONS OR SOPRASEAL STICK VP FOR SPLIT INSULATION APPLICATIONS

GYPSUM BOARD SHEATHING

INSULATION THICKNESS PER PROJECT SPECIFICATIONS (INSULATION VARIES 2" TO 10")

1 3/4"

- 16GA 1" X 2" VERTICAL ANGLE
- 3" STONE WOOL
- ACP SYSTEM-1 W/ 4mm STACBOND A2 CORE OR FR CORE ACM
- TOUGH WALL MEMBRANE AT LOCATIONS DETERMINED BY PROJECT REQUIREMENTS
- S1 - FRAME
- 3/8" WEEP HOLE 2" IN FROM EACH END
- ± 5/8"
- MATCHING SPLINE
- 1/8" STAINLESS STEEL RIVET
- CLIP FASTENER
- 2" TO 10" ACS THERMAL S-CLIP (SOLID) OR ACS THERMAL A-CLIP (ADJUSTIBLE)
- ACS FASTENER 3/4" #12-14 S.S. SKT 1000 COATING
- ACS THERMAL PAD

30-7402 Dulles Road
Bedford, NC 28609
(773) 862-0716
info@acscompositesystems.com
www.acscompositesystems.com

www.stacbond.es

PAGE DESCRIPTION
ACS PANEL SYSTEMS
 ACP SYSTEM-1 with 4mm STACBOND A2 CORE or FR CORE ACM
INTERMEDIATE FLOOR SECTION DETAIL

DWG BY
 FG
 DATE SUBMITTED
 9 MAY 2024
 REVISIONS
 NO. DATE
 NO. DATE
 NO. DATE
 NO. DATE

REVIEWED
 3" = 1'-0"
4.07

INSULATION THICKNESS PER PROJECT SPECIFICATIONS (INSULATION VARIES 2" TO 10")

1 3/4"

4" STONE WOOL

2" TO 10" ACS THERMAL S-CLIP (SOLID) OR ACS THERMAL A-CLIP (ADJUSTIBLE)

ACS FASTENER 3/4" #12-14 S.S. SKT 1000 COATING

16GA 1" X 2" VERTICAL ANGLE

3" STONE WOOL

ACP SYSTEM-1 W/ 4 mm STACBOND A2 CORE OR FR CORE ACM

THOUGH WALL MEMBRANE AT LOCATIONS DETERMINED BY PROJECT REQUIREMENTS

CLIP FASTENER

S1 - FRAME

STARTER - 1

3/8" WEEP HOLE 2" IN FROM EACH END

METAL FLASHING

1/8" STAINLESS STEEL RIVET

S1 - STANDARD CLIP

S1 - FRAME

S1 - CLIP

GYPSUM BOARD SHEATHING

ACS THERMAL PAD

SOPRASEAL STICK 1100 T FOR FULLY EXTERIOR INSULATED APPLICATIONS OR SOPRASEAL STICK VP FOR SPLIT INSULATION APPLICATIONS

PAGE DESCRIPTION

ACS PANEL SYSTEMS
ACP SYSTEM-1 with 4mm STACBOND A2 CORE or FR CORE ACM

DWG BY

FG

REVIEWED

DATE SUBMITTED

9 MAY 2024

3" = 1'-0"

REVISIONS

NO. DATE _____
NO. DATE _____
NO. DATE _____
NO. DATE _____

INTERMEDIATE FLOOR WITH THROUGH-WALL FLASHING SECTION DETAIL OPTIONAL

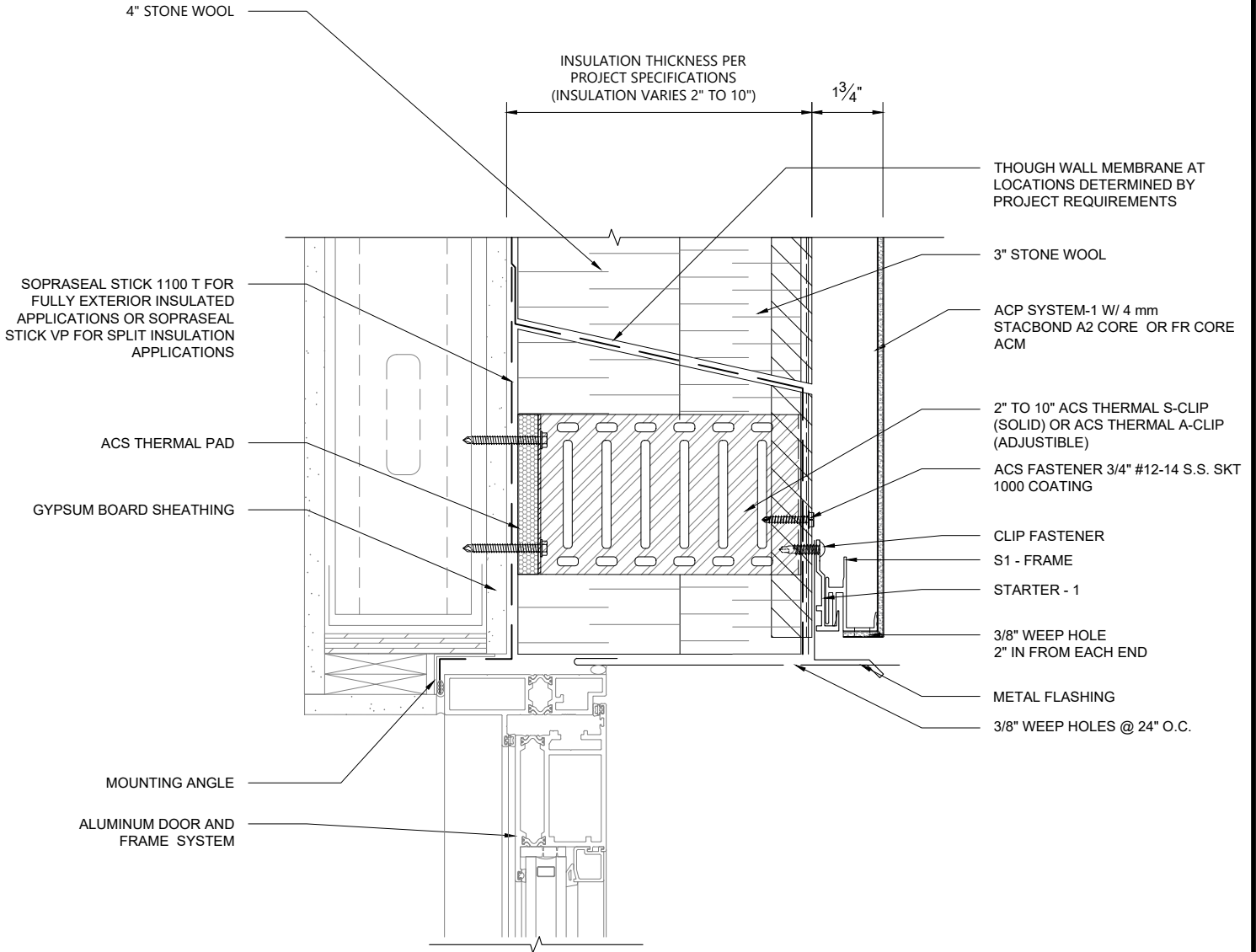
4.08



30-7402 Butler Road
Reading, PA 19610
(717) 862-0116
info@acscompositesystems.com
www.acscompositesystems.com



www.stacbond.es



PAGE DESCRIPTION

ACS PANEL SYSTEMS
ACP SYSTEM-1 with 4mm STACBOND A2 CORE or FR CORE ACM

ALUMINUM DOOR AT HEAD SECTION
DETAIL

DWG BY

FG

DATE SUBMITTED

9 MAY 2024

REVIEWED

3" = 1'-0"

REVISIONS

NO. DATE _____
NO. DATE _____
NO. DATE _____
NO. DATE _____

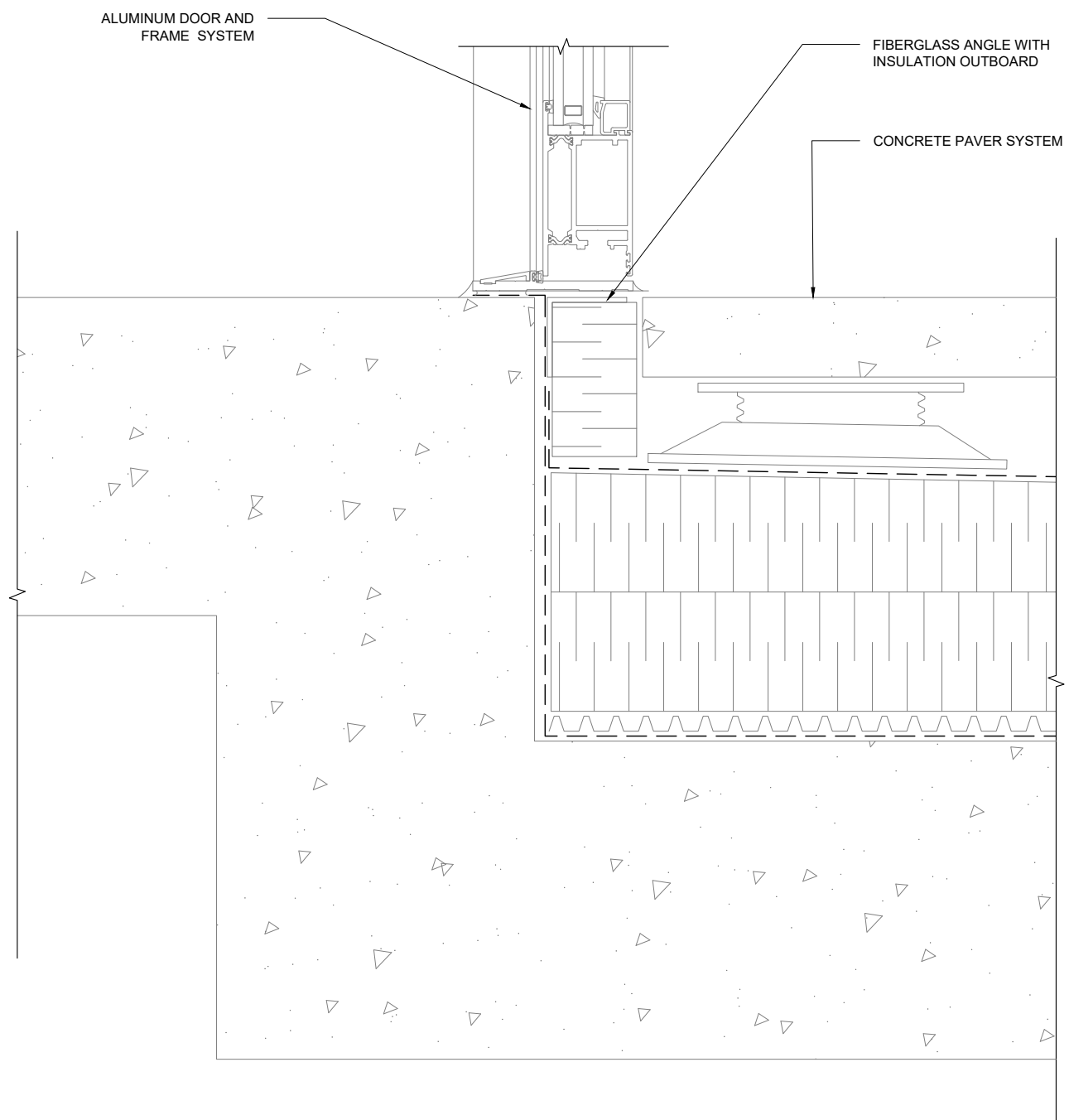
4.09



30-7402 Butler Road
Reading, PA 19610
(717) 862-8716
info@acscompositesystems.com
www.acscompositesystems.com



www.stacbond.es



PAGE DESCRIPTION

ACS PANEL SYSTEMS
 ACP SYSTEM-1 with 4mm STACBOND A2 CORE or FR CORE
 ACM

ALUMINUM DOOR AT SILL SECTION
 DETAIL

DWG BY
 FG

DATE SUBMITTED
 9 MAY 2024

REVISIONS
 NO. DATE _____
 NO. DATE _____
 NO. DATE _____
 NO. DATE _____

REVIEWED

3" = 1'-0"

4.10

